



**Council - Corporate Priorities Committee Meeting
Agenda**

Tuesday, March 17, 2020

6:00 p.m.

Council Chambers

Pages

1. CALL TO ORDER
2. ADOPTION OF AGENDA
3. DISCLOSURE OF INTEREST
4. PUBLIC QUESTION PERIOD
5. OLD BUSINESS
6. NEW BUSINESS
 - 6.1 Alberta School Foundation Fund 2020 Requisition (ASFF) 2 - 12
 - 6.2 City of Cold Lake Crime Open House 13 - 63
 - 6.3 Cold Lake Regional Utility Services Commission (CLRUSC) Waste Water Treatment Plant - Moving Bed Biofilm Reactor (MBBR) Pilot Project 64 - 81
 - 6.4 Cityworks - Work Order and Asset Management System 82
7. QUESTIONS
8. IN CAMERA
 - 8.1 Cold Lake Regional Utility Services Commission (CLRUSC) Regional Water Rate Study
9. ADJOURNMENT



STAFF REPORT

Title: Alberta School Foundation Fund 2020 Requisition (ASFF)

Meeting Date: March 17, 2020

Executive Summary:

The City has been provided a preliminary 2020 Education Property Tax Requisition. Handout to be given at Corporate Priorities Committee meeting on March 17, 2020 on how the requisition will impact the rate payers of the City of Cold Lake.

Background:

Alternatives:

Recommended Action:

For information only.

Budget Implications (Yes or No):

No

Submitted by:

Kevin Nagoya, Chief Administrative Officer

PRELIMINARY

2020 EDUCATION PROPERTY TAX REQUISITION

FOR

CITY OF COLD LAKE

PAYMENT TO ALBERTA SCHOOL FOUNDATION FUND (ASFF)

Assessment Class	Basic Rate (1)	Equalized Assessment (2)	ASFF Requisition (1) x (2) / 1,000
Residential and Farmland	\$ 2.64	\$ 1,408,928,338	\$ 3,719,570.81
Non-Residential	\$ 3.88	\$ 557,424,774	\$ 2,162,808.12
Machinery & Equipment	\$ 0.00	\$ 556,690	\$ 0.00
Total			\$ 5,882,378.94

PAYMENT TO LAKELAND RCSSD

Assessment Class	Basic Rate (1)	Equalized Assessment (2)	Opted Out Requisition (1) x (2) / 1,000
Residential and Farmland	\$ 2.64	\$ 243,698,198	\$ 643,363.24
Non-Residential	\$ 3.88	\$ 45,245,824	\$ 175,553.80
Machinery & Equipment	\$ 0.00	\$ 0	\$ 0.00
Total			\$ 818,917.04

Total 2020 Property Taxes for Education: \$ 6,701,295.98

Report created on Mar 09, 2020.

2020 Education Property Tax Requisition Comparison Report

Municipality City	Residential / Farm Land Requisition			Non-Residential Requisition			Total Education Requisition		
	2019	2020	% Change	2019	2020	% Change	2019	2020	% Change
City of Airdrie	\$24,048,777	\$25,804,786	7%	\$6,458,466	\$6,756,736	5%	\$30,507,243	\$32,561,523	7%
City of Beaumont	\$6,947,900	\$7,388,378	6%	\$717,485	\$813,346	13%	\$7,665,385	\$8,201,724	7%
City of Brooks	\$2,715,581	\$2,796,540	3%	\$1,265,995	\$1,304,093	3%	\$3,981,576	\$4,100,634	3%
City of Calgary	\$551,655,967	\$571,837,301	4%	\$244,035,996	\$227,261,042	-7%	\$795,691,963	\$799,098,343	0%
City of Camrose	\$5,485,094	\$5,637,970	3%	\$2,307,381	\$2,410,510	4%	\$7,792,475	\$8,048,479	3%
City of Chestermere	\$8,904,174	\$9,289,410	4%	\$648,468	\$785,545	21%	\$9,552,643	\$10,074,955	5%
City of Cold Lake	\$4,576,871	\$4,362,934	-5%	\$2,252,027	\$2,338,362	4%	\$6,828,899	\$6,701,296	-2%
City of Edmonton	\$330,194,132	\$347,226,600	5%	\$158,341,739	\$166,269,811	5%	\$488,535,871	\$513,496,411	5%
City of Fort Saskatchewan	\$9,138,860	\$9,564,463	5%	\$4,758,586	\$4,925,488	4%	\$13,897,446	\$14,489,951	4%
City of Grande Prairie	\$17,200,355	\$18,232,723	6%	\$11,457,995	\$12,234,097	7%	\$28,658,350	\$30,466,820	6%
City of Lacombe	\$3,963,060	\$3,996,866	1%	\$1,183,809	\$1,211,205	2%	\$5,146,869	\$5,208,071	1%
City of Leduc	\$10,235,715	\$10,661,599	4%	\$7,804,360	\$8,248,429	6%	\$18,040,074	\$18,910,029	5%
City of Lethbridge	\$26,715,992	\$28,221,407	6%	\$10,125,253	\$10,737,538	6%	\$36,841,245	\$38,958,945	6%
City of Lloydminster	\$5,793,924	\$5,801,525	0%	\$3,560,735	\$3,678,809	3%	\$9,354,659	\$9,480,334	1%
City of Medicine Hat	\$17,485,706	\$18,603,470	6%	\$5,949,475	\$6,715,551	13%	\$23,435,180	\$25,319,021	8%
City of Red Deer	\$30,564,547	\$30,745,869	1%	\$14,604,129	\$15,447,223	6%	\$45,168,676	\$46,193,092	2%
City of Spruce Grove	\$12,409,502	\$12,983,659	5%	\$3,927,389	\$4,205,415	7%	\$16,336,891	\$17,189,074	5%
City of St. Albert	\$27,131,006	\$28,110,943	4%	\$6,496,729	\$7,497,926	15%	\$33,627,735	\$35,608,868	6%
City of Wetaskiwin	\$2,730,897	\$2,746,175	1%	\$1,247,819	\$1,327,149	6%	\$3,978,716	\$4,073,324	2%
Specialized Municipality									
Lac La Biche County	\$3,168,046	\$3,250,536	3%	\$6,582,149	\$6,847,358	4%	\$9,750,195	\$10,097,894	4%
Mackenzie County	\$2,363,718	\$2,547,785	8%	\$4,031,578	\$4,206,109	4%	\$6,395,295	\$6,753,895	6%
Municipality of Crowsnest Pass	\$2,098,974	\$2,147,342	2%	\$516,778	\$556,344	8%	\$2,615,752	\$2,703,686	3%
Municipality of Jasper	\$2,220,893	\$2,320,420	4%	\$2,237,603	\$2,467,019	10%	\$4,458,497	\$4,787,439	7%
Regional Municipality of Wood Buffalo	\$30,831,036	\$28,848,766	-6%	\$44,430,748	\$46,664,206	5%	\$75,261,784	\$75,512,971	0%
Strathcona County	\$44,551,019	\$46,440,566	4%	\$22,896,237	\$23,889,058	4%	\$67,447,256	\$70,329,624	4%
Municipal District									
Athabasca County	\$2,567,858	\$2,681,064	4%	\$2,763,220	\$2,875,210	4%	\$5,331,077	\$5,556,274	4%
Beaver County	\$1,911,205	\$1,984,487	4%	\$1,535,121	\$1,524,835	-1%	\$3,446,326	\$3,509,322	2%
Big Lakes County	\$1,428,731	\$1,504,675	5%	\$3,469,040	\$3,719,380	7%	\$4,897,771	\$5,224,054	7%
Birch Hills County	\$280,204	\$300,012	7%	\$537,236	\$562,655	5%	\$817,440	\$862,667	6%
Brazeau County	\$2,535,669	\$2,591,584	2%	\$7,018,366	\$7,483,380	7%	\$9,554,034	\$10,074,964	5%
Camrose County ¹	\$3,404,953	\$3,578,990	5%	\$2,030,671	\$2,057,259	1%	\$5,435,624	\$5,636,249	4%
Cardston County	\$1,315,341	\$1,399,076	6%	\$296,107	\$330,709	12%	\$1,611,448	\$1,729,785	7%
Clear Hills County	\$459,428	\$475,479	3%	\$2,481,026	\$2,693,196	9%	\$2,940,454	\$3,168,675	8%
Clearwater County	\$4,883,439	\$4,956,097	1%	\$13,594,395	\$13,431,698	-1%	\$18,477,834	\$18,387,795	0%
County of Barrhead No. 11	\$1,880,097	\$1,979,609	5%	\$667,962	\$670,025	0%	\$2,548,059	\$2,649,634	4%
County of Forty Mile No. 8	\$1,108,291	\$1,234,124	11%	\$1,117,931	\$1,155,280	3%	\$2,226,223	\$2,389,404	7%
County of Grande Prairie No. 1	\$10,020,874	\$10,649,740	6%	\$12,825,281	\$13,813,642	8%	\$22,846,155	\$24,463,382	7%
County of Minburn No. 27	\$996,889	\$1,061,781	7%	\$1,311,408	\$1,383,617	6%	\$2,308,297	\$2,445,398	6%
County of Newell	\$2,431,316	\$2,476,882	2%	\$10,144,771	\$10,699,616	5%	\$12,576,087	\$13,176,497	5%
County of Northern Lights	\$1,055,998	\$1,107,858	5%	\$2,277,341	\$2,362,435	4%	\$3,333,340	\$3,470,293	4%

2020 Education Property Tax Requisition Comparison Report

Municipality	Residential / Farm Land Requisition			Non-Residential Requisition			Total Education Requisition		
	2019	2020	% Change	2019	2020	% Change	2019	2020	% Change
County of Paintearth No. 18	\$521,705	\$561,163	8%	\$1,566,873	\$1,661,902	6%	\$2,088,578	\$2,223,065	6%
County of St. Paul No. 19	\$2,625,159	\$2,477,553	-6%	\$1,899,458	\$1,985,848	5%	\$4,524,617	\$4,463,401	-1%
County of Stettler No. 6 ²	\$2,002,292	\$2,044,827	2%	\$2,149,700	\$2,246,368	4%	\$4,151,992	\$4,291,195	3%
County of Two Hills No. 21	\$1,024,041	\$1,086,436	6%	\$769,189	\$742,437	-3%	\$1,793,229	\$1,828,873	2%
County of Vermilion River	\$3,134,878	\$3,242,547	3%	\$4,052,970	\$4,267,420	5%	\$7,187,848	\$7,509,966	4%
County of Warner No. 5	\$1,068,985	\$1,158,246	8%	\$774,591	\$843,766	9%	\$1,843,576	\$2,002,012	9%
County of Wetaskiwin No. 10	\$5,166,661	\$5,331,091	3%	\$2,503,154	\$2,594,977	4%	\$7,669,815	\$7,926,068	3%
Cypress County	\$3,685,993	\$3,863,516	5%	\$10,047,945	\$11,183,861	11%	\$13,733,937	\$15,047,377	10%
Flagstaff County	\$1,306,410	\$1,291,526	-1%	\$2,550,522	\$2,627,637	3%	\$3,856,932	\$3,919,162	2%
Foothills County	\$17,774,397	\$18,475,525	4%	\$3,530,199	\$3,757,850	6%	\$21,304,596	\$22,233,375	4%
Kneehill County	\$1,572,752	\$1,666,819	6%	\$3,754,223	\$4,201,790	12%	\$5,326,974	\$5,868,609	10%
Lac Ste. Anne County	\$4,072,189	\$4,334,697	6%	\$1,172,092	\$1,242,206	6%	\$5,244,281	\$5,576,903	6%
Lacombe County	\$4,883,554	\$5,208,007	7%	\$7,094,330	\$7,206,649	2%	\$11,977,883	\$12,414,656	4%
Lamont County	\$1,415,141	\$1,489,455	5%	\$2,017,078	\$2,105,963	4%	\$3,432,219	\$3,595,418	5%
Leduc County	\$7,305,059	\$7,414,429	1%	\$17,850,021	\$18,876,982	6%	\$25,155,080	\$26,291,411	5%
Lethbridge County	\$2,992,624	\$3,175,965	6%	\$2,250,094	\$2,401,050	7%	\$5,242,718	\$5,577,014	6%
Mountain View County	\$6,361,611	\$6,607,126	4%	\$5,869,064	\$6,174,773	5%	\$12,230,675	\$12,781,899	5%
Municipal District of Acadia No. 34	\$163,925	\$180,037	10%	\$76,810	\$69,797	-9%	\$240,735	\$249,833	4%
Municipal District of Bighorn No. 8	\$1,269,111	\$1,444,711	14%	\$1,143,708	\$1,280,884	12%	\$2,412,818	\$2,725,595	13%
Municipal District of Bonnyville No. 87	\$5,168,975	\$4,941,237	-4%	\$7,920,050	\$8,320,227	5%	\$13,089,025	\$13,261,464	1%
Municipal District of Fairview No. 136	\$437,301	\$461,271	5%	\$437,748	\$452,862	3%	\$875,049	\$914,132	4%
Municipal District of Greenvale No. 16	\$2,602,074	\$2,743,369	5%	\$22,735,557	\$25,700,803	13%	\$25,337,631	\$28,444,172	12%
Municipal District of Lesser Slave River No. 124	\$1,371,794	\$1,432,013	4%	\$2,456,327	\$2,515,358	2%	\$3,828,120	\$3,947,371	3%
Municipal District of Opportunity No. 17	\$705,007	\$758,104	8%	\$7,863,752	\$8,234,018	5%	\$8,568,759	\$8,992,121	5%
Municipal District of Peace No. 135	\$437,630	\$462,075	6%	\$397,157	\$408,601	3%	\$834,787	\$870,676	4%
Municipal District of Pincher Creek No. 9	\$1,535,698	\$1,663,221	8%	\$1,179,375	\$1,230,576	4%	\$2,715,073	\$2,893,797	7%
Municipal District of Provost No. 52	\$712,090	\$746,984	5%	\$4,167,625	\$4,380,546	5%	\$4,879,715	\$5,127,530	5%
Municipal District of Ranchland No. 66	\$56,506	\$61,696	9%	\$519,333	\$549,980	6%	\$575,839	\$611,676	6%
Municipal District of Smoky River No. 130	\$585,514	\$618,376	6%	\$898,389	\$856,085	-5%	\$1,483,903	\$1,474,461	-1%
Municipal District of Spirit River No. 133	\$193,826	\$201,584	4%	\$431,445	\$441,044	2%	\$625,270	\$642,628	3%
Municipal District of Taber	\$2,050,227	\$2,174,988	6%	\$3,215,087	\$3,306,553	3%	\$5,265,314	\$5,481,541	4%
Municipal District of Wainwright No. 61	\$1,598,252	\$1,722,911	8%	\$4,347,096	\$4,641,151	7%	\$5,945,348	\$6,364,062	7%
Municipal District of Willow Creek No. 26 ³	\$1,936,360	\$2,092,273	8%	\$1,399,916	\$1,476,565	5%	\$3,336,277	\$3,568,838	7%
Northern Sunrise County	\$616,130	\$604,384	-2%	\$4,837,705	\$5,065,165	5%	\$5,453,834	\$5,669,549	4%
Parkland County	\$16,250,358	\$16,986,139	5%	\$9,422,883	\$10,398,164	10%	\$25,673,241	\$27,384,302	7%
Ponoka County	\$4,084,698	\$4,345,371	6%	\$3,723,909	\$3,830,254	3%	\$7,808,607	\$8,175,625	5%
Red Deer County	\$9,598,338	\$10,007,557	4%	\$8,948,488	\$9,276,864	4%	\$18,546,826	\$19,284,422	4%
Rocky View County	\$33,178,915	\$35,304,008	6%	\$15,717,339	\$17,236,721	10%	\$48,896,254	\$52,540,728	7%
Saddle Hills County	\$425,656	\$460,365	8%	\$5,453,526	\$6,098,997	12%	\$5,879,182	\$6,559,361	12%
Smoky Lake County	\$889,866	\$932,238	5%	\$1,035,497	\$1,096,567	6%	\$1,925,363	\$2,028,805	5%
Starland County	\$532,160	\$562,797	6%	\$1,555,733	\$1,642,444	6%	\$2,087,894	\$2,205,240	6%
Sturgeon County	\$10,003,698	\$10,381,158	4%	\$7,193,364	\$7,582,709	5%	\$17,197,062	\$17,963,868	4%
Thorhild County	\$1,069,810	\$1,106,440	3%	\$1,356,329	\$1,436,438	6%	\$2,426,139	\$2,542,877	5%
Vulcan County	\$1,710,941	\$1,838,093	7%	\$1,729,941	\$1,829,794	6%	\$3,440,882	\$3,667,887	7%
Westlock County	\$2,190,246	\$2,297,100	5%	\$610,387	\$617,336	1%	\$2,800,633	\$2,914,436	4%

2020 Education Property Tax Requisition Comparison Report

Municipality	Residential / Farm Land Requisition			Non-Residential Requisition			Total Education Requisition		
	2019	2020	% Change	2019	2020	% Change	2019	2020	% Change
Wheatland County	\$3,537,279	\$3,710,964	5%	\$6,870,370	\$7,231,659	5%	\$10,407,649	\$10,942,623	5%
Woodlands County	\$1,893,681	\$1,865,988	-1%	\$3,514,413	\$3,625,842	3%	\$5,408,095	\$5,491,830	2%
Yellowhead County	\$3,810,175	\$3,867,630	2%	\$19,235,642	\$20,742,704	8%	\$23,045,816	\$24,610,334	7%
Town									
Granum ³	\$75,410			\$8,157			\$83,567		
Town of Athabasca	\$719,340	\$717,847	0%	\$378,793	\$386,765	2%	\$1,098,132	\$1,104,612	1%
Town of Banff	\$4,107,095	\$4,958,132	21%	\$4,313,565	\$4,836,510	12%	\$8,420,661	\$9,794,642	16%
Town of Barrhead	\$1,004,260	\$1,034,974	3%	\$456,416	\$496,640	9%	\$1,460,676	\$1,531,614	5%
Town of Bashaw	\$155,150	\$164,989	6%	\$56,871	\$60,390	6%	\$212,021	\$225,379	6%
Town of Bassano	\$222,599	\$230,323	3%	\$104,643	\$109,166	4%	\$327,243	\$339,489	4%
Town of Beaverlodge	\$560,767	\$585,841	4%	\$255,942	\$276,495	8%	\$816,708	\$862,336	6%
Town of Bentley	\$235,041	\$242,567	3%	\$51,598	\$54,997	7%	\$286,639	\$297,564	4%
Town of Black Diamond	\$911,443	\$926,172	2%	\$150,463	\$159,521	6%	\$1,061,905	\$1,085,693	2%
Town of Blackfalds	\$3,110,037	\$3,093,866	-1%	\$538,294	\$594,361	10%	\$3,648,331	\$3,688,228	1%
Town of Bon Accord	\$375,137	\$382,749	2%	\$22,494	\$23,350	4%	\$397,631	\$406,099	2%
Town of Bonnyville	\$1,649,964	\$1,584,601	-4%	\$1,489,805	\$1,472,127	-1%	\$3,139,770	\$3,056,728	-3%
Town of Bow Island	\$315,445	\$338,724	7%	\$150,705	\$170,100	13%	\$466,150	\$508,824	9%
Town of Bowden	\$246,766	\$252,572	2%	\$40,696	\$44,003	8%	\$287,462	\$296,574	3%
Town of Bruderheim	\$361,382	\$356,349	-1%	\$60,573	\$64,177	6%	\$421,955	\$420,526	0%
Town of Calmar	\$573,560	\$595,146	4%	\$151,375	\$172,225	14%	\$724,935	\$767,371	6%
Town of Canmore	\$15,036,862	\$17,092,185	14%	\$3,635,197	\$4,195,757	15%	\$18,672,060	\$21,287,942	14%
Town of Cardston	\$744,398	\$777,997	5%	\$152,434	\$163,634	7%	\$896,832	\$941,630	5%
Town of Carstairs	\$1,406,901	\$1,506,131	7%	\$243,743	\$252,623	4%	\$1,650,644	\$1,758,754	7%
Town of Castor	\$158,381	\$166,681	5%	\$52,215	\$53,408	2%	\$210,596	\$220,089	5%
Town of Claresholm	\$878,775	\$917,361	4%	\$269,702	\$303,686	13%	\$1,148,477	\$1,221,047	6%
Town of Coaldale	\$2,173,240	\$2,337,883	8%	\$373,461	\$453,134	21%	\$2,546,701	\$2,791,017	10%
Town of Coalhurst	\$633,078	\$667,180	5%	\$45,679	\$48,100	5%	\$678,758	\$715,279	5%
Town of Cochrane	\$12,549,619	\$13,393,415	7%	\$2,203,501	\$2,366,922	7%	\$14,753,121	\$15,760,338	7%
Town of Coronation	\$135,369	\$143,802	6%	\$83,413	\$84,740	2%	\$218,782	\$228,542	4%
Town of Crossfield	\$1,089,265	\$1,149,081	5%	\$619,535	\$688,833	11%	\$1,708,800	\$1,837,914	8%
Town of Daysland	\$196,068	\$172,843	-12%	\$29,029	\$25,630	-12%	\$225,097	\$198,474	-12%
Town of Devon	\$1,998,768	\$2,070,140	4%	\$420,176	\$454,166	8%	\$2,418,945	\$2,524,306	4%
Town of Didsbury	\$1,345,022	\$1,341,854	0%	\$258,355	\$268,976	4%	\$1,603,377	\$1,610,830	0%
Town of Drayton Valley	\$1,978,941	\$1,961,183	-1%	\$1,857,170	\$1,933,089	4%	\$3,836,111	\$3,894,272	2%
Town of Drumheller	\$1,793,930	\$1,858,941	4%	\$922,524	\$912,004	-1%	\$2,716,453	\$2,770,945	2%
Town of Eckville	\$242,068	\$245,972	2%	\$75,030	\$76,725	2%	\$317,098	\$322,698	2%
Town of Edson	\$2,309,024	\$2,383,489	3%	\$1,482,124	\$1,551,931	5%	\$3,791,148	\$3,935,420	4%
Town of Elk Point	\$332,779	\$321,278	-3%	\$192,278	\$200,084	4%	\$525,057	\$521,362	-1%
Town of Fairview	\$587,629	\$597,300	2%	\$269,860	\$252,913	-6%	\$857,490	\$850,213	-1%
Town of Falher	\$141,574	\$151,871	7%	\$117,866	\$122,732	4%	\$259,441	\$274,603	6%
Town of Fort Macleod	\$657,668	\$684,140	4%	\$341,747	\$375,888	10%	\$999,416	\$1,060,028	6%
Town of Fox Creek	\$540,089	\$524,759	-3%	\$591,538	\$628,845	6%	\$1,131,628	\$1,153,604	2%
Town of Gibbons	\$908,543	\$916,037	1%	\$103,656	\$108,079	4%	\$1,012,199	\$1,024,116	1%
Town of Grimshaw	\$568,397	\$544,343	-4%	\$197,946	\$186,281	-6%	\$766,343	\$730,624	-5%

2020 Education Property Tax Requisition Comparison Report

Municipality	Residential / Farm Land Requisition			Non-Residential Requisition			Total Education Requisition		
	2019	2020	% Change	2019	2020	% Change	2019	2020	% Change
Town of Hanna	\$475,572	\$465,927	-2%	\$198,880	\$222,783	12%	\$674,452	\$688,711	2%
Town of Hardisty	\$187,518	\$194,248	4%	\$110,103	\$116,044	5%	\$297,621	\$310,292	4%
Town of High Level	\$583,430	\$601,944	3%	\$602,110	\$624,932	4%	\$1,185,539	\$1,226,876	3%
Town of High Prairie	\$435,297	\$454,133	4%	\$375,718	\$405,595	8%	\$811,015	\$859,728	6%
Town of High River	\$4,382,013	\$4,530,254	3%	\$1,311,396	\$1,381,506	5%	\$5,693,410	\$5,911,760	4%
Town of Hinton	\$2,830,788	\$3,035,837	7%	\$1,515,402	\$1,700,551	12%	\$4,346,190	\$4,736,388	9%
Town of Innisfail	\$2,187,696	\$2,223,433	2%	\$832,980	\$888,314	7%	\$3,020,675	\$3,111,747	3%
Town of Irricana	\$325,094	\$330,259	2%	\$25,692	\$27,007	5%	\$350,786	\$357,267	2%
Town of Killam	\$191,650	\$194,354	1%	\$86,900	\$93,537	8%	\$278,550	\$287,891	3%
Town of Lamont	\$381,312	\$382,186	0%	\$111,251	\$116,265	5%	\$492,563	\$498,450	1%
Town of Legal	\$313,326	\$322,092	3%	\$31,645	\$34,228	8%	\$344,971	\$356,320	3%
Town of Magrath	\$487,821	\$523,542	7%	\$45,213	\$49,108	9%	\$533,034	\$572,649	7%
Town of Manning	\$217,153	\$229,977	6%	\$121,297	\$122,580	1%	\$338,450	\$352,557	4%
Town of Mayerthorpe	\$214,345	\$213,092	-1%	\$91,818	\$91,924	0%	\$306,163	\$305,016	0%
Town of McLennan	\$82,764	\$86,546	5%	\$38,723	\$38,879	0%	\$121,487	\$125,426	3%
Town of Milk River	\$145,121	\$153,973	6%	\$43,931	\$42,018	-4%	\$189,052	\$195,991	4%
Town of Millet	\$510,588	\$517,643	1%	\$93,847	\$106,157	13%	\$604,435	\$623,800	3%
Town of Morinville	\$3,005,634	\$3,036,834	1%	\$594,248	\$715,100	20%	\$3,599,882	\$3,751,935	4%
Town of Mundare	\$219,194	\$228,961	4%	\$41,735	\$46,574	12%	\$260,929	\$275,534	6%
Town of Nanton	\$666,177	\$635,005	-5%	\$190,812	\$187,741	-2%	\$856,989	\$822,747	-4%
Town of Nobleford	\$268,289	\$292,804	9%	\$98,820	\$114,803	16%	\$367,108	\$407,606	11%
Town of Okotoks	\$11,579,785	\$12,078,510	4%	\$2,642,105	\$2,827,723	7%	\$14,221,891	\$14,906,233	5%
Town of Olds	\$2,883,444	\$2,978,090	3%	\$1,155,161	\$1,281,134	11%	\$4,038,605	\$4,259,224	5%
Town of Onoway	\$200,940	\$211,785	5%	\$128,880	\$136,812	6%	\$329,820	\$348,597	6%
Town of Oyen	\$169,787	\$172,947	2%	\$62,845	\$77,070	23%	\$232,633	\$250,017	7%
Town of Peace River	\$1,750,104	\$1,796,303	3%	\$1,091,948	\$1,143,013	5%	\$2,842,052	\$2,939,316	3%
Town of Penhold	\$974,999	\$937,027	-4%	\$106,429	\$115,605	9%	\$1,081,428	\$1,052,632	-3%
Town of Picture Butte	\$377,902	\$396,623	5%	\$115,040	\$119,085	4%	\$492,942	\$515,709	5%
Town of Pincher Creek	\$820,612	\$905,491	10%	\$402,281	\$439,258	9%	\$1,222,893	\$1,344,749	10%
Town of Ponoka	\$1,756,059	\$1,727,674	-2%	\$644,747	\$708,915	10%	\$2,400,806	\$2,436,589	1%
Town of Provost	\$415,006	\$417,061	0%	\$271,295	\$277,918	2%	\$686,301	\$694,979	1%
Town of Rainbow Lake	\$120,482	\$104,942	-13%	\$116,337	\$110,418	-5%	\$236,819	\$215,360	-9%
Town of Raymond	\$761,873	\$843,616	11%	\$69,094	\$78,613	14%	\$830,967	\$922,229	11%
Town of Redcliff	\$1,311,618	\$1,377,326	5%	\$760,777	\$775,768	2%	\$2,072,395	\$2,153,094	4%
Town of Redwater	\$549,761	\$557,224	1%	\$343,907	\$379,993	10%	\$893,669	\$937,217	5%
Town of Rimbey	\$599,591	\$604,534	1%	\$302,798	\$321,349	6%	\$902,389	\$925,883	3%
Town of Rocky Mountain House	\$1,830,671	\$1,834,455	0%	\$903,506	\$923,821	2%	\$2,734,177	\$2,758,275	1%
Town of Sedgewick	\$184,197	\$189,652	3%	\$65,677	\$70,849	8%	\$249,875	\$260,500	4%
Town of Sexsmith	\$643,693	\$669,186	4%	\$235,087	\$243,051	3%	\$878,780	\$912,238	4%
Town of Slave Lake	\$1,711,246	\$1,653,060	-3%	\$967,833	\$943,345	-3%	\$2,679,079	\$2,596,405	-3%
Town of Smoky Lake	\$189,247	\$190,343	1%	\$75,869	\$78,591	4%	\$265,116	\$268,934	1%
Town of Spirit River	\$174,777	\$182,892	5%	\$72,868	\$75,631	4%	\$247,645	\$258,523	4%
Town of St. Paul	\$1,368,518	\$1,365,618	0%	\$681,571	\$684,288	0%	\$2,050,089	\$2,049,905	0%
Town of Stavely	\$131,484	\$133,972	2%	\$22,970	\$28,817	25%	\$154,454	\$162,790	5%
Town of Stettler	\$1,414,274	\$1,443,212	2%	\$900,709	\$965,433	7%	\$2,314,984	\$2,408,645	4%

2020 Education Property Tax Requisition Comparison Report

Municipality	Residential / Farm Land Requisition			Non-Residential Requisition			Total Education Requisition		
	2019	2020	% Change	2019	2020	% Change	2019	2020	% Change
Town of Stony Plain	\$5,857,306	\$6,002,651	2%	\$1,587,006	\$1,742,056	10%	\$7,444,313	\$7,744,707	4%
Town of Strathmore	\$4,265,716	\$4,440,486	4%	\$1,245,869	\$1,290,483	4%	\$5,511,584	\$5,730,970	4%
Town of Sundre	\$743,240	\$790,106	6%	\$288,336	\$321,178	11%	\$1,031,576	\$1,111,284	8%
Town of Swan Hills	\$211,880	\$190,436	-10%	\$144,224	\$142,330	-1%	\$356,103	\$332,767	-7%
Town of Sylvan Lake	\$5,496,776	\$5,707,269	4%	\$1,159,483	\$1,302,599	12%	\$6,656,259	\$7,009,868	5%
Town of Taber	\$1,827,427	\$1,857,508	2%	\$889,940	\$926,099	4%	\$2,717,367	\$2,783,608	2%
Town of Thorsby	\$195,922	\$198,542	1%	\$76,211	\$76,197	0%	\$272,133	\$274,740	1%
Town of Three Hills	\$650,849	\$697,978	7%	\$205,511	\$232,472	13%	\$856,360	\$930,450	9%
Town of Tofield	\$509,712	\$514,625	1%	\$202,735	\$209,872	4%	\$712,447	\$724,497	2%
Town of Trochu	\$190,663	\$190,514	0%	\$61,136	\$62,297	2%	\$251,799	\$252,810	0%
Town of Turner Valley	\$939,513	\$975,678	4%	\$111,379	\$117,705	6%	\$1,050,891	\$1,093,383	4%
Town of Two Hills	\$182,007	\$181,198	0%	\$54,292	\$52,309	-4%	\$236,299	\$233,507	-1%
Town of Valleyview	\$351,251	\$351,901	0%	\$312,906	\$322,369	3%	\$664,156	\$674,270	2%
Town of Vauxhall	\$171,538	\$179,765	5%	\$57,249	\$65,025	14%	\$228,787	\$244,790	7%
Town of Vegreville	\$1,379,076	\$1,445,782	5%	\$730,215	\$784,499	7%	\$2,109,291	\$2,230,281	6%
Town of Vermilion	\$1,081,948	\$1,116,203	3%	\$616,057	\$638,435	4%	\$1,698,005	\$1,754,637	3%
Town of Viking	\$194,901	\$199,071	2%	\$80,620	\$82,188	2%	\$275,521	\$281,259	2%
Town of Vulcan	\$439,815	\$452,441	3%	\$144,588	\$149,100	3%	\$584,403	\$601,542	3%
Town of Wainwright	\$1,539,088	\$1,632,876	6%	\$846,475	\$891,101	5%	\$2,385,563	\$2,523,976	6%
Town of Wembley	\$383,848	\$387,797	1%	\$129,013	\$154,652	20%	\$512,861	\$542,449	6%
Town of Westlock	\$1,145,364	\$1,099,157	-4%	\$691,646	\$681,887	-1%	\$1,837,010	\$1,781,044	-3%
Town of Whitecourt	\$2,840,552	\$2,851,140	0%	\$2,638,951	\$2,580,524	-2%	\$5,479,503	\$5,431,665	-1%
Village									
Alberta Beach	\$432,618	\$436,121	1%	\$43,310	\$43,579	1%	\$475,928	\$479,699	1%
Village of Acme	\$131,551	\$133,516	1%	\$29,708	\$35,494	19%	\$161,258	\$169,009	5%
Village of Alix	\$163,280	\$157,783	-3%	\$56,299	\$60,295	7%	\$219,579	\$218,078	-1%
Village of Alliance	\$15,693	\$13,804	-12%	\$10,722	\$9,889	-8%	\$26,414	\$23,693	-10%
Village of Amisk	\$31,349	\$32,354	3%	\$3,359	\$3,475	3%	\$34,707	\$35,829	3%
Village of Andrew	\$80,457	\$83,620	4%	\$19,491	\$21,041	8%	\$99,947	\$104,661	5%
Village of Arrowwood	\$31,747	\$31,283	-1%	\$12,712	\$11,891	-6%	\$44,459	\$43,174	-3%
Village of Barnwell	\$194,797	\$222,812	14%	\$13,676	\$15,616	14%	\$208,472	\$238,428	14%
Village of Barons	\$39,123	\$42,969	10%	\$9,782	\$12,270	25%	\$48,905	\$55,239	13%
Village of Bawlf	\$78,141	\$80,017	2%	\$11,587	\$12,235	6%	\$89,727	\$92,252	3%
Village of Beiseker	\$188,107	\$188,638	0%	\$101,565	\$106,670	5%	\$289,672	\$295,309	2%
Village of Berwyn	\$81,138	\$82,636	2%	\$11,487	\$9,940	-13%	\$92,626	\$92,576	0%
Village of Big Valley	\$55,257	\$58,289	5%	\$15,435	\$15,677	2%	\$70,692	\$73,966	5%
Village of Bittern Lake	\$50,142	\$54,735	9%	\$7,247	\$7,561	4%	\$57,389	\$62,296	9%
Village of Boyle	\$177,623	\$174,041	-2%	\$97,276	\$98,883	2%	\$274,899	\$272,924	-1%
Village of Breton	\$117,754	\$119,674	2%	\$46,742	\$48,683	4%	\$164,496	\$168,356	2%
Village of Carbon	\$95,032	\$98,309	3%	\$9,871	\$9,911	0%	\$104,904	\$108,220	3%
Village of Carmangay	\$41,519	\$46,673	12%	\$9,055	\$8,722	-4%	\$50,574	\$55,395	10%
Village of Caroline	\$71,476	\$75,095	5%	\$31,888	\$32,685	2%	\$103,365	\$107,780	4%
Village of Cereal	\$10,124	\$9,909	-2%	\$3,208	\$3,390	6%	\$13,332	\$13,299	0%
Village of Champion	\$49,110	\$53,511	9%	\$6,780	\$8,009	18%	\$55,891	\$61,521	10%

2020 Education Property Tax Requisition Comparison Report

Municipality	Residential / Farm Land Requisition			Non-Residential Requisition			Total Education Requisition		
	2019	2020	% Change	2019	2020	% Change	2019	2020	% Change
Village of Chauvin	\$43,194	\$44,067	2%	\$22,631	\$22,345	-1%	\$65,825	\$66,411	1%
Village of Chipman	\$53,967	\$56,984	6%	\$16,306	\$17,366	7%	\$70,274	\$74,351	6%
Village of Clive	\$183,083	\$195,779	7%	\$11,800	\$12,198	3%	\$194,884	\$207,977	7%
Village of Clyde	\$81,349	\$82,395	1%	\$7,176	\$8,065	12%	\$88,525	\$90,460	2%
Village of Consort	\$106,103	\$111,069	5%	\$64,063	\$66,392	4%	\$170,166	\$177,461	4%
Village of Coutts	\$36,833	\$35,607	-3%	\$32,774	\$35,234	8%	\$69,607	\$70,841	2%
Village of Cowley	\$37,835	\$40,807	8%	\$11,875	\$12,335	4%	\$49,710	\$53,142	7%
Village of Cremona	\$104,322	\$104,174	0%	\$22,686	\$25,606	13%	\$127,008	\$129,779	2%
Village of Czar	\$26,603	\$27,282	3%	\$8,257	\$8,485	3%	\$34,860	\$35,767	3%
Village of Delburne	\$191,994	\$195,515	2%	\$36,447	\$42,592	17%	\$228,442	\$238,107	4%
Village of Delia	\$34,619	\$36,527	6%	\$10,979	\$12,883	17%	\$45,598	\$49,410	8%
Village of Dewberry	\$24,324	\$24,337	0%	\$12,850	\$13,074	2%	\$37,173	\$37,411	1%
Village of Donalda	\$31,827	\$31,858	0%	\$5,811	\$6,214	7%	\$37,639	\$38,071	1%
Village of Donnelly	\$53,638	\$54,227	1%	\$8,652	\$8,616	0%	\$62,290	\$62,844	1%
Village of Duchess	\$222,311	\$230,554	4%	\$35,196	\$38,314	9%	\$257,507	\$268,869	4%
Village of Edberg	\$17,233	\$17,272	0%	\$1,161	\$1,166	0%	\$18,394	\$18,439	0%
Village of Edgerton	\$66,070	\$68,955	4%	\$12,348	\$12,395	0%	\$78,418	\$81,350	4%
Village of Elnora	\$53,817	\$52,891	-2%	\$10,221	\$10,382	2%	\$64,038	\$63,273	-1%
Village of Empress	\$15,992	\$16,010	0%	\$4,903	\$4,481	-9%	\$20,895	\$20,490	-2%
Village of Ferintosh ¹	\$36,312			\$5,495			\$41,807		
Village of Foremost	\$89,283	\$93,955	5%	\$34,378	\$40,923	19%	\$123,660	\$134,878	9%
Village of Forestburg	\$146,748	\$150,451	3%	\$34,628	\$37,311	8%	\$181,376	\$187,762	4%
Village of Gadsby ²	\$3,347			\$589			\$3,937		
Village of Girouxville	\$33,890	\$33,615	-1%	\$9,692	\$9,834	1%	\$43,582	\$43,449	0%
Village of Glendon	\$106,725	\$109,411	3%	\$18,575	\$19,245	4%	\$125,299	\$128,656	3%
Village of Glenwood	\$60,336	\$62,214	3%	\$11,006	\$11,436	4%	\$71,342	\$73,650	3%
Village of Halkirk	\$14,449	\$15,280	6%	\$7,013	\$7,267	4%	\$21,462	\$22,547	5%
Village of Hay Lakes	\$116,345	\$118,862	2%	\$7,063	\$7,266	3%	\$123,408	\$126,127	2%
Village of Heisler	\$17,756	\$18,035	2%	\$4,987	\$5,222	5%	\$22,742	\$23,257	2%
Village of Hill Spring	\$39,124	\$37,476	-4%	\$1,972	\$1,983	1%	\$41,096	\$39,459	-4%
Village of Hines Creek	\$34,181	\$34,672	1%	\$17,465	\$18,516	6%	\$51,645	\$53,188	3%
Village of Holden	\$50,493	\$51,048	1%	\$25,999	\$31,740	22%	\$76,492	\$82,788	8%
Village of Hughenden	\$28,396	\$28,850	2%	\$6,044	\$6,296	4%	\$34,440	\$35,146	2%
Village of Hussar	\$33,342	\$33,426	0%	\$9,491	\$9,766	3%	\$42,834	\$43,192	1%
Village of Hythe	\$109,845	\$116,240	6%	\$77,684	\$81,630	5%	\$187,530	\$197,870	6%
Village of Innisfree	\$26,050	\$26,895	3%	\$10,582	\$11,059	5%	\$36,632	\$37,954	4%
Village of Irma	\$93,989	\$98,318	5%	\$29,073	\$29,414	1%	\$123,062	\$127,732	4%
Village of Kitscoty	\$238,974	\$230,075	-4%	\$30,146	\$30,833	2%	\$269,120	\$260,908	-3%
Village of Linden	\$163,178	\$170,423	4%	\$59,773	\$65,841	10%	\$222,951	\$236,265	6%
Village of Lomond	\$24,204	\$24,057	-1%	\$7,990	\$8,195	3%	\$32,194	\$32,252	0%
Village of Longview	\$101,579	\$99,845	-2%	\$32,756	\$39,902	22%	\$134,335	\$139,747	4%
Village of Loughheed	\$33,157	\$33,301	0%	\$19,572	\$20,766	6%	\$52,729	\$54,067	3%
Village of Mannville	\$118,767	\$119,959	1%	\$35,790	\$28,963	-19%	\$154,557	\$148,922	-4%
Village of Marwayne	\$111,098	\$111,912	1%	\$14,889	\$15,601	5%	\$125,987	\$127,512	1%
Village of Milo	\$23,121	\$23,505	2%	\$7,723	\$9,360	21%	\$30,844	\$32,865	7%

Requisitions are actuals, subject to revision

2020 Education Property Tax Requisition Comparison Report

Municipality	Residential / Farm Land Requisition			Non-Residential Requisition			Total Education Requisition		
	2019	2020	% Change	2019	2020	% Change	2019	2020	% Change
Village of Morrin	\$35,610	\$37,036	4%	\$4,125	\$4,216	2%	\$39,735	\$41,252	4%
Village of Munson	\$42,413	\$43,926	4%	\$5,031	\$5,412	8%	\$47,444	\$49,338	4%
Village of Myrnam	\$46,578	\$48,050	3%	\$6,144	\$5,879	-4%	\$52,723	\$53,929	2%
Village of Nampa	\$66,986	\$63,521	-5%	\$80,616	\$73,753	-9%	\$147,602	\$137,273	-7%
Village of Paradise Valley	\$21,093	\$22,436	6%	\$4,971	\$5,246	6%	\$26,064	\$27,682	6%
Village of Rockyford	\$63,949	\$64,604	1%	\$21,108	\$22,171	5%	\$85,057	\$86,775	2%
Village of Rosalind	\$28,991	\$30,630	6%	\$9,235	\$9,522	3%	\$38,226	\$40,153	5%
Village of Rosemary	\$59,255	\$61,592	4%	\$6,608	\$7,460	13%	\$65,863	\$69,053	5%
Village of Rycroft	\$91,418	\$95,291	4%	\$83,265	\$92,515	11%	\$174,684	\$187,806	8%
Village of Ryley	\$63,020	\$64,164	2%	\$37,240	\$41,454	11%	\$100,260	\$105,617	5%
Village of Spring Lake	\$322,938	\$348,339	8%	\$10,159	\$10,499	3%	\$333,098	\$358,839	8%
Village of Standard	\$74,101	\$77,099	4%	\$51,939	\$56,068	8%	\$126,040	\$133,167	6%
Village of Stirling	\$226,034	\$239,491	6%	\$8,042	\$8,813	10%	\$234,076	\$248,304	6%
Village of Veteran	\$24,649	\$24,811	1%	\$7,258	\$7,913	9%	\$31,907	\$32,724	3%
Village of Vilna	\$28,717	\$30,189	5%	\$7,740	\$7,938	3%	\$36,457	\$38,127	5%
Village of Wabamun	\$169,502	\$173,420	2%	\$78,490	\$80,839	3%	\$247,992	\$254,258	3%
Village of Warburg	\$122,245	\$128,768	5%	\$38,746	\$38,876	0%	\$160,990	\$167,644	4%
Village of Warner	\$52,287	\$55,630	6%	\$15,597	\$16,995	9%	\$67,883	\$72,625	7%
Village of Waskatenau	\$42,004	\$44,466	6%	\$7,307	\$7,852	7%	\$49,311	\$52,318	6%
Village of Youngstown	\$20,471	\$20,022	-2%	\$5,577	\$5,926	6%	\$26,048	\$25,947	0%
Summer Village									
Summer Village of Argentea Beach	\$193,383	\$203,349	5%	\$2,171	\$2,450	13%	\$195,554	\$205,799	5%
Summer Village of Betula Beach	\$55,506	\$58,409	5%	\$180	\$191	6%	\$55,687	\$58,601	5%
Summer Village of Birch Cove	\$31,498	\$34,119	8%	\$188	\$204	9%	\$31,686	\$34,323	8%
Summer Village of Birchcliff	\$443,658	\$464,746	5%	\$6,591	\$7,127	8%	\$450,249	\$471,872	5%
Summer Village of Bondiss	\$140,054	\$148,738	6%	\$2,481	\$2,619	6%	\$142,535	\$151,357	6%
Summer Village of Bonnyville Beach	\$81,902	\$77,308	-6%	\$603	\$629	4%	\$82,505	\$77,937	-6%
Summer Village of Burnstick Lake	\$61,654	\$57,278	-7%	\$119	\$125	5%	\$61,773	\$57,403	-7%
Summer Village of Castle Island	\$31,868	\$33,636	6%	\$56	\$62	10%	\$31,924	\$33,698	6%
Summer Village of Crystal Springs	\$173,374	\$191,627	11%	\$1,088	\$1,179	8%	\$174,462	\$192,806	11%
Summer Village of Ghost Lake	\$127,704	\$121,969	-4%	\$231	\$225	-3%	\$127,935	\$122,194	-4%
Summer Village of Golden Days	\$281,397	\$291,239	3%	\$2,829	\$3,064	8%	\$284,225	\$294,303	4%
Summer Village of Grandview	\$208,521	\$220,101	6%	\$953	\$1,022	7%	\$209,474	\$221,123	6%
Summer Village of Gull Lake	\$223,210	\$242,880	9%	\$4,209	\$4,385	4%	\$227,419	\$247,265	9%
Summer Village of Half Moon Bay	\$101,064	\$109,346	8%	\$140	\$155	10%	\$101,204	\$109,501	8%
Summer Village of Horseshoe Bay	\$41,060	\$42,500	4%	\$625	\$650	4%	\$41,684	\$43,151	4%
Summer Village of Island Lake	\$236,336	\$261,848	11%	\$2,329	\$2,424	4%	\$238,664	\$264,271	11%
Summer Village of Island Lake South	\$55,289	\$58,712	6%	\$366	\$382	4%	\$55,655	\$59,094	6%
Summer Village of Itaska Beach	\$84,531	\$90,727	7%	\$449	\$480	7%	\$84,981	\$91,206	7%
Summer Village of Jarvis Bay	\$427,217	\$453,516	6%	\$1,292	\$1,305	1%	\$428,509	\$454,822	6%
Summer Village of Kapasiwin	\$75,767	\$76,777	1%	\$265	\$282	7%	\$76,031	\$77,059	1%
Summer Village of Lakeview	\$39,497	\$42,131	7%	\$219	\$221	0%	\$39,717	\$42,352	7%
Summer Village of Larkspur	\$87,086	\$83,185	-4%	\$193	\$191	-1%	\$87,279	\$83,376	-4%
Summer Village of Ma-Me-O Beach	\$218,981	\$233,073	6%	\$7,386	\$8,187	11%	\$226,367	\$241,261	7%

2020 Education Property Tax Requisition Comparison Report

Municipality	Residential / Farm Land Requisition			Non-Residential Requisition			Total Education Requisition		
	2019	2020	% Change	2019	2020	% Change	2019	2020	% Change
Summer Village of Mewatha Beach	\$136,779	\$135,799	-1%	\$769	\$806	5%	\$137,548	\$136,605	-1%
Summer Village of Nakamun Park	\$86,198	\$87,971	2%	\$448	\$513	15%	\$86,646	\$88,483	2%
Summer Village of Norglenwold	\$512,302	\$539,557	5%	\$1,898	\$2,002	5%	\$514,200	\$541,558	5%
Summer Village of Norris Beach	\$81,075	\$85,464	5%	\$595	\$639	7%	\$81,670	\$86,103	5%
Summer Village of Parkland Beach	\$184,703	\$197,683	7%	\$8,022	\$8,960	12%	\$192,725	\$206,643	7%
Summer Village of Pelican Narrows	\$162,102	\$153,213	-5%	\$1,436	\$1,062	-26%	\$163,538	\$154,275	-6%
Summer Village of Point Alison	\$55,157	\$60,089	9%	\$251	\$271	8%	\$55,408	\$60,360	9%
Summer Village of Poplar Bay	\$218,336	\$236,117	8%	\$1,390	\$1,498	8%	\$219,726	\$237,615	8%
Summer Village of Rochon Sands	\$151,826	\$162,484	7%	\$1,432	\$1,556	9%	\$153,258	\$164,039	7%
Summer Village of Ross Haven	\$149,808	\$147,321	-2%	\$1,731	\$1,839	6%	\$151,538	\$149,160	-2%
Summer Village of Sandy Beach	\$97,691	\$100,138	3%	\$2,212	\$2,296	4%	\$99,903	\$102,434	3%
Summer Village of Seba Beach	\$396,981	\$440,897	11%	\$14,224	\$15,344	8%	\$411,205	\$456,240	11%
Summer Village of Silver Beach	\$176,195	\$197,663	12%	\$683	\$756	11%	\$176,878	\$198,420	12%
Summer Village of Silver Sands	\$138,559	\$142,172	3%	\$3,904	\$3,996	2%	\$142,463	\$146,168	3%
Summer Village of South Baptiste	\$48,565	\$46,487	-4%	\$2,318	\$2,444	5%	\$50,883	\$48,931	-4%
Summer Village of South View	\$46,272	\$46,104	0%	\$441	\$497	13%	\$46,713	\$46,602	0%
Summer Village of Sunbreaker Cove	\$331,238	\$341,739	3%	\$550	\$584	6%	\$331,788	\$342,323	3%
Summer Village of Sundance Beach	\$126,941	\$137,109	8%	\$288	\$293	2%	\$127,230	\$137,402	8%
Summer Village of Sunrise Beach	\$58,554	\$63,473	8%	\$474	\$521	10%	\$59,028	\$63,994	8%
Summer Village of Sunset Beach	\$74,127	\$79,754	8%	\$518	\$553	7%	\$74,646	\$80,307	8%
Summer Village of Sunset Point	\$162,228	\$166,677	3%	\$651	\$679	4%	\$162,879	\$167,356	3%
Summer Village of Val Quentin	\$120,772	\$123,915	3%	\$584	\$624	7%	\$121,357	\$124,539	3%
Summer Village of Waiparous	\$79,327	\$78,572	-1%	\$157	\$143	-9%	\$79,485	\$78,715	-1%
Summer Village of West Baptiste	\$78,536	\$82,872	6%	\$441	\$470	7%	\$78,977	\$83,342	6%
Summer Village of West Cove	\$138,002	\$140,649	2%	\$705	\$757	7%	\$138,707	\$141,406	2%
Summer Village of Whispering Hills	\$111,819	\$115,942	4%	\$928	\$1,029	11%	\$112,747	\$116,972	4%
Summer Village of White Sands	\$269,295	\$297,000	10%	\$1,674	\$1,792	7%	\$270,969	\$298,793	10%
Summer Village of Yellowstone	\$87,588	\$89,725	2%	\$559	\$595	6%	\$88,147	\$90,320	2%

2020 Education Property Tax Requisition Comparison Report

Municipality	Residential / Farm Land Requisition			Non-Residential Requisition			Total Education Requisition		
	2019	2020	% Change	2019	2020	% Change	2019	2020	% Change
Improvement District									
Improvement District No. 04 (Waterton)	\$274,025	\$317,871	16%	\$183,236	\$193,943	6%	\$457,261	\$511,814	12%
Improvement District No. 09 (Banff)	\$289,423	\$323,926	12%	\$2,663,438	\$2,974,230	12%	\$2,952,861	\$3,298,156	12%
Improvement District No. 12 (Jasper National Park)	\$13,706	\$14,550	6%	\$174,763	\$187,507	7%	\$188,469	\$202,057	7%
Improvement District No. 13 (Elk Island)	\$957	\$998	4%	\$21,274	\$22,613	6%	\$22,230	\$23,611	6%
Improvement District No. 24 (Wood Buffalo)	\$6,612	\$6,709	1%	\$4,857	\$4,776	-2%	\$11,469	\$11,485	0%
Improvement District No. 349	\$0	\$0	0%	\$4,185,524	\$4,322,042	3%	\$4,185,524	\$4,322,042	3%
Kananaskis Improvement District	\$162,065	\$169,036	4%	\$363,477	\$396,412	9%	\$525,542	\$565,448	8%
Special Area									
Special Areas Board	\$1,478,182	\$1,543,668	4%	\$10,224,457	\$10,935,749	7%	\$11,702,639	\$12,479,417	7%
Townsite									
Townsite of Redwood Meadows Administration Society	\$452,926	\$456,644	1%	\$0	\$0	0%	\$452,926	\$456,644	1%

Municipality Dissolutions

¹Village of Ferintosh (municipal code 0109) dissolved into Camrose County (municipal code 0049) (effective January 1, 2020)

²Village of Gadsby (municipal code 0121) dissolved into the County of Stettler No. 6 (municipal code 0299) (effective February 1, 2020)

³Town of Granum (municipal code 0135) dissolved into the Municipal District of Willow Creek No. 26 (municipal code 0353) (effective February 1, 2020)



STAFF REPORT

Title: City of Cold Lake Crime Open House

Meeting Date: February 18, 2020

Executive Summary:

Ms. Eleanor Evans and numerous business owners attended the January 14, 2020 regular meeting of Council as a delegation.

Ms. Evans brought forth concerns of the safety and security of Cold Lake citizens, businesses and properties, and the cost of the criminal activity affecting such, and requested an increase in security to curb the ongoing criminal activity which is having a very frightening impact on the City.

Ms. Evans advised that up until now, many businesses have been reacting to criminal activity, at a huge expense, by installing cameras, alarm systems, lights, barriers, gates, bars, fences, etc. and bearing the increasing cost of insurance. The safety and security of Cold Lake citizens needs to become a number one priority.

Ms. Evans also advise that she would like to see the City retain a security company to patrol the community (emphasis on the downtown commercial district).

Background:

The Cold Lake RCMP along with the City of Cold Lake hosted a public Town Hall meeting Wednesday February 26, 2020 at the Lakeland Inn from 7 p.m. to 9 p.m. The Town Hall meeting presented statistical information as well as questions and discussion on related activities impacting the community. This information is found attached to this report.

The focus of administration's report is to engage Council's on their perspectives from the Town Hall meeting and to garner feedback on recent initiatives relating to crime and law enforcement.

Service expectations respecting Community Peace Officers. Areas of focus rising from the Town Hall Meeting include:

- Community engagement.
- Crime Prevention through Environmental Design (CPTED) program.
- Officer complement and hours of service.



As noted previously, the RCMP lost two (2) members when the Alberta Liquor and Gaming Association lifted the condition that enhance members were required as part the Casino approval. Subsequently, the funding seized and the members were reduce through attrition.

The Cold Lake RCMP detachment will be launching the Lakeland Crime Reduction Task Force (funded I.D. 349 via the Municipal District of Bonnyville). The process of establishing the RCMP task force and hiring positions takes time however we believe in the coming months, this unit will be standing up. We understand that this taskforce will include 3 additional RCMP members and administration support.

Subject to City Council passing the 2020 Budget the following initiatives has been supported:

- The City will be adding another RCMP member increasing the total to 28 RCMP Members (18 municipal and 10 provincial/rural).
 - 24 RCMP Members (inclusive of supervisory)
 - 3 General Investigations Section (GIS)
 - 1 Police Dog Services (PDS)
- \$90,000 has been included for crime reduction initiatives. This funding will be further deliberated opportunities however, some preliminary discussion have ensued on hours of operations of the City's Community Peace Officer Program (CPO's);
- \$200,000 has been included in the 2020 draft budget for lighting replacement and enhancements along mainstreet in Cold Lake South; and
- \$120,000 has been included for the implementation of surveillance camera's in strategic locations throughout the City.
- The City is developing a plan for visiting commercial property owners (increasing presence) throughout the community thru its CPO Program.
- The RCMP Police Dog Service (PDS) will continue to be funded. Attached are the stats for the Cold Lake Detachment RCMP PDS which is a borderless regional crime reduction initiative provided by the City of Cold Lake.

The City of Cold Lake has also successfully schedule a meeting with the Minster of Justice Doug Schweitzer in the coming weeks.

Alternatives:



At this time, administration is not presenting any alternatives on this matter for Council's consideration.

Recommended Action:

That the Corporate Priorities Committee of Council accept the report as information.

Budget Implications (Yes or No):

No

Submitted by:

Kevin Nagoya, Chief Administrative Officer



STAFF REPORT

Title: Request for Increased Security - January 14, 2020 Delegation

Meeting Date: *Jan. 28*
~~February 18~~, 2020

Executive Summary:

Ms. Eleanor Evans and numerous business owners attended the January 14, 2020 regular meeting of Council as a delegation.

Ms. Evans brought forth concerns of the safety and security of Cold Lake citizens, businesses and properties, and the cost of the criminal activity affecting such, and requested an increase in security to curb the ongoing criminal activity which is having a very frightening impact on the City.

At the time of agenda preparation and prior to the start of the Council meeting, the following businesses were slated to attend as a testament to the severity of the situation:

- A & W - Phil
- Airway Motel - Shawn Motijevit/Joanne Schurman
- Alberta Treasury Bank - Ryan
- Best Western/Holiday Inn - Mark Lee
- Bliss Lingerie - Eleanor Evans
- Bordeleau Cabinetry - Bruce Bordeleau
- Boston Pizza - Lynn
- Broad Street Properties
- CANA - Nicolas/Irene
- CIBC Bank - Rob Brassard
- Citizens on Patrol - Renee Lillico
- Cold Lake Ford - Mark Milliken
- Cold Lake Mosque
- Collision Towing
- Communications Cold Lake - Michelle
- Continental Cabs - Kevin
- Co-operators Insurance - Dixon Neihaus
- Corks and Caps - Sharine Leiper



- D.D. Construction - Dean
- Extra Foods - Lorraine
- Furniture Galaxy - Murray Murphy
- Hamels - Greg Hamel
- Husky Gas - Paul Lee
- J.D. Collision - Joel
- Kia Motors - Don Milliken
- Kings Court - Karlene Cozun
- Lakeland Connect - Michael
- Lakeland Credit Union - Susan
- Lakeland Inn/El Lobo Motel - Andre de Beer
- Mach 1 Sports - Ed/Laurie
- Muse Fashions - Candace
- O2's - Brett Mckernan
- O.K. Tire - Nikki/Derek
- Polished Pumpkin - Jamie Bateman
- Reality Executive - Bev Howarth
- Red Rooster - Betty Vieira
- Riders Connection - Tony Welsh
- Royal Bank
- Royal LePage - Joanne
- Royal Travel - Connie Cripps
- Smart Electric - John Smart
- Sobeys Food - Scott & Rhonda Squires/Brad McDonald
- Sobeys Liquor - Judy
- Sugar Wings - Cynde Hardwich
- T&T Optical - Michelle Fehr
- TD Bank - Terry Melnyck
- TNT Fashions - Gaye Harrie
- The Brick - Paula
- The Pour House - Rob
- Value Drug Mart - Bob Mattice
- Value Drug Mart - Ron Mattice
- Value Master Homes - Grant/Cheryl



Ms. Evans advised that up until now, many businesses have been reacting to criminal activity, at a huge expense, by installing cameras, alarm systems, lights, barriers, gates, bars, fences, etc. and bearing the increasing cost of insurance. The safety and security of Cold Lake citizens needs to become a number one priority, and there have been enough studies done by communities facing similar situations that have shown the following steps to be effective by reallocating or using City emergency funds to:

- hire security - more "boots on the ground",
- provide nightly patrols - twenty-four (24) hours a day,
- focus on "hot" spots,
- implement neighbourhood Watch Programs,
- establish a community awareness campaign with a phone number to report suspicious activity,
- have schools promote a sense of pride in community (teach our children community responsibility),
- get to know your neighbours and let them know if you are impacted by crime,
- use local media to focus attention and report crime, as well as inform the public about the steps the City is taking to remedy the situation,
- have the City and the Chamber of Commerce diligently lobby the Provincial Government for increased penalties for criminals,
- and schedule a town hall meeting before January 30, 2020 including the RCMP and Council to address private citizen's concerns.

Ms. Evans noted that local resources should be used and provided suggestions that possibly retired military personnel could be used for patrols, vagrancy tickets could be issued, contact Cold Lake Communications regarding the installation of lights and cameras (our local IT citizens have a lot of skills that could be used).

Ms. Evans stated that herself and the other businesses in attendance understand that the City is facing a financial shortfall; therefore, it is imperative that priorities be re-adjusted to reflect the urgent need for more safety in the City of Cold Lake as crime has increased by 44% in one (1) year, and now Cold Lake is in the top twenty (20) for crime in Canada.

Ms. Evans stressed that time is of the essence; it is critical that actions are taken immediately, and businesses want "boots on the ground" by February 15, 2020.



Extensive discussion and questions ensued from Council at this time.

It was noted that the RCMP will be holding a Rural Crime Town Hall Meeting at the Ardmore Hall on Wednesday, January 15, 2020 starting at 7:00 p.m. There will be a panel consisting of representatives from the MLA's office, Municipality of Bonnyville leadership, RCMP, MD Public Safety, and the Crown Prosecutor's office. The representatives from these groups will provide a brief presentation followed by a general question and answer session with members of the public in attendance.

Ms. Marsha Hayward, an attendee in the gallery, advised of a particular criminal activity event that took place at Crane Lake in 2005 and what the neighbouring residents did to make their community a more secure, safe place to live (i.e. created a Facebook page, learned to become more descriptive, learned to take more photos, etc.). Ms. Hayward encouraged everyone present to attend the Rural Crime Town Hall Meeting in Ardmore, and to participate in the discussion about crime and policing in rural Alberta.

Deputy Mayor Vining thanked Ms. Evans for her presentation and also thanked the many business owners seated in the gallery for their attendance, advising that Council would consider the request at the next regular meeting of Council being January 28, 2020.

Initial administrative follow-up:

In consultation with the RCMP, February 26, 2020 has been already been tentatively scheduled for a community meeting relating to policing. This schedule is subject to the scheduling and availability of important guests. Administration is scheduled to meet Monday January 27, 2020 to confirm dates and topics.

Background:

At Council's January 28, 2020 regular meeting of Council, Council resolved to accept the January 14, 2020 delegation as information and to refer the issue to the February 18, 2020 Corporate Priorities Committee meeting.

Alternatives:

Recommended Action:

That Council ...



Budget Implications (Yes or No):

No

Submitted by:

Kevin Nagoya, Chief Administrative Officer



City of Cold Lake

Delegation Application

To: The Office of the Chief Administrative Officer

I/We, Eleanor Evans (780) 813-1437 I/We, _____

(Name)

(Telephone Number)

(Name)

(Telephone Number)

Mailing Address Box 607, 5010-50 Ave. Cold Lake, AB T9M 1P2

E-mail Address blisslingerie2@yahoo.com

request to appear as a delegation before Cold Lake City Council at a meeting to be held on JANUARY 14, 2020.

*Please Note: In the event of several delegations, please indicate an alternate date or you will be assigned to the next available meeting.

The purpose of the delegation is to present the following: (see reverse for requirements)

• A copy of all information regarding the topic must accompany the application.

Topic: the safety & security of Cold Lake citizens, businesses & property.

Request: An increase in security to curb the ongoing criminal activity.

* Where the subject matter of a delegation pertains to legal matters, personnel, and/or private property issues, the City of Cold Lake reserves the right not to hear such delegations.

I/We acknowledge that only the above matter will be discussed during the delegation.

Signed [Signature] Date Jan 8/2020

Signed _____ Date _____

Return completed application to the City of Cold Lake

5513-48 Avenue, Cold Lake, AB T9M 1A1

Phone: (780) 594-4494 Ext. 7967

Fax: (780) 594-3480

Email: creimer@coldlake.com

Form 11-00-06

FOR INTERNAL USE ONLY

Request Approved by [Signature]

Date Approved for JAN. 14/20

cc: _____

☐ Other

Information on this form is collected for the sole use of the City of Cold Lake and is protected under the authority of the Freedom of Information and Protection of Privacy Act, Sec. 33 (c) which regulates the collection, use and disclosure of personal information.

Received Fax: 08 Jan 20 16:44
Jan. 8. 2020 3:15PM

City of Cold Lake
Received by: Bliss Lingerie

No. 2622 P. 2/2

page 2

p.1

7805946767

Bliss Lingerie

Jan 20 11:09





To: City of Cold Lake Mayor and Council

Date: January 8, 2020

Re: January 14, 2020 Council Meeting Agenda

Please add this urgent addition to the Agenda of the above mentioned meeting.

It's regarding the safety and security of Cold Lake citizens, businesses and properties and the cost of the criminal activity affecting us.

The following business owners and citizens will be in attendance:

Best Western/Holiday Inn	Mark Lee
Bliss Lingerie	Eleanor Evans
Bordeleau Cabinetry.	Bruce Bordeleau
CIBC Bank.	Rob Brassard
Coldwell Banker/Reality Executive.	Bev Howarth
Cold Lake Ford.	Mark Milliken
Co operators Insurance.	Dixon Neihaus
Citizens On Patrol	Renee Lillico
Corks and Caps.	Sharine Leiper
Extra Foods.	Lorraine
Furniture Galaxy.	Murray Murphy
Kia Motors.	Don Milliken
Lakeland Connect.	Michael
Lakeland Credit Union.	Susan
Lakeland Inn/El Lobo Motel.	Andre de Beer
Mach 1 Sports.	Ed/Laurie
O2'z	Brett Mckernan
Polished Pumpkin.	Jamie Bateman

Red Rooster.

Royal Travel.

Sobeys Foods.

Sobeys Liquor.

Sugar Wings.

T D Bank.

T&T Optical.

Value Drug Mart.

Value Drug Mart.

Betty Vieira

Connie Cripps

Scott & Rhonda Squires/Brad Mc Donald

Judy

Cynde Hardwick

Terry Melnick

Michelle Fehr

Ron Mattice

Bob Mattice



January 14, 2020

To: City of Cold Lake

Attn: Cindy

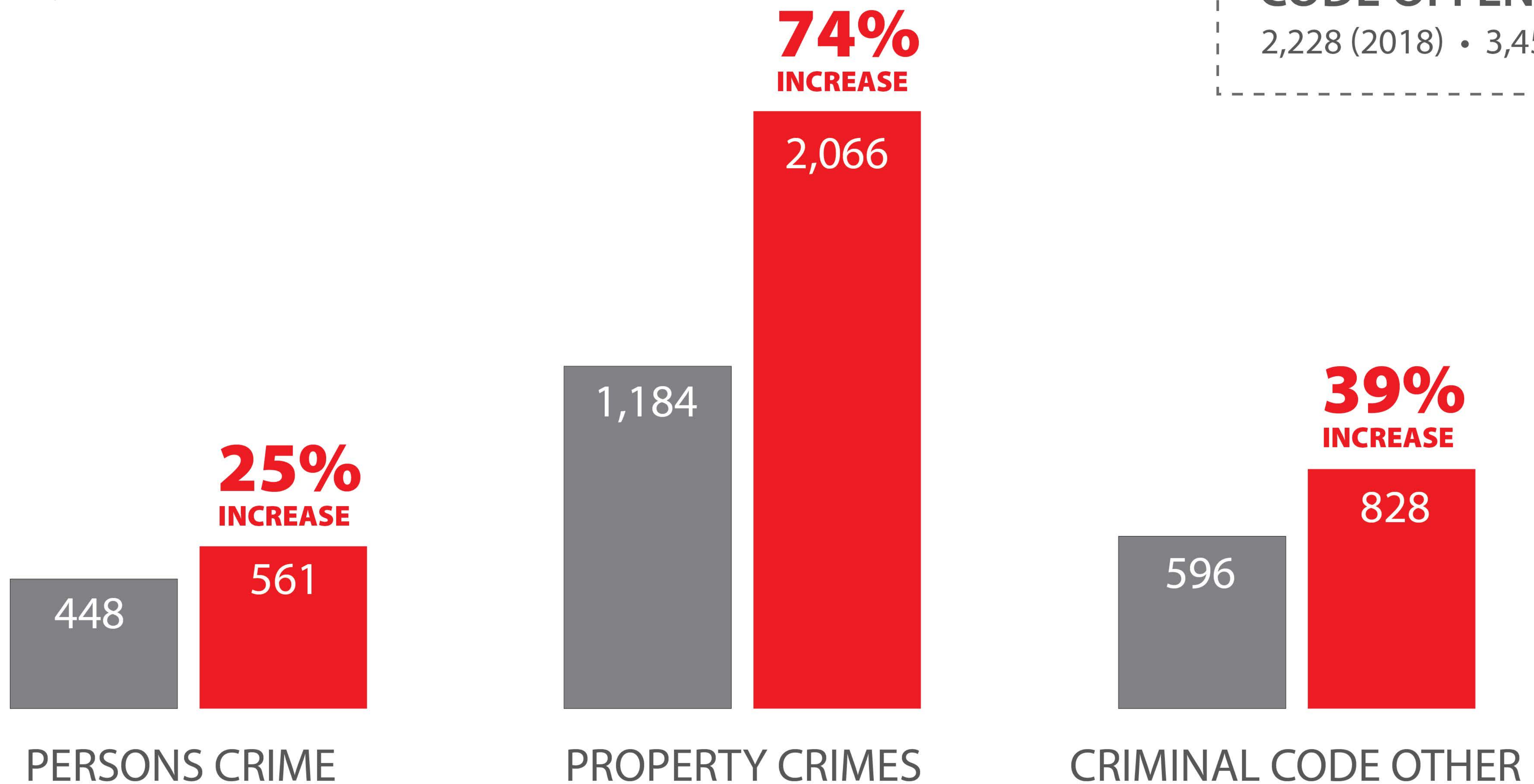
Please add the following to the list of people who will be attending tonight's meeting.

The Brick.	Paula
Cold Lake Mosque	
CANA	Nicolas/Irene
Hamels.	Greg
A&W.	Phil
Muse Fashions.	Candace
OK Tire.	Nikki/Derek
Boston Pizza.	Lynn
Royal Lepage.	Joanne
Value Masters Homes.	Grant/Cheryl
Alberta Treasury Bank.	Ryan
Royal Bank	
Broad Street Properties	
TNT Fashions.	Gaye Harris
Kings Court.	Karlene Cozun
The Pour House.	Rob
Husky Gas.	Paul Lee
Riders Connection.	Tony Welsh
Airway Motel.	Shawn Motijevit/ Joanne Schurman
Communication Cold Lake.	Michelle
D.D. Construction.	Dean
J D Collision.	Joel
Collision Towing	
Continental Cabs.	Kevin
Smart Electric.	John Smart

COLD LAKE MUNICIPAL CRIMINAL CODE OFFENCES

*This chart depicts criminal code offences
within the City of Cold Lake.*

■ 2018
■ 2019



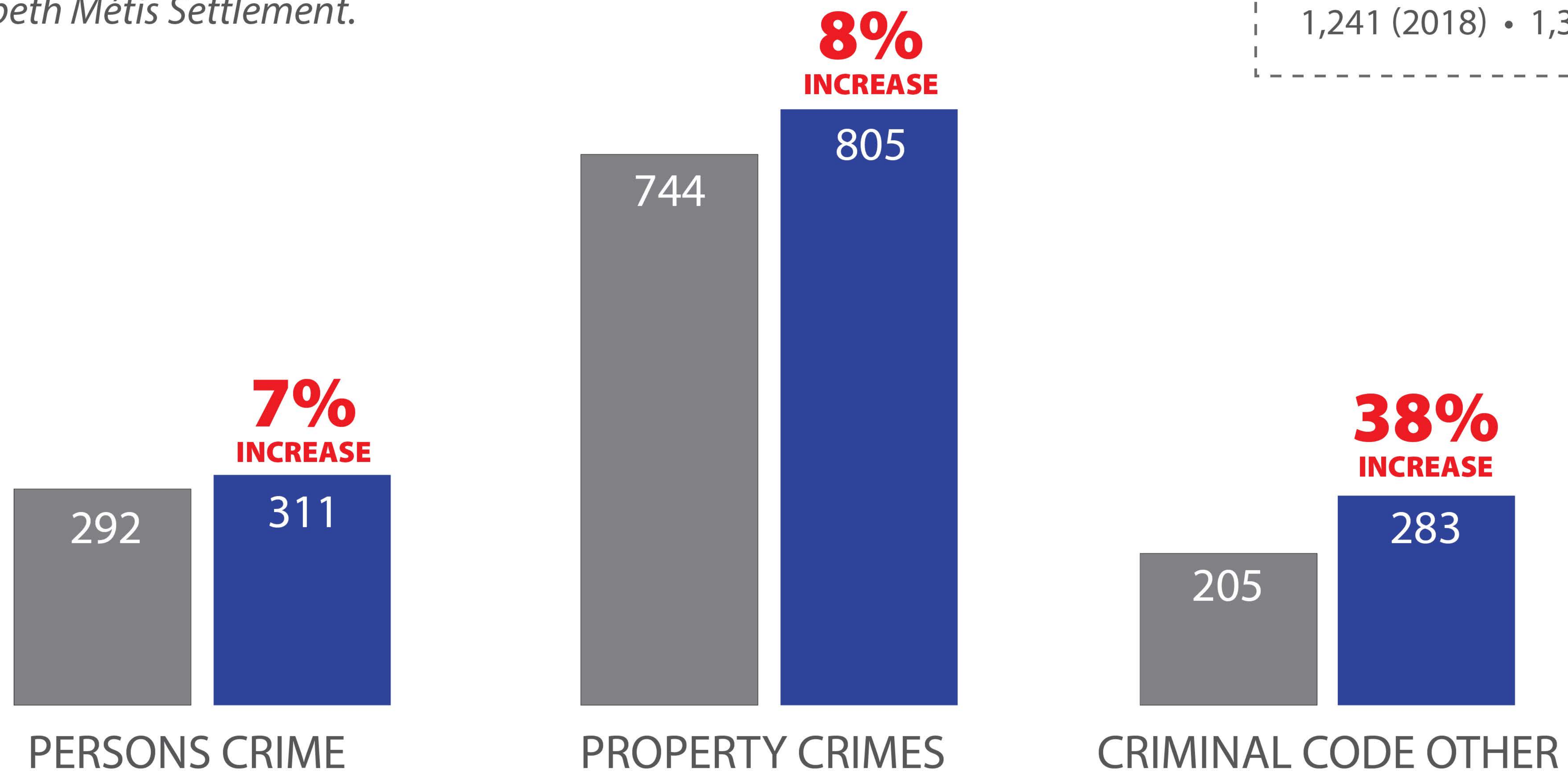
55%
INCREASE

**TOTAL CRIMINAL
CODE OFFENCES**
2,228 (2018) • 3,455 (2019)

COLD LAKE PROVINCIAL CRIMINAL CODE OFFENCES

This chart depicts criminal code offences within the Municipal District of Bonnyville, Cold Lake First Nations, and Elizabeth Métis Settlement.

■ 2018
■ 2019



13%
INCREASE

**TOTAL CRIMINAL
CODE OFFENCES**

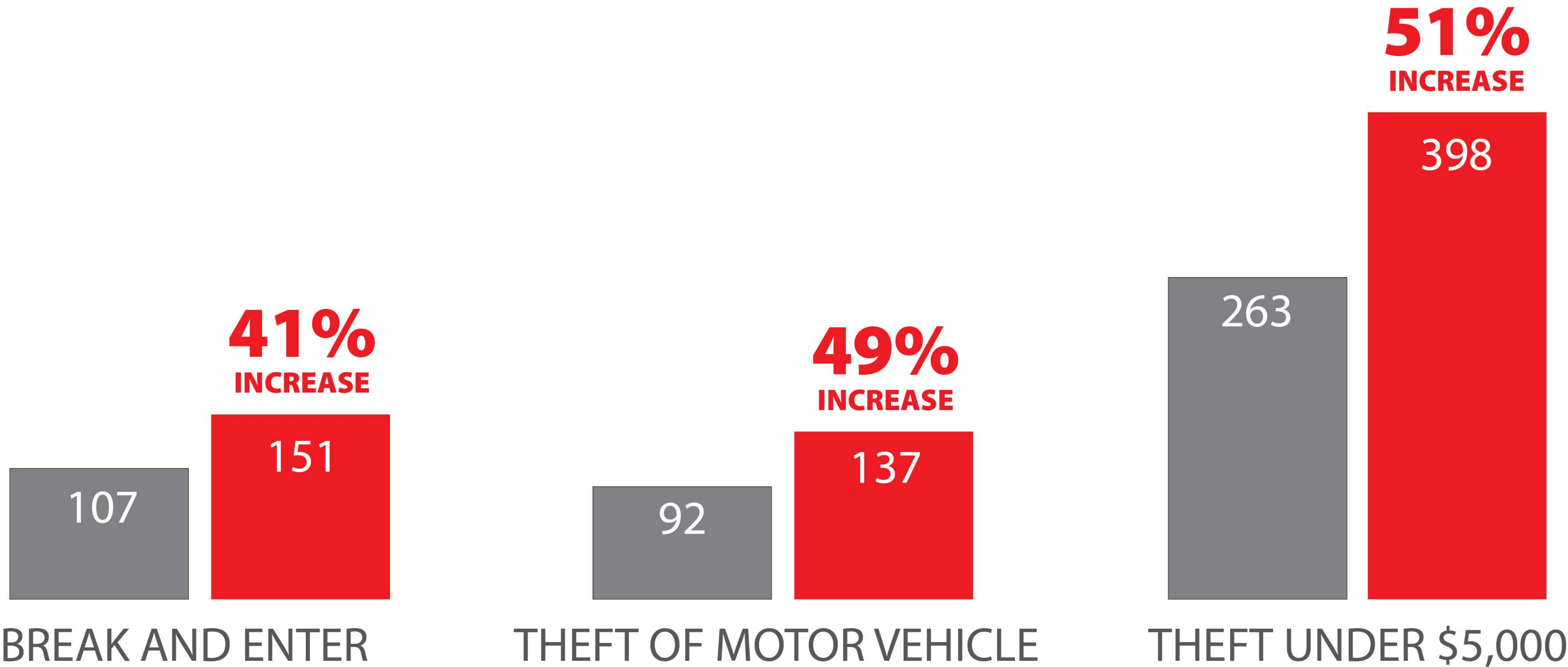
1,241 (2018) • 1,399 (2019)

COLD LAKE MUNICIPAL PROPERTY CRIME

This chart depicts select property crimes within the City of Cold Lake.

■ 2018
■ 2019

74%
INCREASE
TOTAL PROPERTY CRIMES
744 (2018) • 805 (2019)

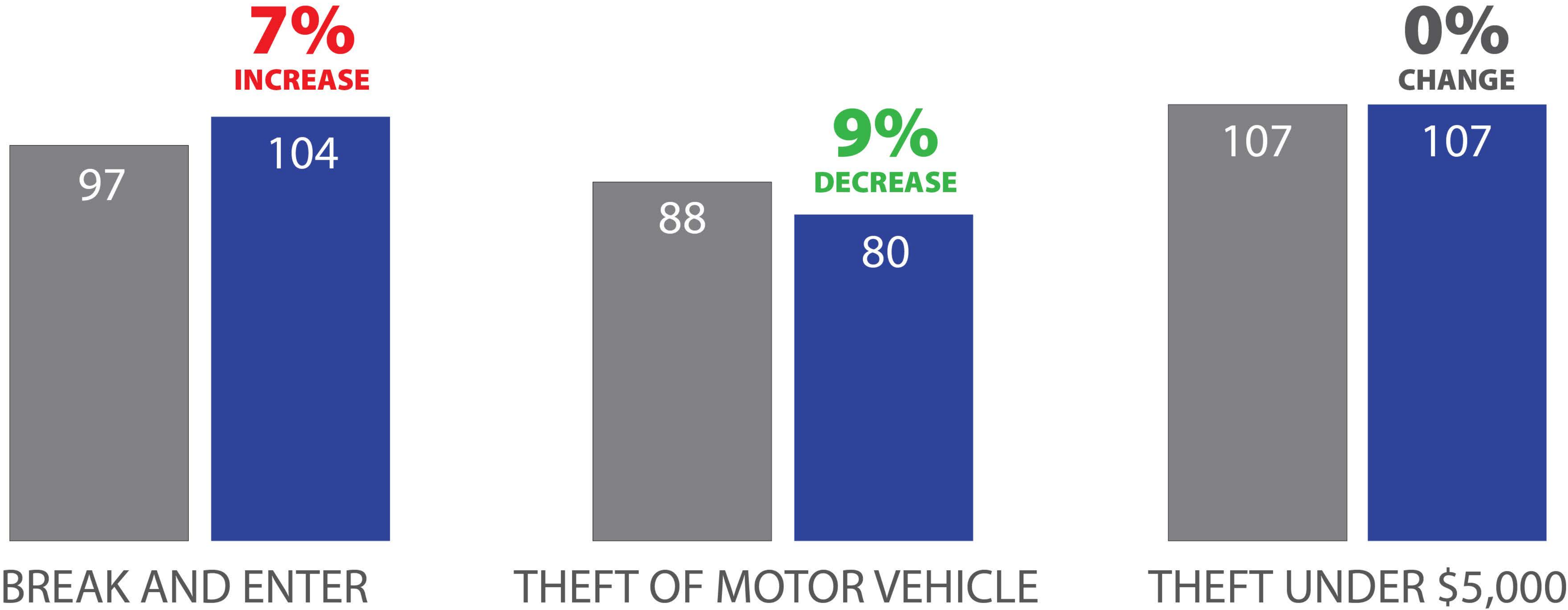


COLD LAKE PROVINCIAL PROPERTY CRIME

*This chart depicts select property crimes within the
Municipal District of Bonnyville, Cold Lake First Nations,
and Elizabeth Métis Settlement.*

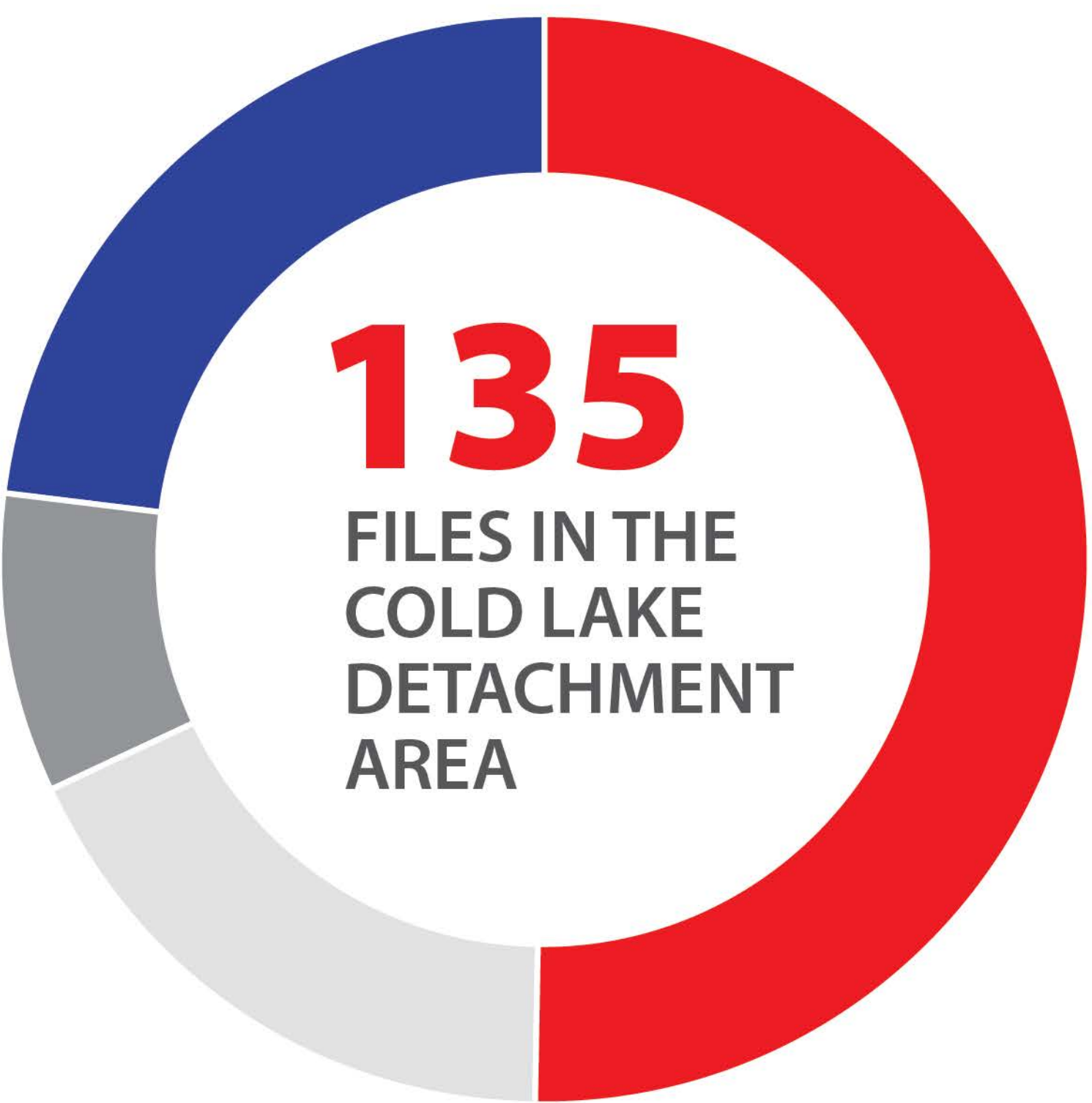
■ 2018
■ 2019

8%
INCREASE
**TOTAL PROPERTY
CRIMES**
744 (2018) • 805 (2019)



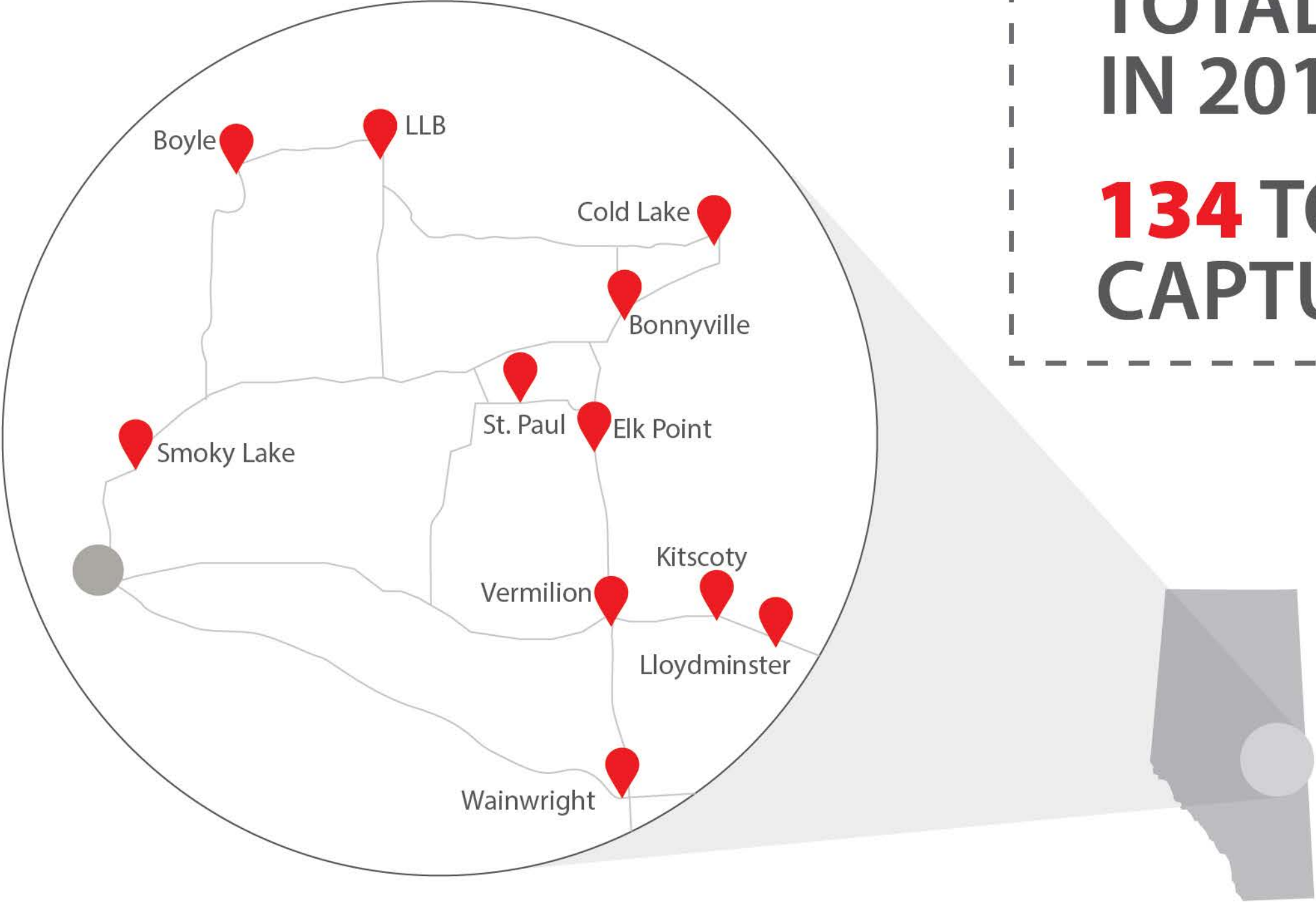
COLD LAKE RCMP POLICE DOG SERVICE

This chart depicts the involvement of the PDS Service in the City of Cold Lake and surrounding area.



43
CAPTURES IN
COLD LAKE

68 CITY OF COLD LAKE **24** ELIZABETH METIS SETTLEMENT
31 COLD LAKE RURAL **12** COLD LAKE FIRST NATIONS



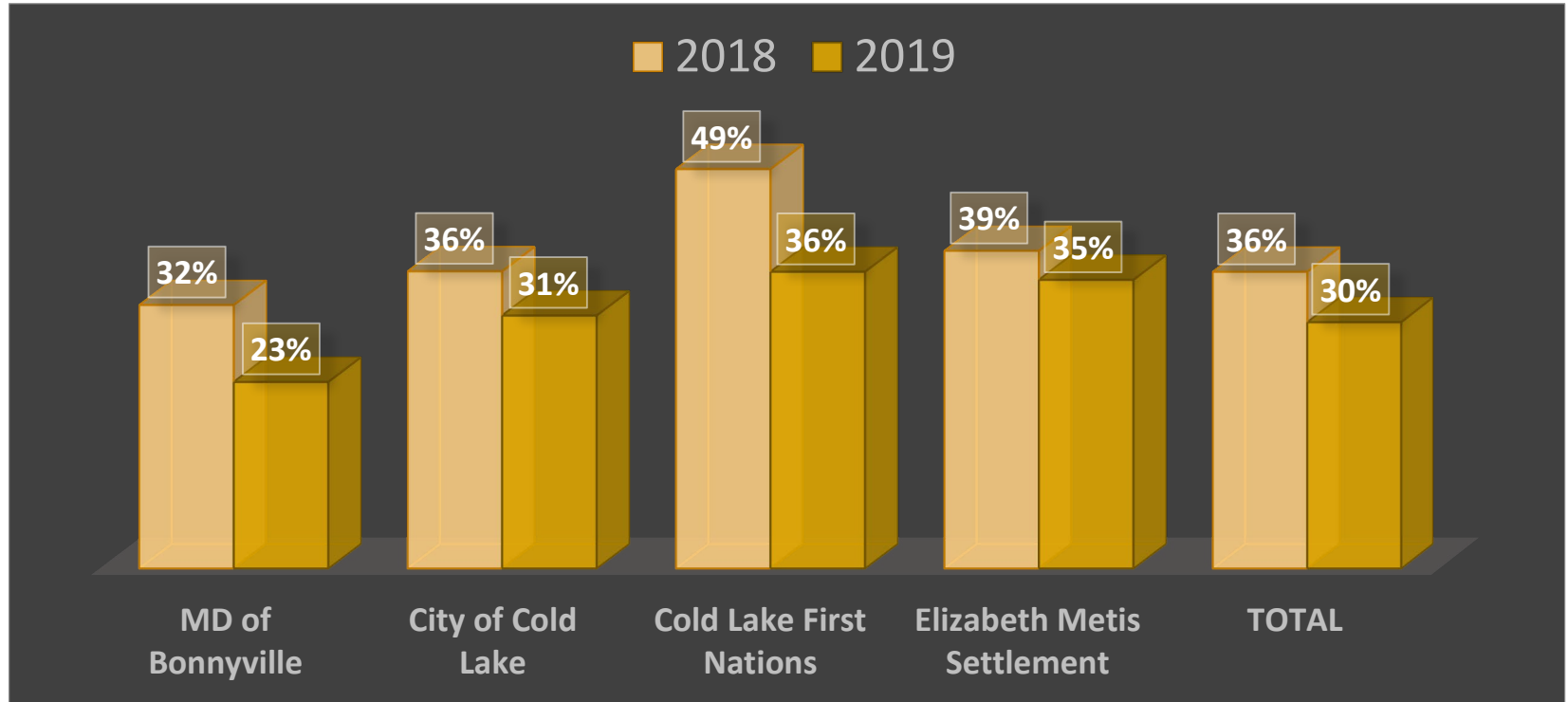
333
TOTAL FILES
IN 2019
134 TOTAL
CAPTURES

TOTAL FILES IN 2019 FOR EACH DETACHMENT (TOWN & RURAL)

COLD LAKE 135	VERMILION 7
ST. PAUL 52	SMOKY LAKE 4
ELK POINT 43	WAINWRIGHT 3
BONNYVILLE 38	KITSCOTY 2
LAC LA BICHE 20	LLOYDMINSTER 3
BOYLE 11	OUTSIDE EAD (SASK/WAD) 15

COLD LAKE DETACHMENT

Percentage Cleared



COLD LAKE MUNICIPAL
CALLS FOR SERVICE
2019

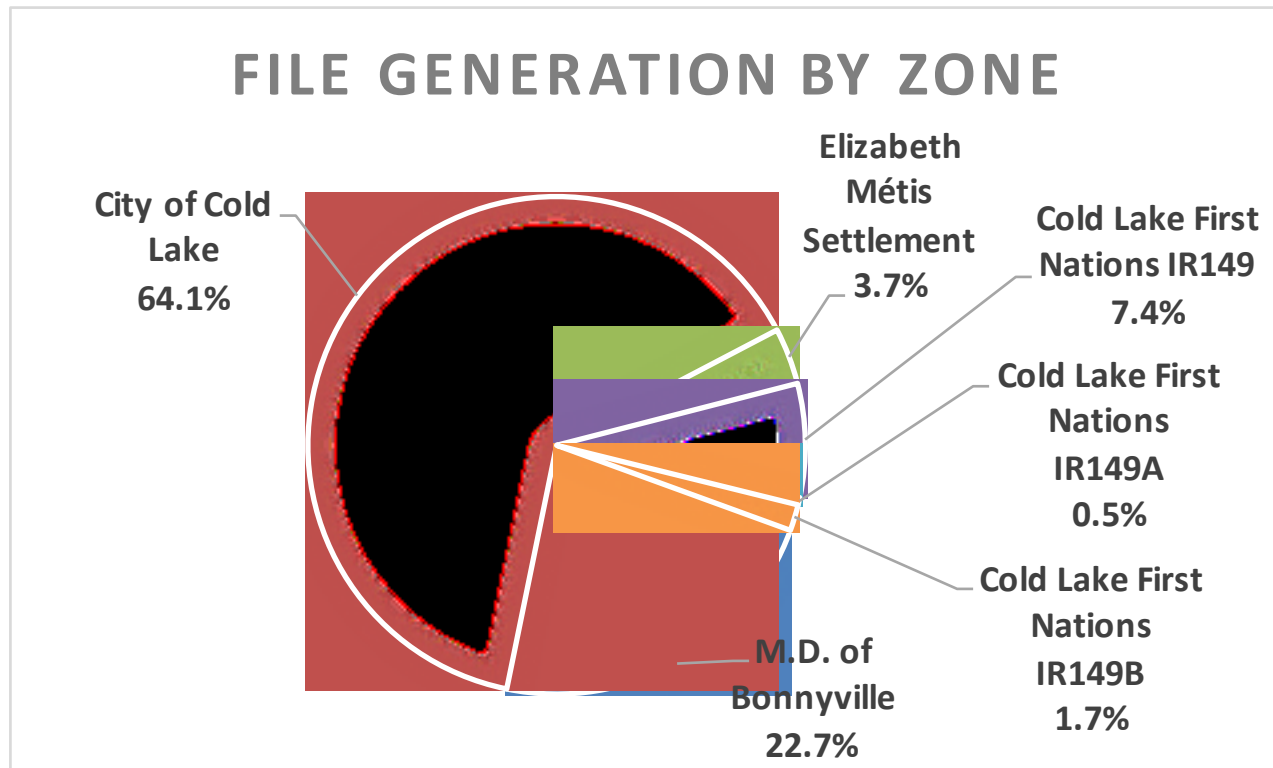
	ACTUAL	CLEARED BY CHARGED	CLEARED OTHERWISE	TOTAL CLEARED	PERCENTAGE CLEARED
OVERALL CALLS	8884	1764	996	2760	31%
PERSONS CRIMES	561	251	63	314	56%
PROPERTY CRIMES	2082	202	371	573	28%
CRIMINAL CODE OTHER	835	474	122	596	71%
IMPAIRED OFFENCES	138	46	4	50	36%
DRUG OFFENCES	69	31	6	37	54%

COLD LAKE MUNICIPAL
CALLS FOR SERVICE
2018

	ACTUAL	CLEARED BY CHARGED	CLEARED OTHERWISE	TOTAL CLEARED	PERCENTAGE CLEARED
OVERALL CALLS	7000	1798	767	2565	37%
PERSONS CRIMES	482	265	94	359	74%
PROPERTY CRIMES	1192	195	262	457	38%
CRIMINAL CODE OTHER	596	421	90	511	86%
IMPAIRED OFFENCES	96	47	3	50	52%
DRUG OFFENCES	73	17	7	24	33%



Cold Lake Detachment – File Generation by Zone (Location) January 1, 2017 to November 30, 2017





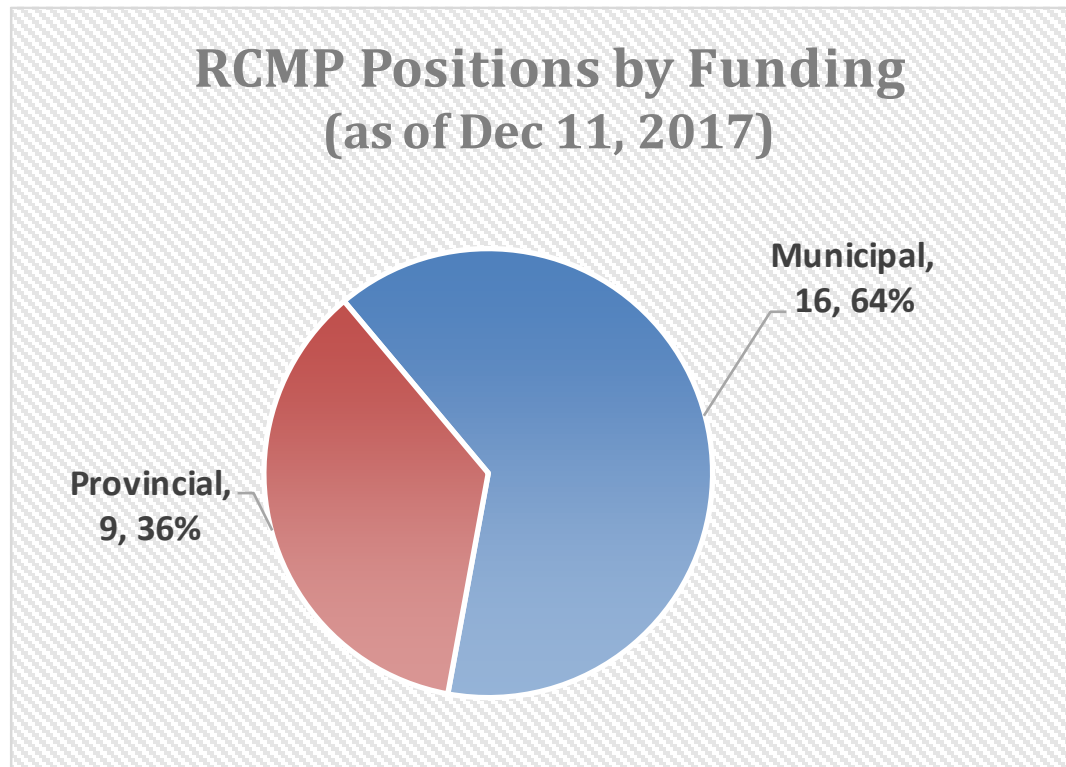
Cold Lake Detachment – File Generation by Zone (Location) 2014 - 2017 (Nov)

% of Files Generated by Zone	2014	2015	2016	2017
City of Cold Lake (CCL)	64%	64%	64%	64%
Elizabeth Métis Settlement (EMI)	4%	4%	3%	4%
M.D. of Bonnyville #87 (MD87)	18%	19%	23%	23%
Cold Lake First Nation #149 (IR149)	10%	9%	8%	7%
Cold Lake First Nation #149A (IR149A)	1%	1%	1%	1%
Cold Lake First Nation #149B (IR149B)	3%	3%	2%	2%



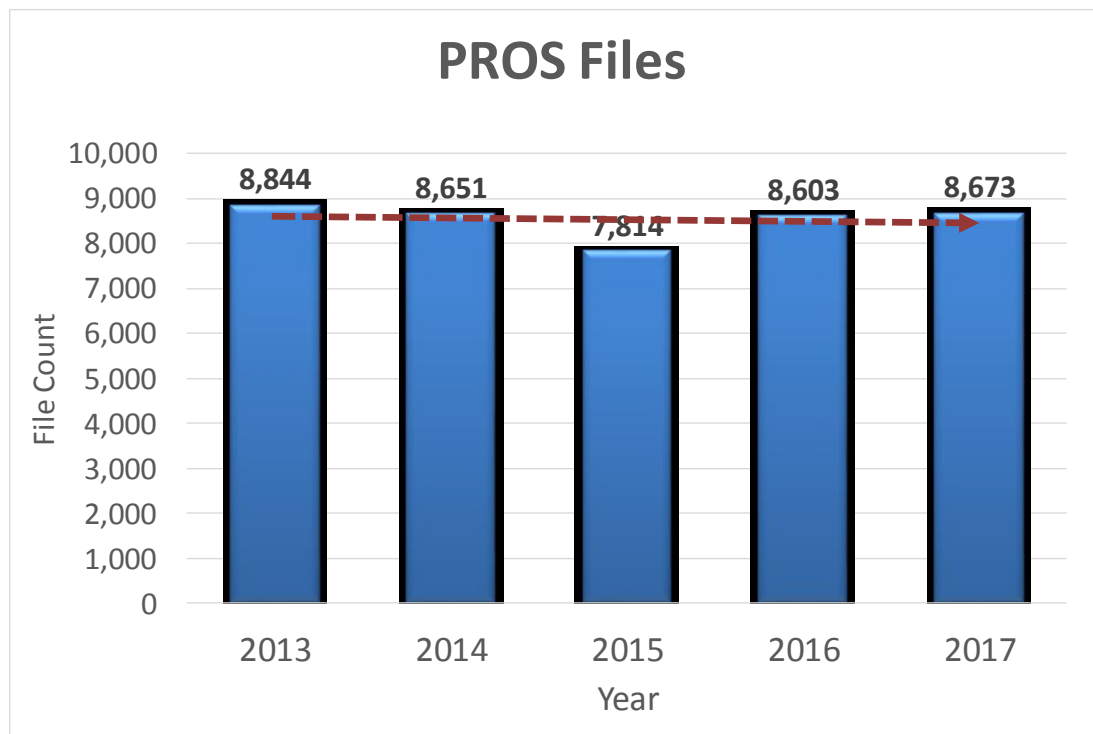


Cold Lake Detachment – Positions by Funding (Municipal vs Provincial)



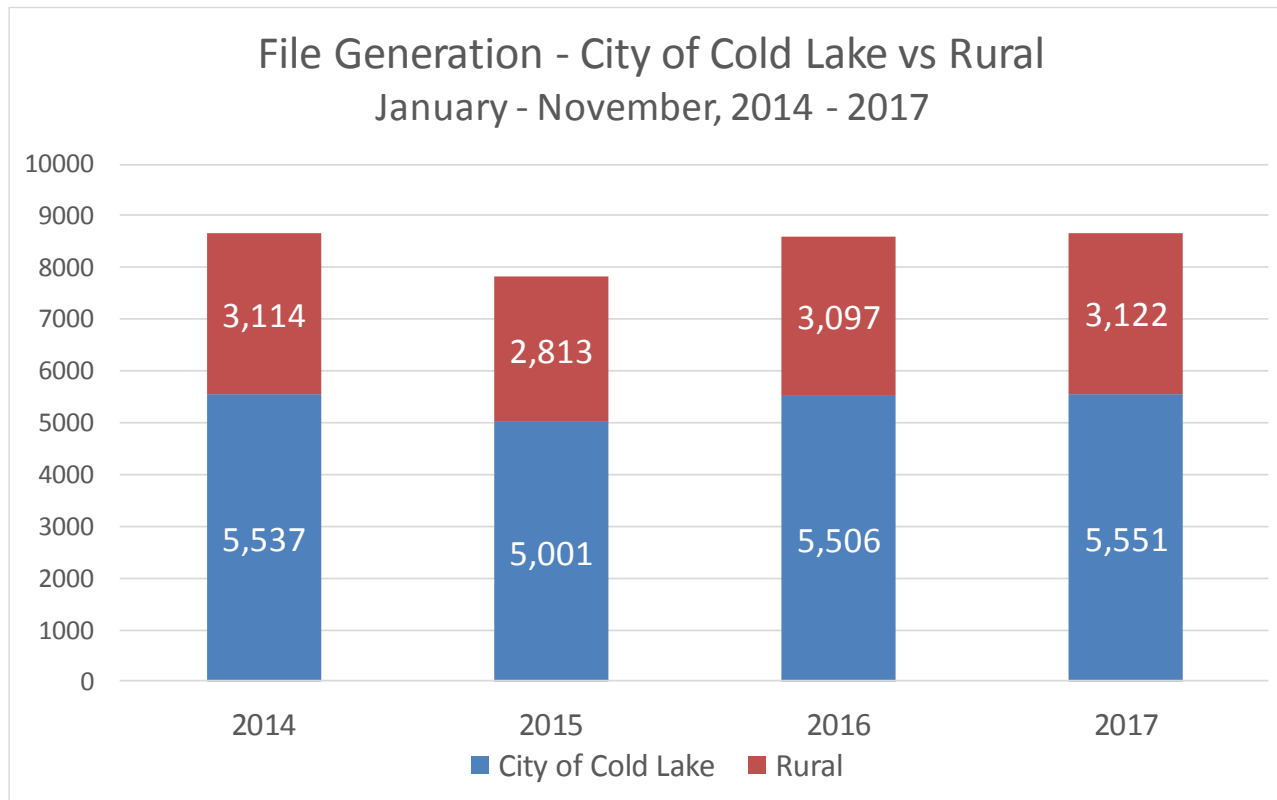


Cold Lake Detachment – File Count by Year (January 1 to November 30 only)



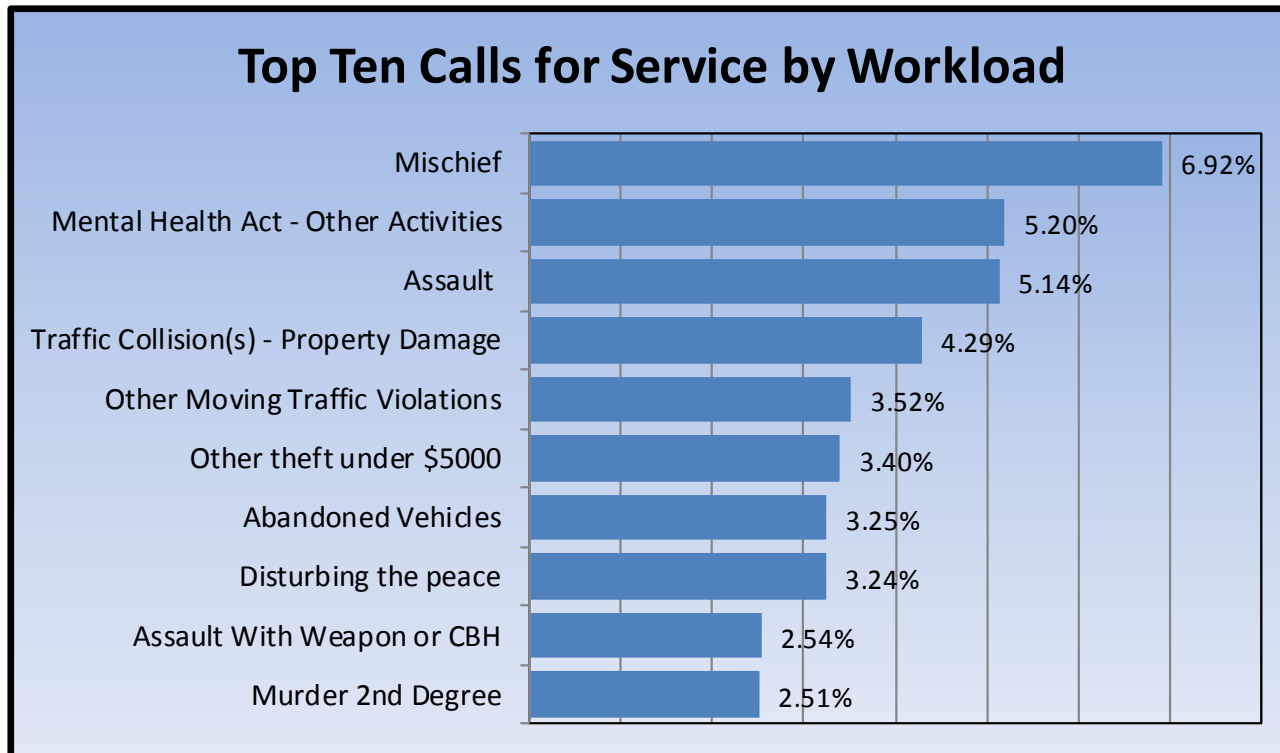


Cold Lake Municipal/Rural – File Counts – January - November





Cold Lake Detachment – Top Ten calls for Service by Workload January 1 – November 30, 2017





Cold Lake Municipal Detachment – Criminal Code Persons

Note: The previous slides were based on file counts.

The following slides are based on the crime(s) that are reported in those files.

(i.e. one file may have two or more crimes involved)

January 1 – November 30 Only

Municipal Detachment Area Only	Trend	2013	2014	2015	2016	2017
Robbery		9	10	7	17	7
Assault		234	203	188	223	219
Uttering Threats		48	71	52	78	69
TOTAL PERSONS		386	345	310	365	388

Due to the number of crime categories, not all categories are broken out in the above chart





Cold Lake Municipal Detachment – Property Crime

January 1 – November 30 Only

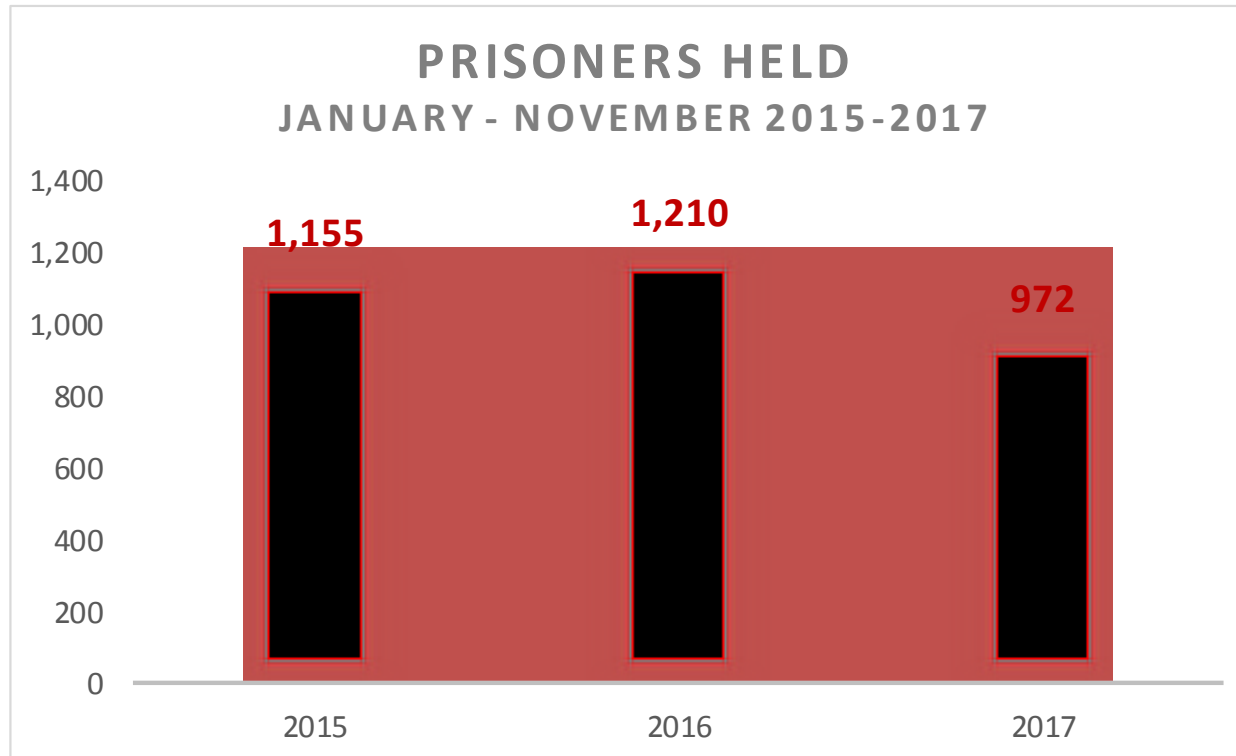
Municipal Detachment Area Only	Trend	2013	2014	2015	2016	2017
Break & Enter		54	55	57	94	110
Theft of Motor Vehicle		90	145	83	148	138
Theft Under \$5,000		339	301	297	382	336
Possn Stn Goods		14	20	28	43	61
Mischief To Property		575	581	602	520	527
TOTAL PROPERTY		1,137	1,157	1,151	1,275	1,285

Due to the number of crime categories, not all categories are broken out in the above chart





Cold Lake Municipal Detachment – Prisoners Held





Recent Significant Events

- On December 6/7, 2017, Cold Lake RCMP with the assistance of Bonnyville RCMP and ALERT executed (5) search warrants on (4) residence and on other locations within the City of Cold Lake. (11) ounces of cocaine, (3) ounces of methamphetamine, (1) pound of cannabis marihuana, (3.2) ounces of Psilocybin (mushrooms) and (12) firearms, some of which were stolen, a taser, brass knuckles and a crossbow were seized along with stolen property being recovered. (7) adults have been charged with (106) offences under the Controlled Drugs & Substances Act and the Criminal Code.
- On November 2, 2017, a Cold Lake male was sentenced to (40) months in jail for trafficking in cocaine and received a lifetime firearms prohibition and an additional (2) years jail consecutive for weapons offences, totalling (5.5) years in jail.
- On October 27, 2017, Cold Lake RCMP charged (4) individuals resulting from a traffic stop where (108) grams of cocaine, (180) grams of marihuana, (50) grams of methamphetamine, a loaded prohibited firearm and cash were seized.
- On October 22, 2017, Cold Lake RCMP charged a male with the homicide of a (16) month old child from Cold Lake who was murdered this past summer in Cold Lake.
- On October 11, 2017, a Cold Lake male was sentenced to (540) days in jail, (12) months probation and a (10) year firearms prohibition for trafficking in cocaine.





Recent Significant Events Continued

- On October 11, 2017, a Cold Lake male was sentenced to (2) years in jail, (12) months probation and a lifetime firearms prohibition for trafficking in cocaine.
- On October 4, 2017, a Cherry Grove male received a (2) year Conditional Sentence Order for possessing marihuana for the purpose of trafficking. A total of (8) pounds of Cannabis Marihuana and (163) grams of hash oil were seized.
- On October 2, 2017, Cold Lake RCMP charged (4) individuals following an armed robbery and B&E to the Ardmore Store where a firearm was discharged during the B&E and a subsequent police pursuit ensued.
- On October 2, 2017, Cold Lake RCMP dismantled a sophisticated identify theft ring where (4) individuals were arrested and charged. In addition, equipment was seized that was being used to make fraudulent credit cards.
- On September 23, 2017, Cold Lake RCMP executed a Search Warrant and recovered (3) stolen boats and additional stolen property valued at over 1,000,000.00.
- On December 15, 2016, a male from Cold Lake received a (2) year jail sentence for possession of cocaine for the purpose of trafficking and a (2) year jail sentence concurrent for possession of methamphetamine for the purpose of trafficking.





Questions?

Thank you!

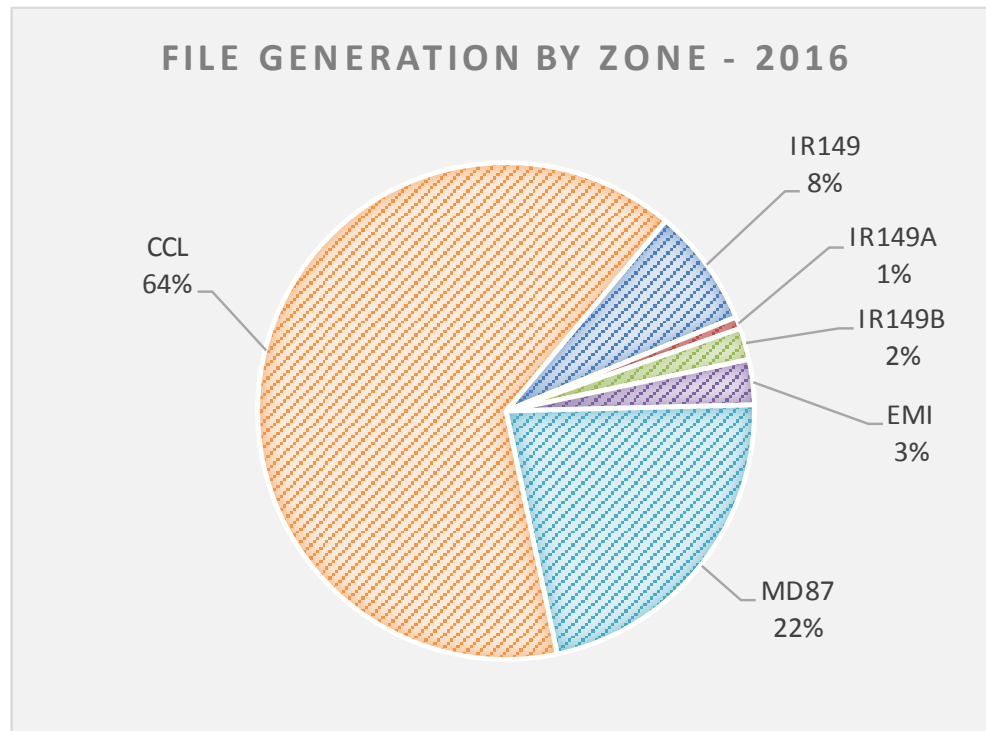
S/Sgt. Jeremie Landry
Detachment Commander
Cold Lake RCMP

2017/12/12





Cold Lake Detachment – File Generation by Zone (Location) 2016





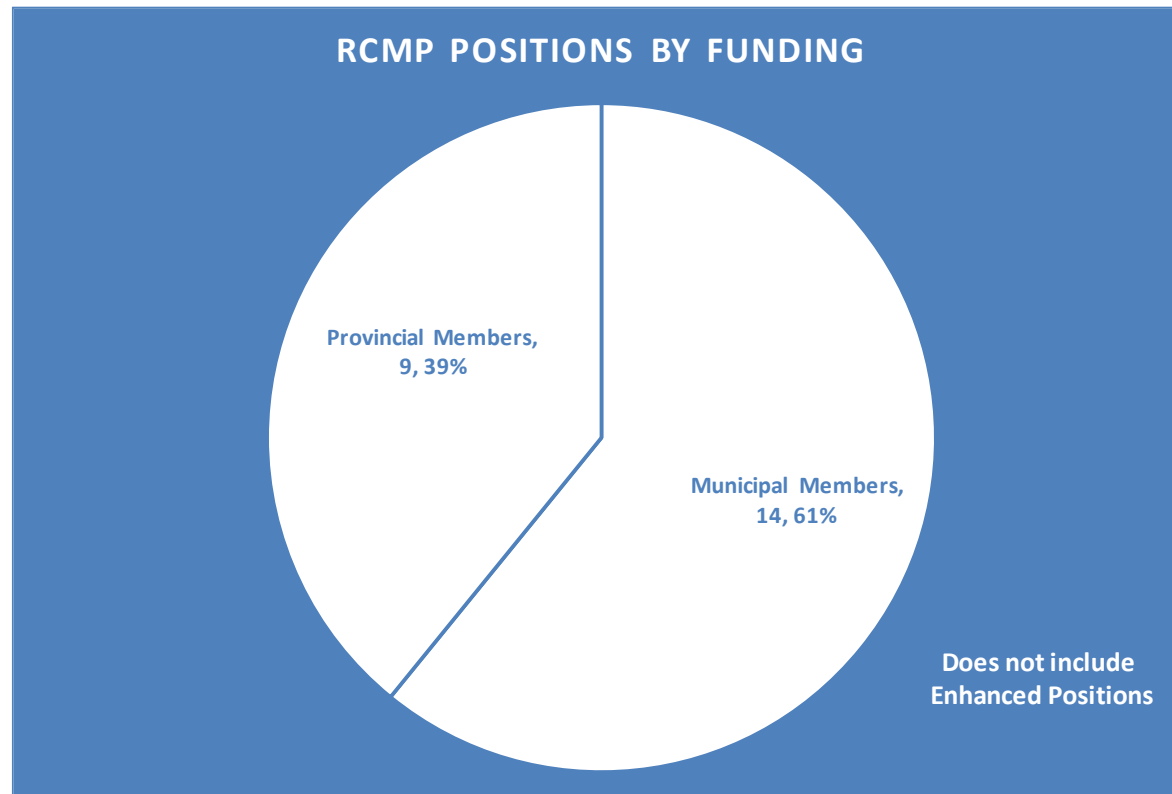
Cold Lake Detachment – File Generation by Zone (Location) 2014-2016

% of Files Generated by Zone	2014	2015	2016
Elizabeth Métis Settlement (EMI)	4%	4%	3%
M.D. of Bonnyville #87 (MD87)	18%	19%	22%
City of Cold Lake (CCL)	64%	64%	64%
Cold Lake First Nations #149 (IR149)	10%	9%	8%
Cold Lake First Nations #149A (IR149A)	1%	1%	1%
Cold Lake First Nations #149B (IR149B)	3%	3%	2%



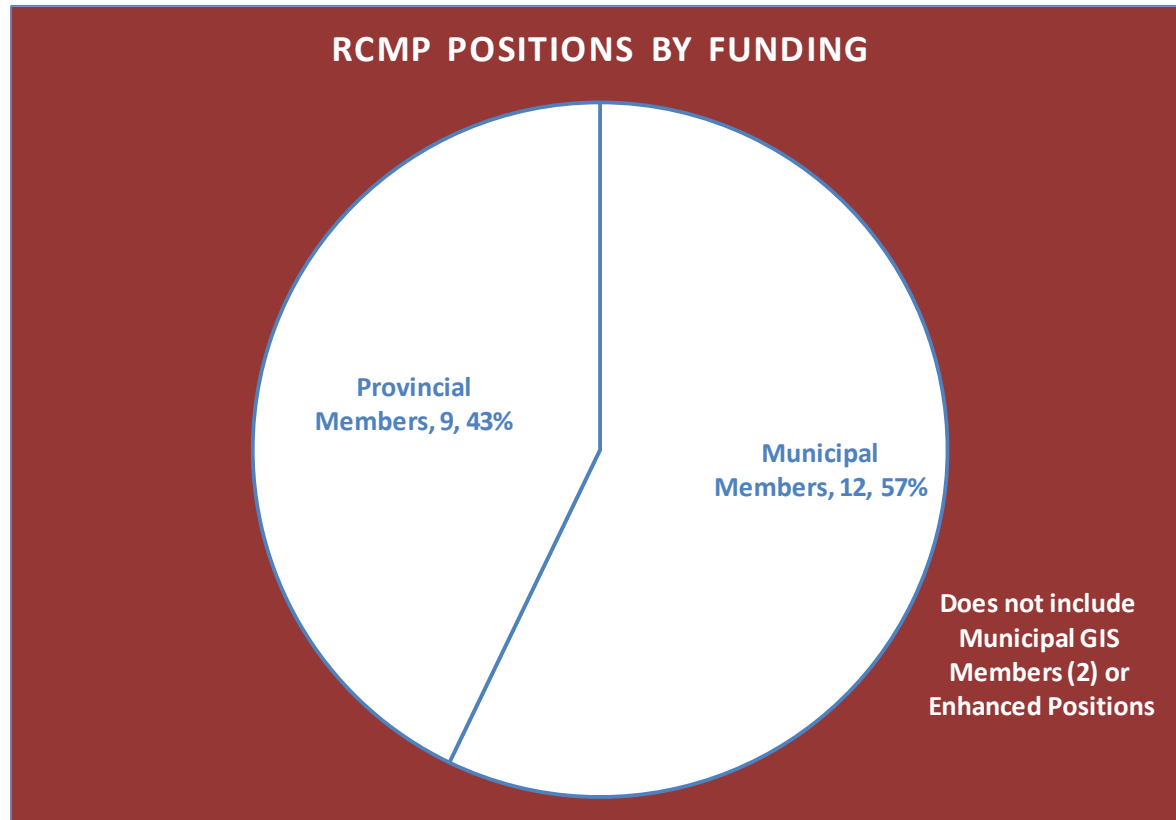


Cold Lake Detachment – File Count by Year 2012 to 2016



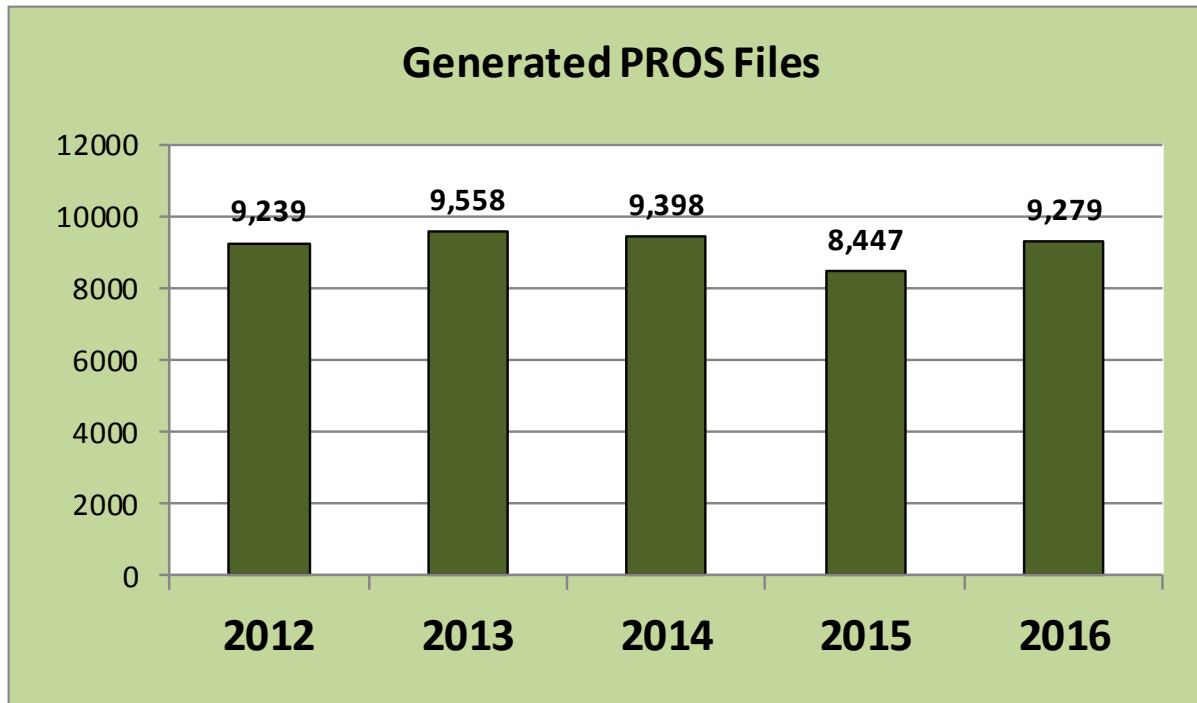


Cold Lake Detachment – File Count by Year 2012 to 2016



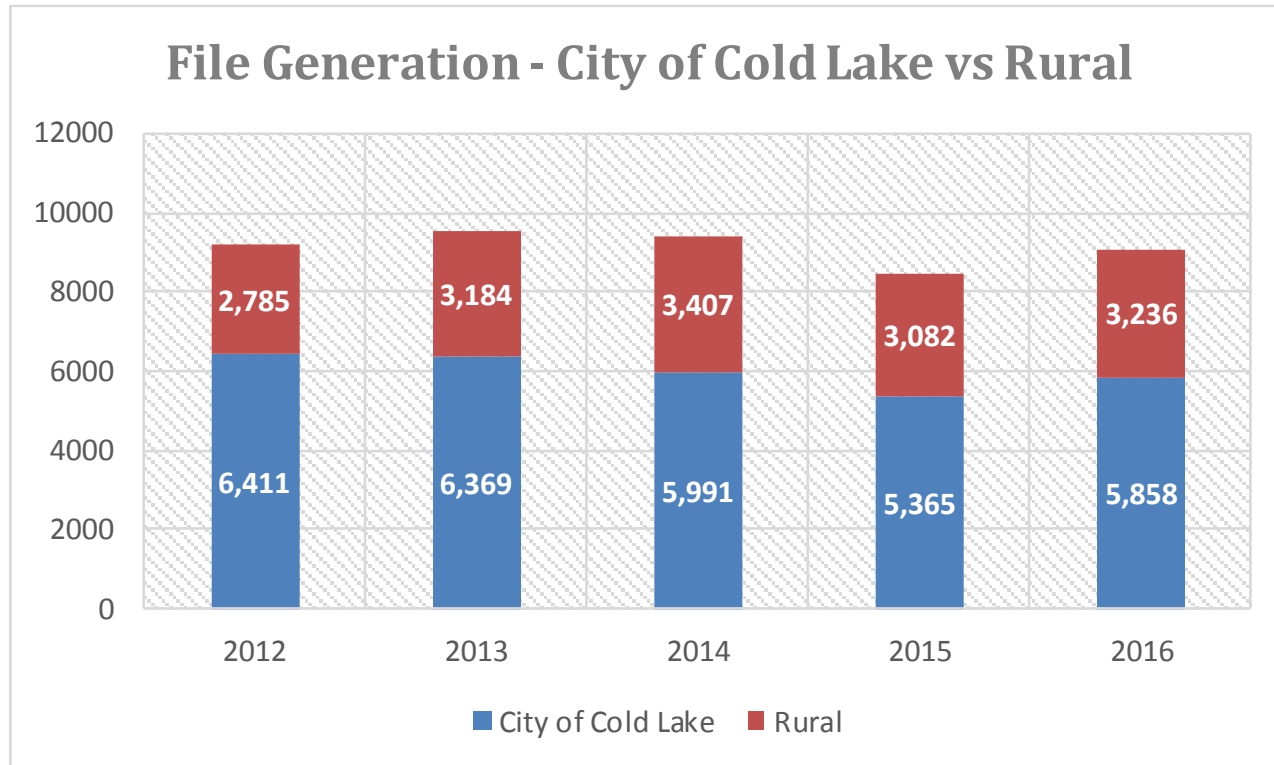


Cold Lake Detachment – File Count by Year 2012 to 2016



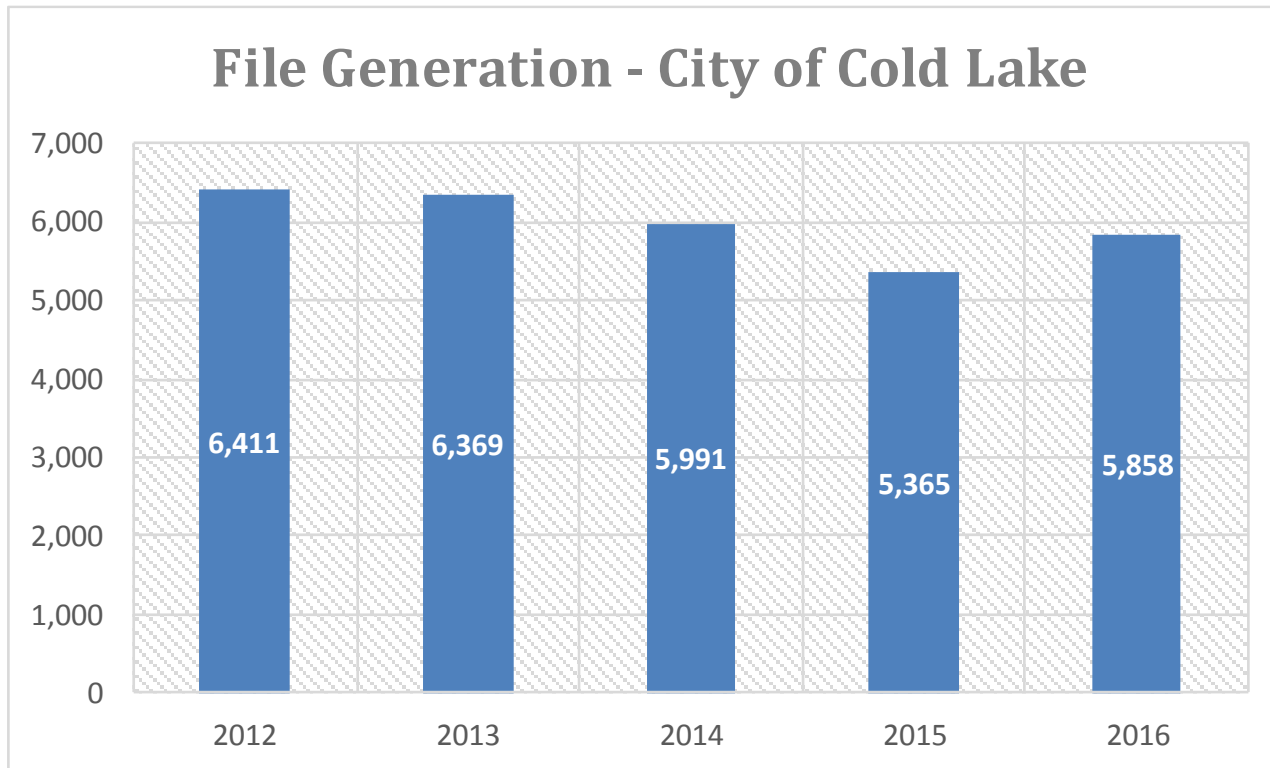


Cold Lake Municipal/Rural – File Count by Year 2012 to 2016





Cold Lake Municipal – File Count by Year 2012 to 2016





Cold Lake Municipal Detachment – Clearance Rates (Incident Based)

CLEARANCE RATES	2013	2014	2015	2016
CC - Persons	81%	78%	82%	86%
CC - Property	39%	39%	42%	36%
CC - Other	69%	105%	65%	65%
TOTAL CRIMINAL CODE	54%	46%	55%	53%

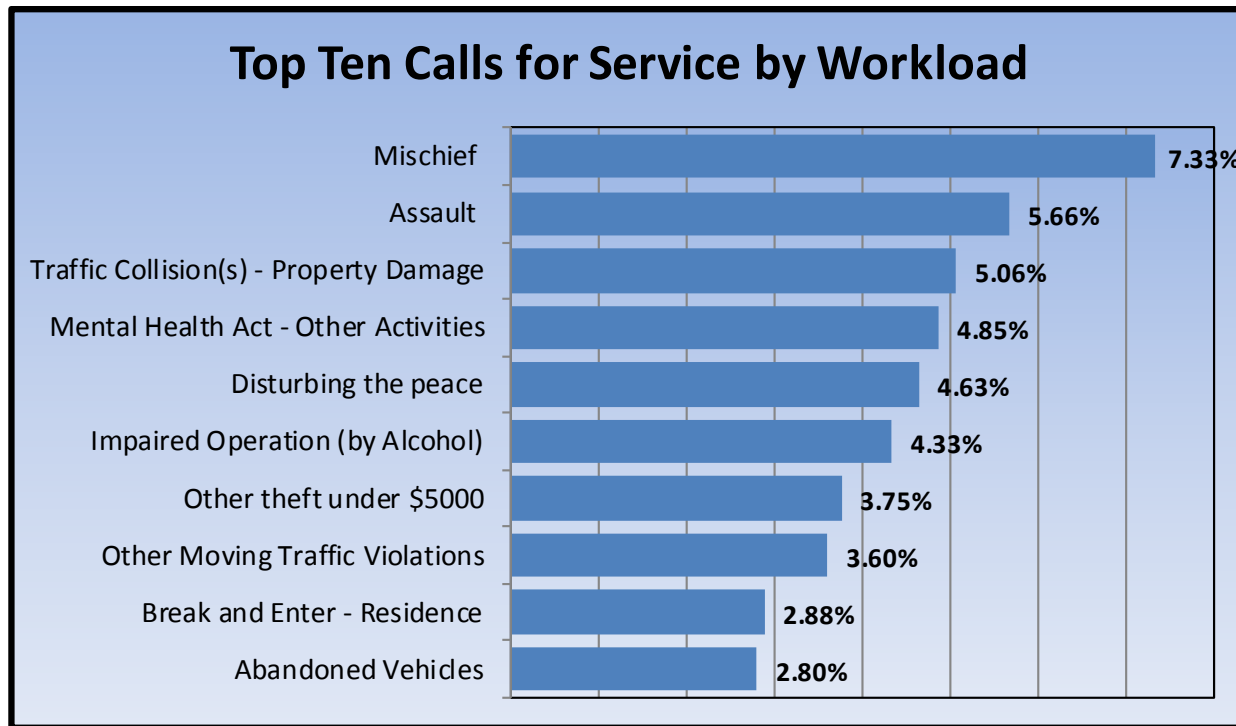
When a police investigation leads to the identification of a suspect against whom a charge could be laid, then that incident can be cleared.

Municipal Division Average Clearance Rates for 2015 were: CC Persons 83%; CC Property 28%; CC Other 69%; and Total CC: 47%





Cold Lake Detachment – Top Ten calls for Service by Workload 2016





Cold Lake Municipal Detachment – Criminal Code Persons

Note: The previous slides were based on file counts.

The following slides are based on the crime(s) that are reported in those files.







(i.e. one file may have two or more crimes involved)

Municipal Detachment Area Only	Trend	2013	2014	2015	2016
Robbery		16	10	8	14
Assault		254	162	211	288
Uttering Threats		49	61	63	105
TOTAL PERSONS		417	288	357	455





Cold Lake Municipal Detachment – Property Crime

Municipal Detachment Area Only	Trend	2013	2014	2015	2016
Break & Enter		61	67	63	98
Theft of Motor Vehicle		106	162	86	154
Theft Under \$5,000		366	311	316	385
Possn Stn Goods		17	22	32	42
Mischief To Property		599	589	634	536
TOTAL PROPERTY		1,221	1,213	1,221	1,310





Cold Lake Municipal Detachment – Community Engagement

Select Categories	2013	2014	2015	2016	% Change 2015-2016
Mischief To Property	599	589	634	536	↓ -15%
Disturbing the peace	254	165	313	219	↓ -30%
Suspicious Person/Vehicle/Property	80	186	148	390	164%





Cold Lake Municipal Detachment – Prisoners Held





Recent Significant Arrests

- August 24th, 2016 – Search Warrant leads to 24 charges on two adult males for stolen property and weapons offences.
- September 23rd, 2016 – 31 property and weapons charges laid on 7 adults and 1 youth.
- October 14th, 2016 – Traffic stop leads to charges and the seizure of 7.76 pounds of Cannabis Marihuana and 163 grams of Cannabis Resin.
- October 21st, 2016 – 9 property and person crime charges laid against 1 adult male.
- November 25th, 2016 – 42 property and driving offences laid on 1 adult male.
- November 28th, 2016 – Solved 4 robberies that were committed in Cold Lake during the summer and fall of 2016. 28 charges laid against 2 youths.
- December 3rd, 2016 – 21 charges laid against an adult male also wanted on several warrants.
- December 8th, 2016 – 12 charges laid against an adult male following a police pursuit.





Questions?

Thank you!

S/Sgt. Jeremie Landry
Detachment Commander
Cold Lake RCMP



ENGAGEMENT STRATEGY

**Ready to make a change as a community?
We want to make a difference.**



AIMS AND GOALS

- ☐ Reach out to the business community; start with downtown community.
- ☐ Be a regular face in the business community.
- ☐ Offer a Crime Prevention through Environmental Design (CPTED) brochure and checklist for business and residential properties.
- ☐ Offer an incentive program which foster crime prevention through environmental design.
- ☐ Collaborative communication.

WHAT COLD LAKE MUNICIPAL ENFORCEMENT MAY OFFER

- ☐ Offer daily (vehicle and foot) patrols for the business community.
- ☐ Develop a Crime Prevention through Environmental Design (CPTED) brochure and checklist.
- ☐ Develop a strategy for officers to engage business representatives on the frequency and types of concerns i.e. vagrancy, garbage, mischief, and building intrusion.
- ☐ Promote incentive programs which prevent crime through enhance environmental design.

ACTION PLAN

- ☐ Initiate service expectations for daily (vehicle and foot) patrols in the business community.
- ☐ Engage with business representatives through collaborative communication.
- ☐ Initiate the Crime Prevention through Environmental Design (CPTED) survey program developed through the checklist.
- ☐ Promote incentive programs which prevent crime through enhance environmental design.
- ☐ Track and monitor mischief hot spots and vagrancy concern.
- ☐ In six months present to Council provide businesses findings.

FOLLOW UP

- ☐ Communicate with law enforcement partners to understand where they are seeing improvements and trends.
- ☐ Follow up with businesses, adjust service expectations as required.
- ☐ In 12 months, present to Council finding from initiatives

Join Crime Prevention Programs in Your Community:

~~Block Watch and Apartment Watch:~~
~~calgaryblockwatch.com~~

~~Block Parent:~~ ~~calgaryblockparent.ca~~

Alberta Community Crime Prevention Association (ACCPA): accpa.org

For More CPTED Information:

Federation of Calgary Communities

Information on residential communities in Calgary and community associations:

calgarycommunities.com or 403-244-4111

Crime Prevention Unit, Calgary Police Service

Information on site assessments, CPTED training, resources and other crime prevention measures: calgarypolice.ca or 403-206-8399

District Offices, Calgary Police Service

Your Community Liaison Officer (CLO) can help with concerns in your community. CLOs are available through Calgary Police Service District Offices, which are listed on the Calgary Police Service Blue Page in the Telus White Pages telephone directory or online at calgarypolice.ca

To Read More About CPTED

"Crime Prevention Through Environmental Design: Applications of Architectural Design and Space Management Concepts" — 2nd Edition, 1999 by Timothy D. Crowe

Calgary Police Service, Crime Prevention Unit
133 - 6th Avenue SE,
Calgary AB Canada
T2G 4Z1
calgarypolice.ca



**CALGARY
POLICE
SERVICE**

Crime Prevention Through Environmental Design



Crime Prevention Through Environmental Design (CPTED, pronounced sep-ted) helps us to create healthy, safe communities through well planned environmental design.



ALBERTA MOTOR ASSOCIATION

Crime Prevention Through Environmental Design (CPTED)

CPTED enhances safety by influencing the physical design of our environment and encouraging positive social interaction. CPTED recognizes that our environment directly affects our behaviour, whether or not we are aware of it, because we constantly respond to what is around us. These responses help us to interact safely in our communities.

An environment designed using CPTED principles reduces opportunities for criminal acts to take place and helps us to feel safer. By doing so, it improves our quality of life.

CPTED uses many different strategies that work together to create safer communities. It complements crime prevention strategies such as locks and bars, police and security personnel and, ultimately, increases our freedom to use our communities.

Second Generation CPTED

Second Generation CPTED takes these strategies further, to encourage the interaction of everyone within their community, their environment and each other.

Three Basic Principles Guide CPTED

Natural Access Control; Natural Surveillance; and Territorial Reinforcement

Natural Access Control restricts access

Natural access control guides how people enter and leave a space through the placement of entrances, exits, fences, landscaping and lighting. It

can decrease opportunities for criminal activity by denying criminals access to potential targets and creating a perception of risk for would-be offenders.

Natural Surveillance increases visibility

Natural surveillance guides the placement of physical features such as windows, lighting and landscaping. These features affect how much can be seen by occupants and passersby. Potential criminals are unlikely to attempt a crime if they are at risk of being observed. Similarly, we are likely to feel safer when we can see and be seen.

Territorial Reinforcement promotes a sense of ownership

Physical design can create an area of territorial influence that can be perceived by and may deter potential offenders. Examples include defined property lines and clear distinctions between private and public spaces. Territorial reinforcement can be created using landscaping, pavement designs, gateway treatments, signs and fences.

Two Additional Ideas Support Community CPTED Efforts:

Maintenance and Activity Support

Maintenance deters offenders

A well maintained home, building or community park creates a sense of guardianship and helps deter criminals.

Activity Support fosters community interaction

Criminal acts can be discouraged in public spaces when we encourage activities in those spaces by residents, visitors and other legitimate users.

Safe design *enhances* good design.

Natural Access Control restricts access

The fencing defines the site, thereby controlling access to the property. It also allows for strong natural surveillance



Natural Surveillance increases visibility

Natural surveillance is created by effective lighting, camera surveillance and the use of windows and activity support.

Territorial Reinforcement promotes a sense of ownership



Good border definition allows property owners to define public and private spaces while maintaining surveillance.



This entry is designed with an anti-jimmying plate on the door, an outside intercom, a security camera and glass security doors which provides the tenants with access control and good surveillance. This also increases security at the site and reduces fear for tenants.

CPTED Tips to Enhance Security

Houses

- Use walkways and landscaping to direct visitors to the main entrance and away from private areas
- Keep shrubs and trees trimmed from windows and doors to improve visibility
- Use lighting over entrances
- Use thorny plants along fence lines and around vulnerable windows
- Join Block Watch

Apartments

- Ensure hallways and parking areas are well lit
- Install good quality deadbolts and peepholes on unit doors
- Provide common spaces in central locations to encourage tenant interaction
- Join or start Apartment Watch in your building

Neighbourhoods

- Locate open spaces and recreational areas so they are visible from nearby homes and streets
- Avoid landscaping that might create blind spots or hiding places
- Make sure there is appropriate lighting
- Design streets to discourage cut-through or high-speed traffic using traffic calming measures
- Join Block Parent and Block Watch

Businesses

- Place checkout counters near the front of the store, clearly visible from outside
- Window signs should cover no more than 15 per cent of windows to provide clear visibility into and out of the store
- Use shelving and displays no higher than five feet to help see who is in the store
- Avoid creating outdoor spaces that encourage loitering and provide increased security
- Install lighting in parking lots

Making Houses Safer

- Clearly define where your property begins and ends using plants, fences, changes in grade, or different walkway colour
- Provide unobstructed views of entrances by trimming shrubs and trees – see and be seen
- Install motion-sensor lights outside
- Use quality locks on doors and windows



Making Neighbourhoods Safer

- Provide appropriate lighting for streets, paths, alleys, and parks
- Maximize sightlines in and out of public spaces
- Encourage use of public spaces
- Record, Report and Remove graffiti
- Encourage a strong sense of community

Making Apartments Safer

- Clearly differentiate private property from public space through shrubbery, alternate paving stone colour or signage
- Provide common spaces to encourage tenant interaction
- Equip entrances with an intercom system
- Ensure all public areas are well-lit
- Install deadbolt locks and 180 degree eye viewers on unit doors



CPTED Crime Prevention Through Environmental Design

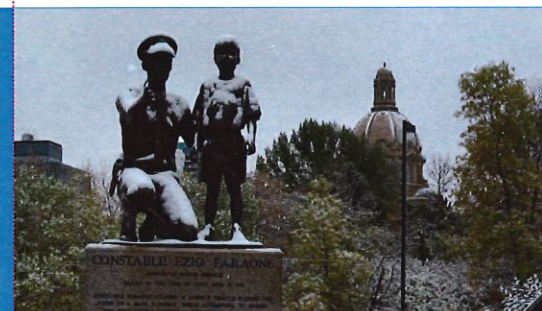
CRIME PREVENTION UNIT
EDMONTON POLICE SERVICE
780-421-3425
www.edmontonpolice.ca

The Edmonton Police Service offers CPTED workshops for both law enforcement officials and members of the general public.

For a complete listing of training dates and locations, contact the Crime Prevention Unit at 780-421-3425

CPTED audits are provided by the Edmonton Police Service as a community service. For more information contact the Crime Prevention Unit.

EDMONTON
POLICE
SERVICE



Crime Prevention Through Environmental Design

Creating safer communities through well-planned environmental design



www.edmontonpolice.ca

About CPTED

Poor design influences our fear of crime and the opportunities for crime to take place. Crime Prevention Through Environmental Design (CPTED) is a proven method to reduce actual crime and fear of crime by changing the physical environment.

The Edmonton Police Service partners with various Edmonton businesses and agencies to proactively apply CPTED principles. CPTED can be applied to an existing community, home, building, school, playground, park or business.

Crime prevention starts with you!



CPTED Design Concepts

DESIGNATION: Clearly indicate the intended purpose of a space

DEFINITION: Clearly define the rules and borders of a space

DESIGN: Layout and landscaping should support intended uses and behaviors

Surveillance

Surveillance refers to the sense of seeing and being seen in any space.



Natural Surveillance

- As people move around an area, they observe what is going on around them
- Businesses and residences can watch their surroundings through properly placed windows and transparent building materials
- Building interiors should provide for optimal visibility of entrances and shared spaces
- Encourage use of public spaces

Other Surveillance

- Cameras, alarms, and mirrors can assist in viewing areas that may be vulnerable
- Citizen foot patrols, Neighbourhood Watch groups and security patrols are other effective observation resources and show community involvement

Access Control

Controlling how people can enter and leave a property or neighbourhood is one of the keys to preventing crime. Remove potential escape routes, protect vulnerable areas and direct people to desired access points. People who use alternative methods to enter an area look suspicious, risk detection and sense an increased risk of apprehension.

Natural Access Control

- Landscape and building design should provide a natural indication of where people are allowed to be
- This includes walkways, flowerbeds, bushes and groundcover such as gravel or wood chips

Other Access Control

- Fences and gates are the most common means of denying access to unwanted visitors. These structures can also direct people to desired entrances
- Card readers, locks and reception areas ensure only authorized people are allowed into non-public areas



Territoriality

Territoriality means showing people that a property is cared for. Potential offenders are more likely to feel that they do not belong on a well maintained property.



Defensible Space

- Clearly define the boundaries of a property
- The transition from public to private areas should be obvious
- Use landscaping, change in grade, change in texture and design to convey a sense of ownership

Maintenance

- A well maintained property indicates pride of ownership and a lack of tolerance for unwanted behavior
- Deterioration of a property indicates less control by the intended users and greater vulnerability to crime (graffiti, broken windows, poor property maintenance)



STAFF REPORT

Title: Cold Lake Regional Utility Services Commission (CLRUSC) Waste Water Treatment Plant - Moving Bed Biofilm Reactor (MBBR) Pilot Project

Meeting Date: March 17, 2020

Executive Summary:

In line with the recommendations of the Waste Water Treatment Facility Feasibility Study (2018), a pilot study on Moving Bed Biofilm Reactor (MBBR) was initiated at Cold Lake Regional Utility Services Commission (CLRUSC's) lagoon site on Nov. 1, 2019. The pilot study is in progress and anticipated to complete by May 2020. Two interim progress reports have been presented to the CLRUSC in Nov 2019 and Feb 2020. The intent of this staff report is to update the Corporate Priorities Committee of Council on the progress of the MBBR pilot project.

Background:

The existing wastewater system license is due to expire on Jan 1, 2022. Alberta Environment and Parks expects the Commission to upgrade the facility and be operational by 2022 in order to meet the desired effluent criteria. To meet stringent regulatory effluent limits, and to assess the effectiveness of recommended MBBR technology, the pilot project was initiated. The pilot project will evaluate the performance of the MBBR technology during the winter months when the ammonia concentration in the lagoon effluent is higher and the microbial activity is lower.

The results of the pilot study in the form of a Draft Report is expected to be available for review by June 2020.

Alternatives:

Recommended Action:

For information only.

Budget Implications (Yes or No):

Yes

Submitted by:

Kevin Nagoya, Chief Administrative Officer

CLRUSC Wastewater Treatment Facility- MBBR Pilot Study Update

February 24, 2020



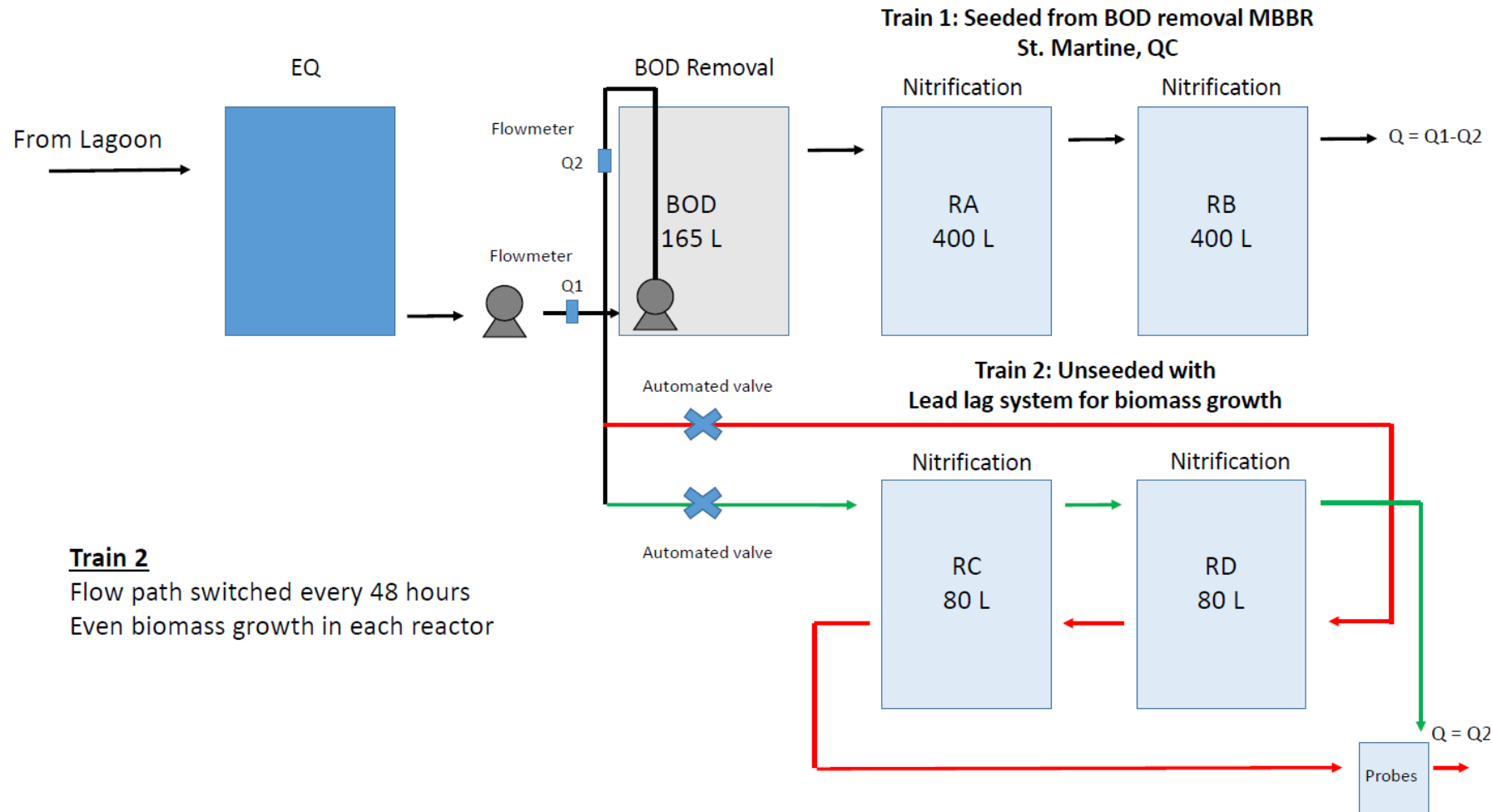


- The pilot plant became operational on November 1, 2019.



➤ Location of the Pilot trailer

Process Flow Diagram





Project Photos-

MBBR inflow and outflow

11 01 2019



Project Photos- Equalisation Tank



Project Photos-

Train 1,
Reactors A and B,
Pre seeded.

Reactor A- BOD removal
+ Nitrification

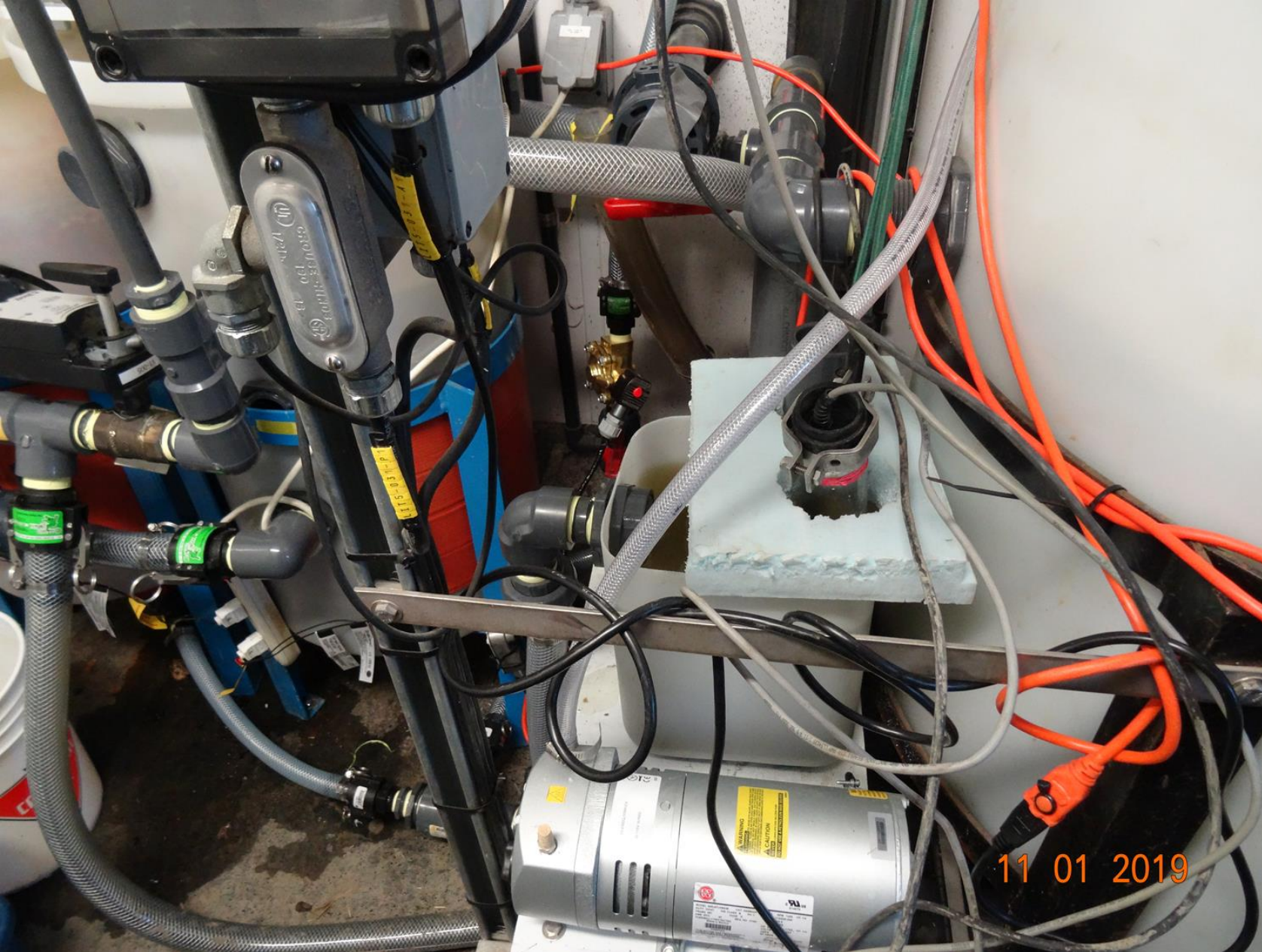
Reactor B- Nitrification



Project Photo-

Train 2,
Reactors C and D,

Non seeded media



Project Photo- Measurement Probes



Project Photo:
Control Unit

11 01 2019



Unseeded media (left),

Seeded media (right)

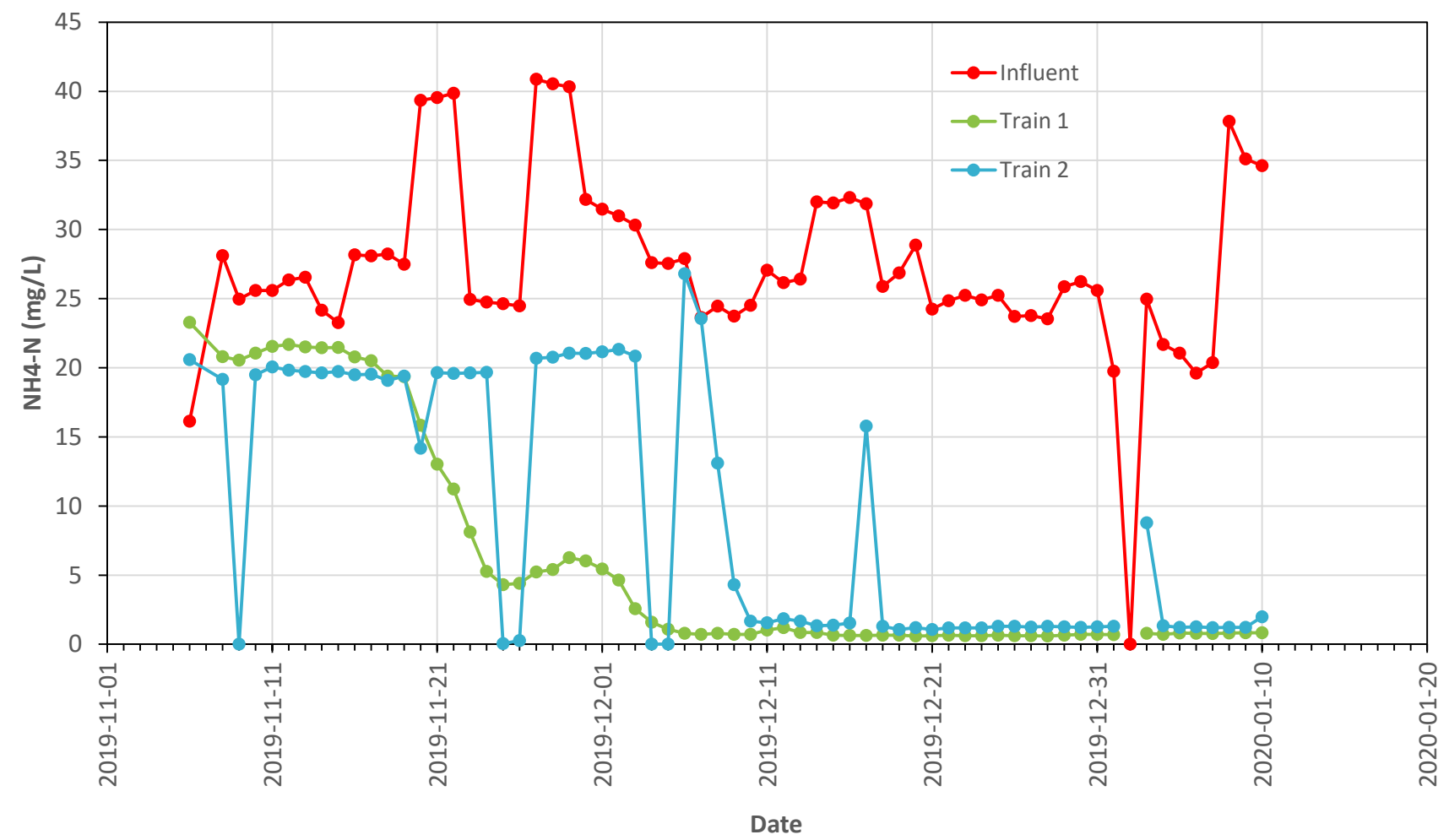
The process consists of two trains running in parallel:

- The first train was commissioned using pre-seeded media, and
- The second train was commissioned using unseeded media
- Both trains together are treating approximately 3.5 m³/d

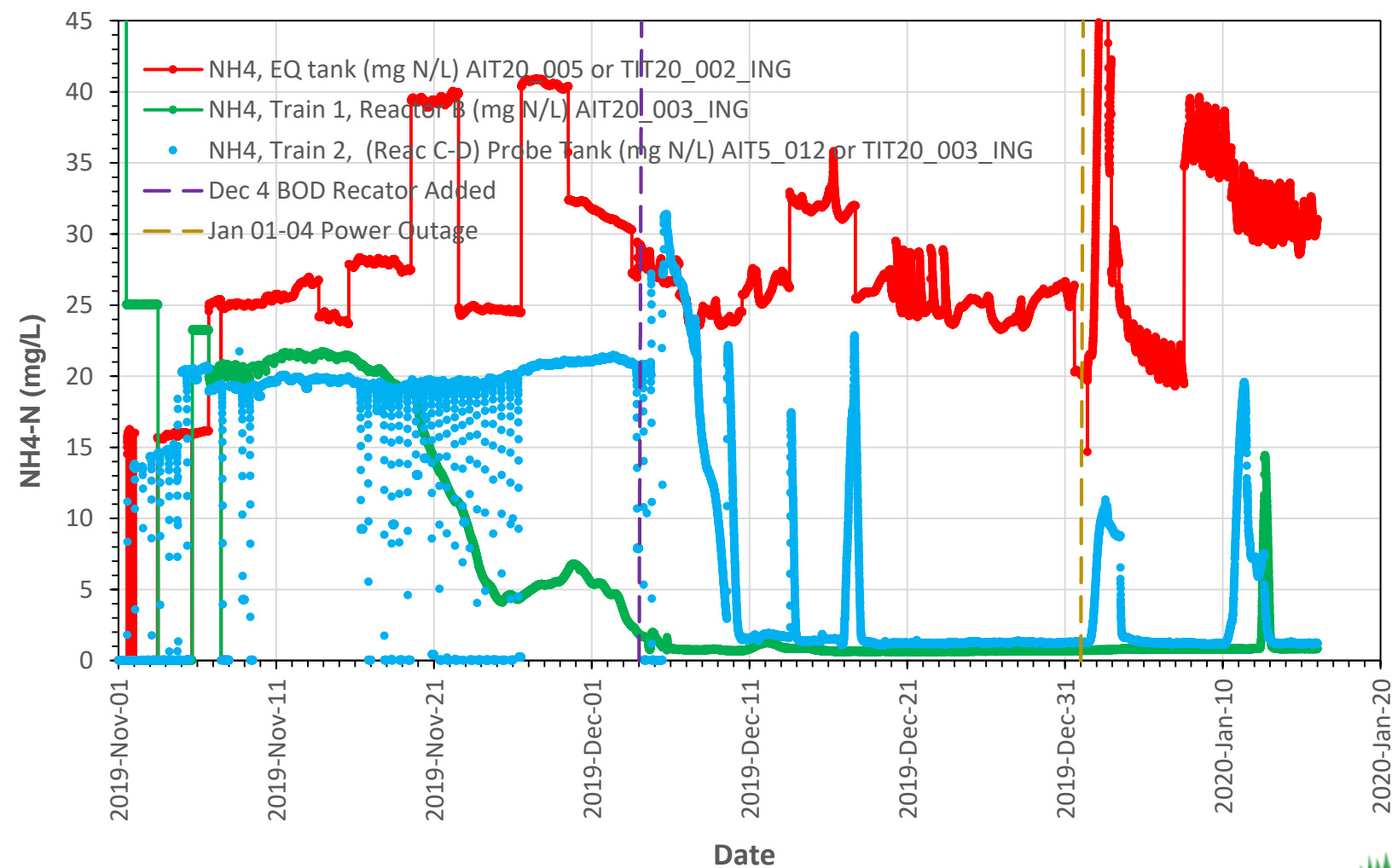
Laboratory Analyses and Frequency

Parameters	Units	Influent	RA	RB	RC	RD
Total Ammonia	mg N/L	2x/week	2x/week	2x/week	2x/week	2x/week
Nitrites	mg N/L	1x/week	2x/week	2x/week	2x/week	2x/week
Nitrates	mg N/L	1x/week	2x/week	2x/week	2x/week	2x/week
pH, temperature		2x/week	2x/week	2x/week	2x/week	2x/week
DO	mg/L	---	Online	---	Online	Online
Soluble COD	mg/L	2x/week	2x/week	---		
TSS*	mg/L	1x/week	---	1x/week	1x/week	1x/week
Total phosphorus	mg P/L	1x/week	---	1x/week	1x/week	1x/week
Orthophosphate	mg P/L	1x/week	---	1x/week	1x/week	1x/week
Alkalinity (CaCO ₃)	mg/L	1x/week	1x/week	1x/week	1x/week	1x/week

Performance Review- Ammonium Removal (Lab Data)



Performance Review- Ammonium Removal (Online Data)



Performance Comparison

- The main purpose of integrating a MBBR system into the existing lagoon facility is to remove ammonium from wastewater to meet the effluent limits by Alberta Environment and Parks (AEP) and Environment Canada (EC)
- The proposed effluent limits for ammonium concentration based on AEP and EC feedback is compared with the current pilot plant performance in the table below:

Parameters	Proposed Limit	Pilot Plant Performance
Ammonia-Nitrogen (July 1 to September 30)	≤ 5.0 mg/L monthly arithmetic mean	No Data Available
Ammonia-Nitrogen (October 1 to June 30)	≤ 10 mg/L monthly arithmetic mean	1.1 mg/L (Based on Dec 2019 data) 1.3 mg/L (Based on Jan 2020 data)

Next Steps – Piloting Phase

- The Veolia pilot plant is expected to be onsite and in operation through the winter months until the end of May 2020.
- The results of the pilot study will be summarized in a draft report that AECOM expect to submit to the CLRUSC by the end of June 2020. The report will include:
 - Commentary on the results of the study;
 - Recommendations for the full-scale system to be designed and constructed;
 - A conceptual site plan identifying the location of the proposed new equipment;
 - Updated cost estimates;
 - Commentary on equipment procurement options; and
 - Updated project completion schedules.

Next Steps – Project Funding

- WWTF existing license is due to expire by January 1, 2022, Alberta Environment and Parks expects the upgraded facility be operational by January 2022.
- It may be difficult to achieve this schedule if there is a delay between the completion of the pilot study and start of detailed design.
- It is understood that the design and construction phases of the proposed WWTP may be contingent on the availability of federal and provincial funding.
- Therefore, it would be prudent to apply for contributing funds from the Federation of Canadian Municipalities (FCM), the Water for Life Program, and any other grants that may be available for this project.



STAFF REPORT

Title: Cityworks – Work Order and Asset Management System

Meeting Date: March 17, 2020

Executive Summary:

In 2015, a \$65,000 budget was approved for the purchase of Cityworks software. Implementation began in 2017 and the program was rolled out to Infrastructure Services departments in February 2018.

Cityworks empowers GIS to manage both physical infrastructure and land-focused asset management. City of Cold Lake allocate considerable resources toward developing and maintaining its GIS, Cityworks capitalizes on this valuable resource.

City of Cold Lake has also redesigned its Pothole Reporting application and at the CPC meeting administration will provide a demo of the Cityworks system along with the new pothole reporting app.

Background:

Presentation

Alternatives:

None at the time.

Recommended Action:

For information and feedback only.

Budget Implications (Yes or No):

Yes

Submitted by:

Kevin Nagoya, Chief Administrative Officer