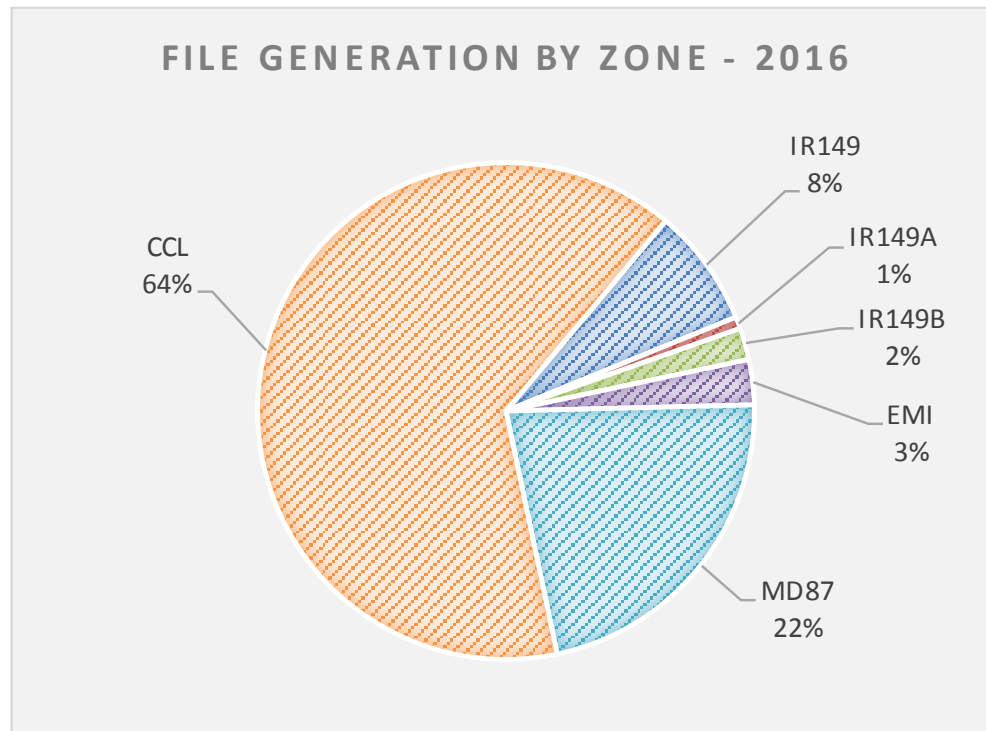




## Cold Lake Detachment – File Generation by Zone (Location) 2016







## Cold Lake Detachment – File Generation by Zone (Location) 2014-2016

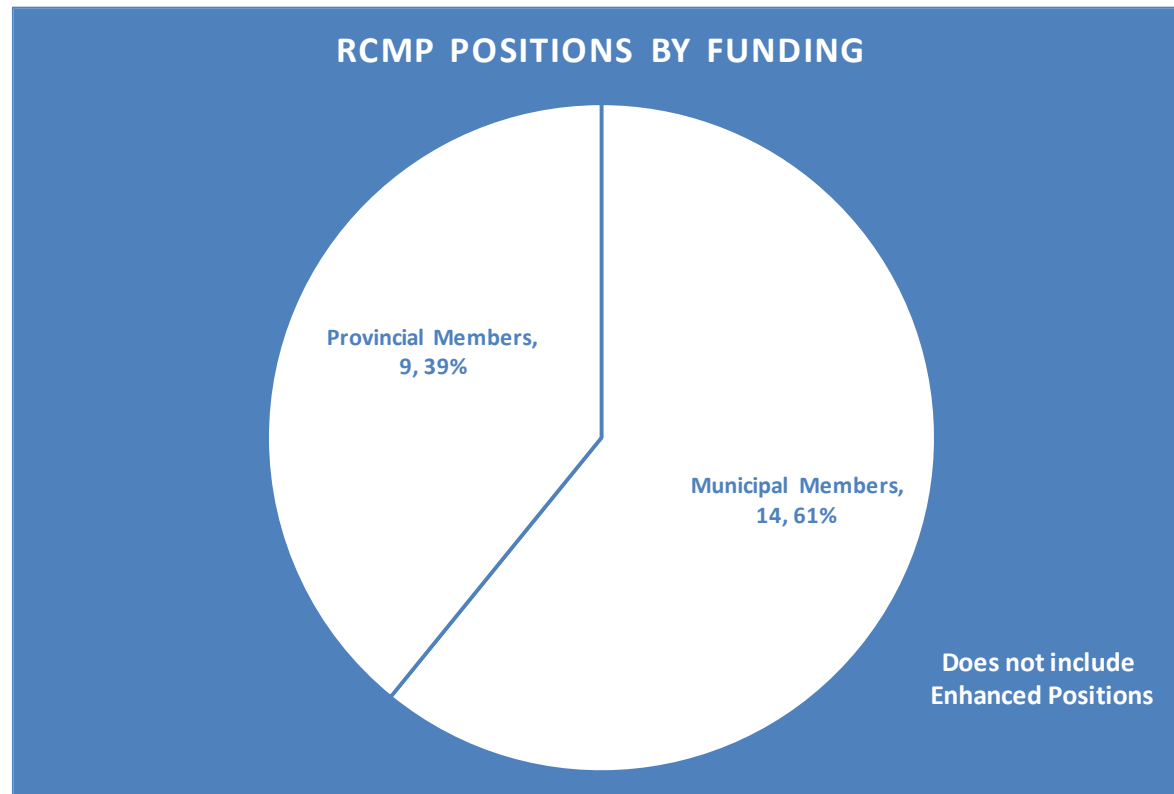
| % of Files Generated by Zone           | 2014 | 2015 | 2016 |
|--|------|------|------|
| Elizabeth Métis Settlement (EMI)       | 4%   | 4%   | 3%   |
| M.D. of Bonnyville #87 (MD87)          | 18%  | 19%  | 22%  |
| City of Cold Lake (CCL)                | 64%  | 64%  | 64%  |
| Cold Lake First Nations #149 (IR149)   | 10%  | 9%   | 8%   |
| Cold Lake First Nations #149A (IR149A) | 1%   | 1%   | 1%   |
| Cold Lake First Nations #149B (IR149B) | 3%   | 3%   | 2%   |







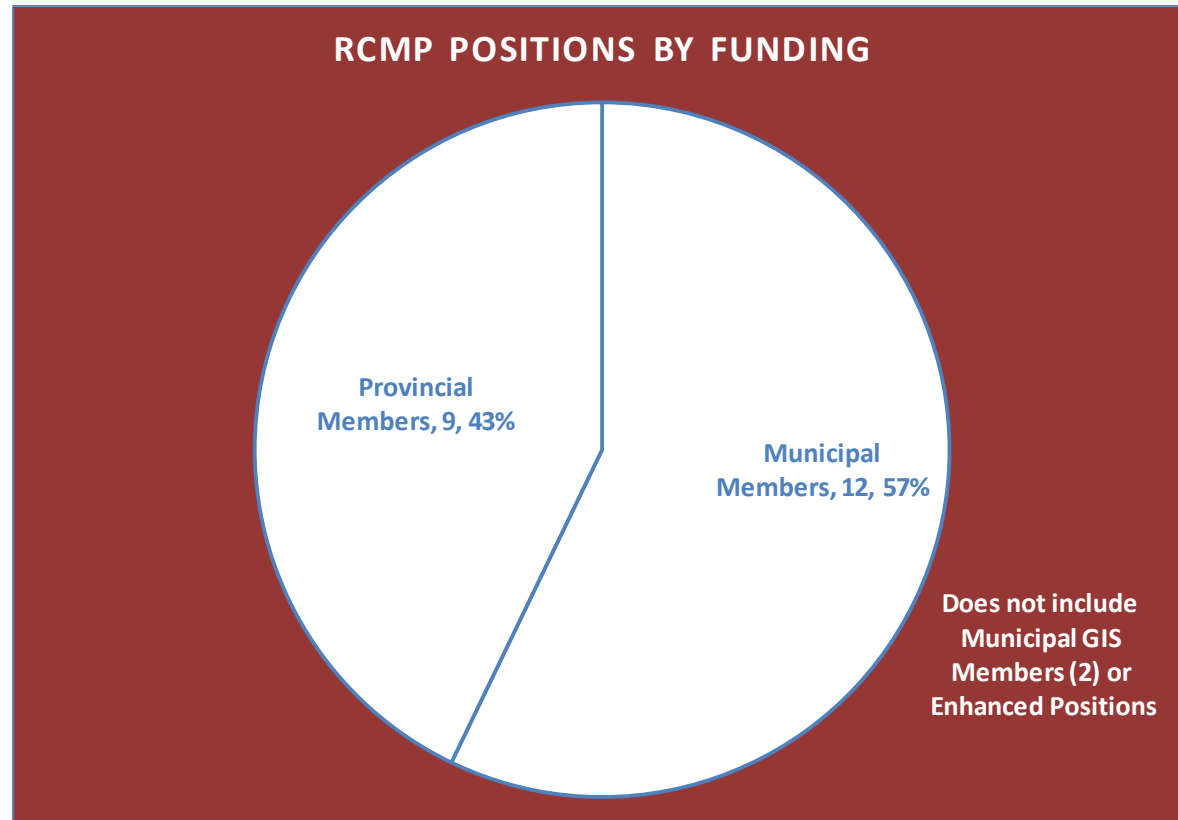
## Cold Lake Detachment – File Count by Year 2012 to 2016







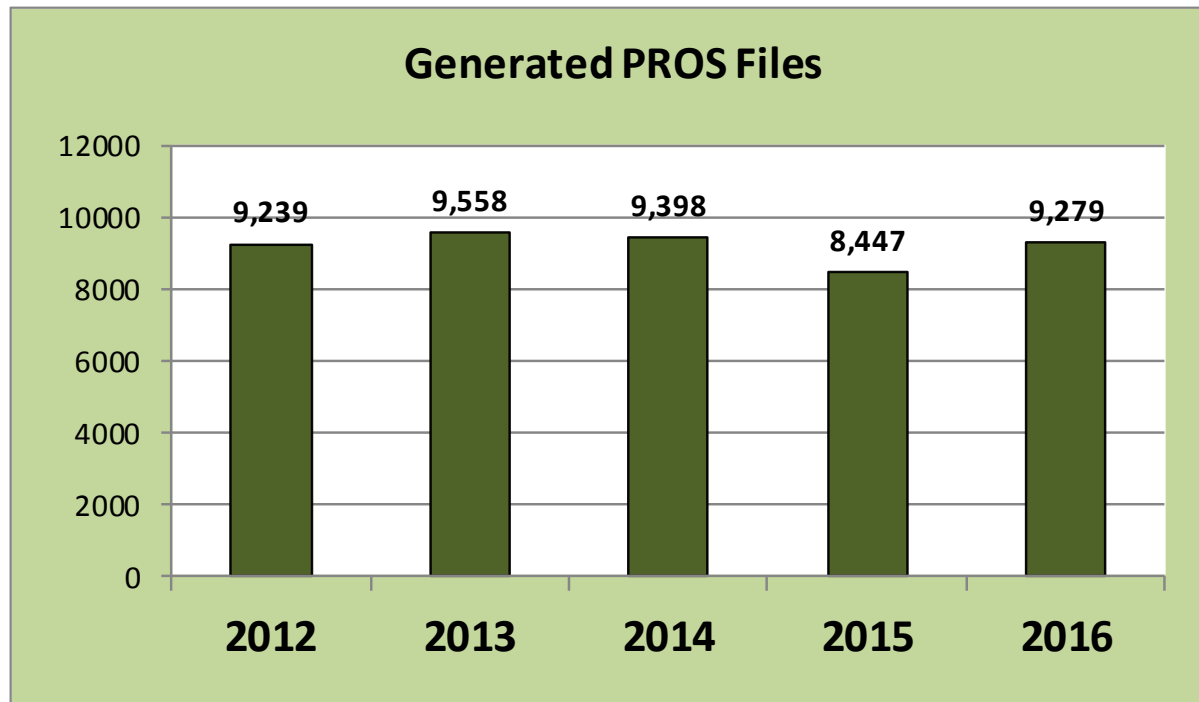
## Cold Lake Detachment – File Count by Year 2012 to 2016







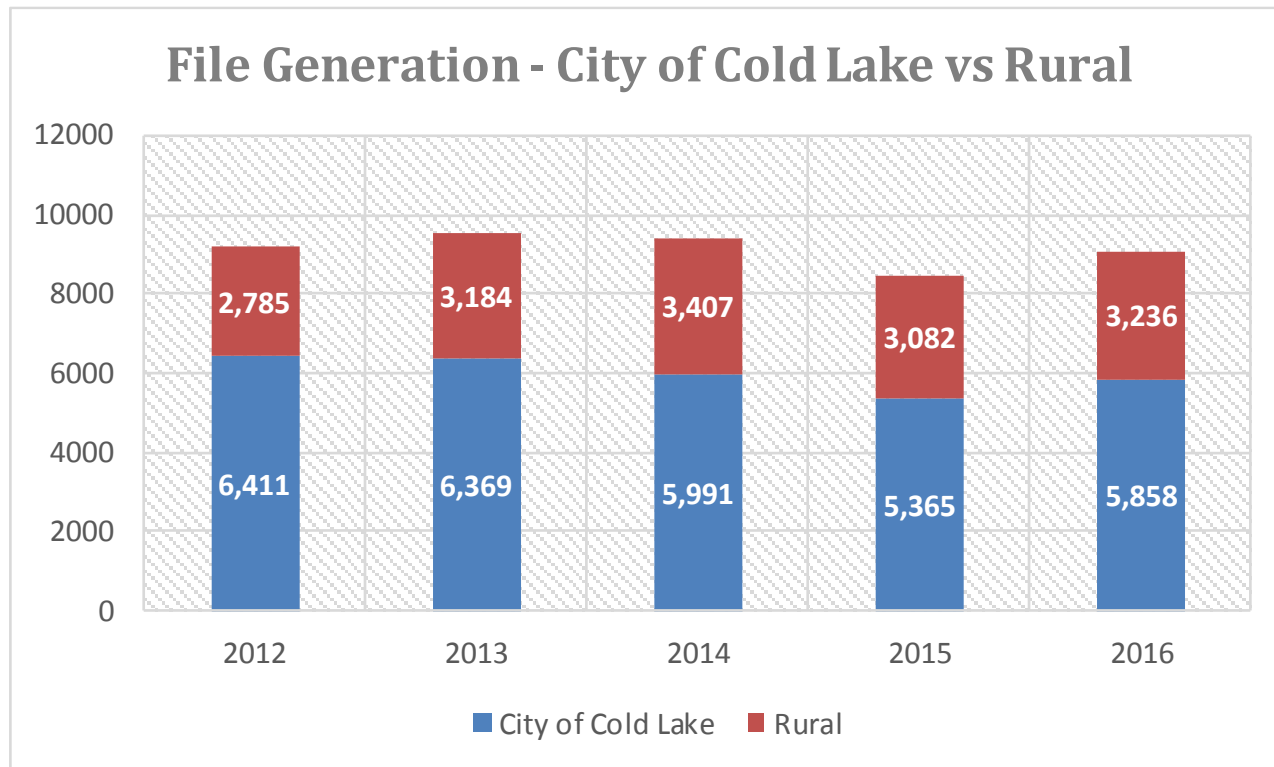
## Cold Lake Detachment – File Count by Year 2012 to 2016







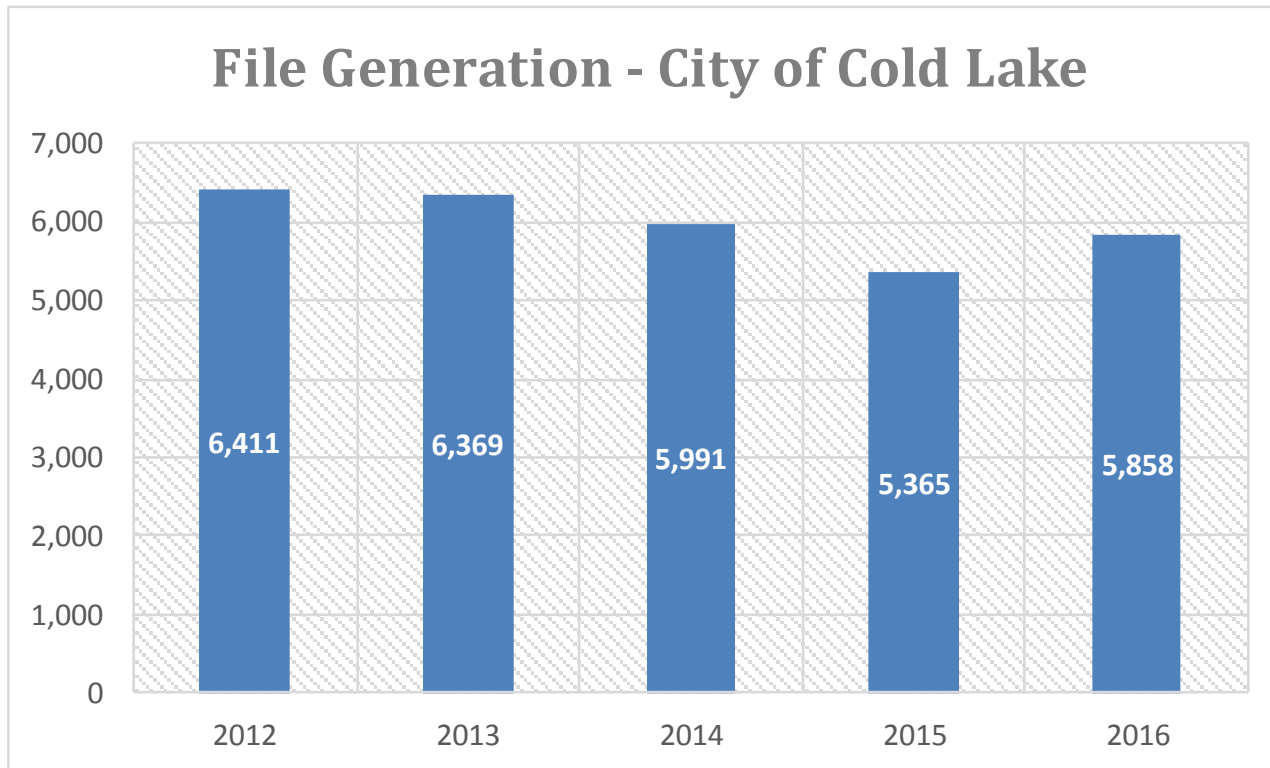
## Cold Lake Municipal/Rural – File Count by Year 2012 to 2016







## Cold Lake Municipal – File Count by Year 2012 to 2016







## Cold Lake Municipal Detachment – Clearance Rates (Incident Based)

| CLEARANCE RATES            | 2013       | 2014       | 2015       | 2016       |
|----------------------------|------------|------------|------------|------------|
| CC - Persons               | 81%        | 78%        | 82%        | 86%        |
| CC - Property              | 39%        | 39%        | 42%        | 36%        |
| CC - Other                 | 69%        | 105%       | 65%        | 65%        |
| <b>TOTAL CRIMINAL CODE</b> | <b>54%</b> | <b>46%</b> | <b>55%</b> | <b>53%</b> |

When a police investigation leads to the identification of a suspect against whom a charge could be laid, then that incident can be cleared.

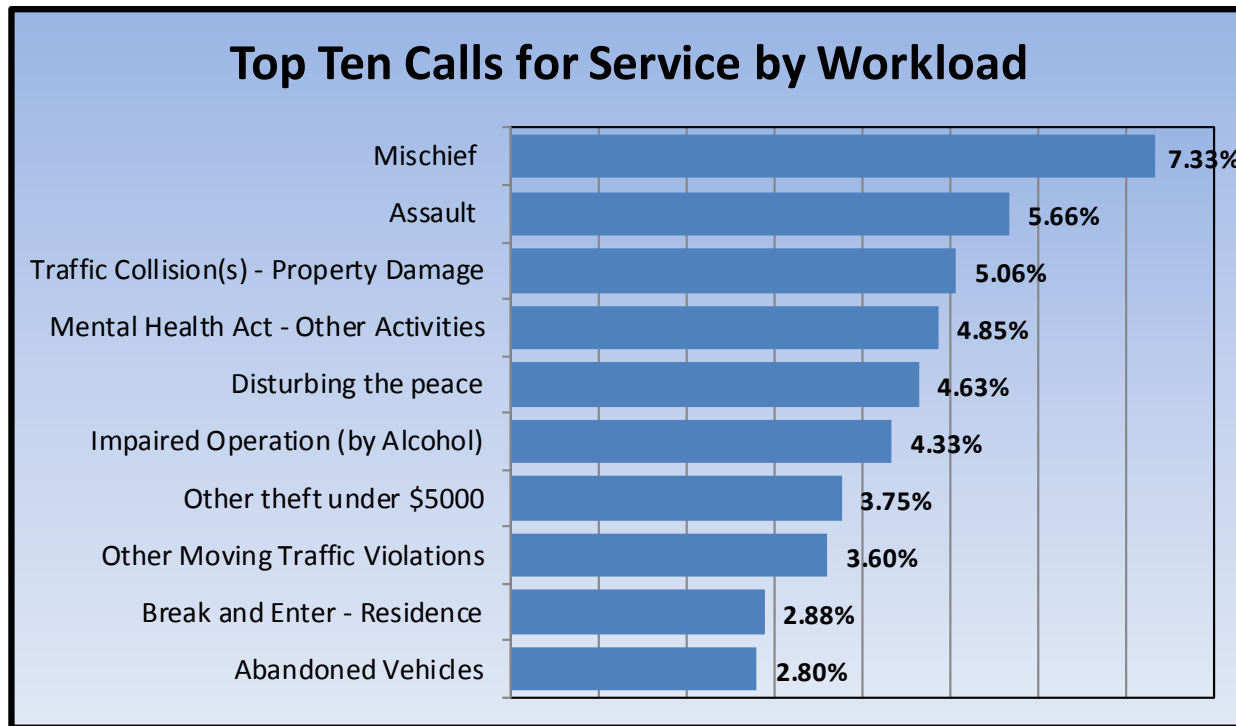
*Municipal Division Average Clearance Rates for 2015 were: CC Persons 83%; CC Property 28%; CC Other 69%; and Total CC: 47%*







## Cold Lake Detachment – Top Ten calls for Service by Workload 2016







## Cold Lake Municipal Detachment – Criminal Code Persons

Note: The previous slides were based on file counts.

The following slides are based on the crime(s) that are reported in those files.

(i.e. one file may have two or more crimes involved)







| Municipal Detachment Area Only | Trend | 2013       | 2014       | 2015       | 2016       |
|--------------------------------|-------|------------|------------|------------|------------|
| Robbery                        |       | 16         | 10         | 8          | 14         |
| Assault                        |       | 254        | 162        | 211        | 288        |
| Uttering Threats               |       | 49         | 61         | 63         | 105        |
| <b>TOTAL PERSONS</b>           |       | <b>417</b> | <b>288</b> | <b>357</b> | <b>455</b> |







## Cold Lake Municipal Detachment – Property Crime

| Municipal Detachment Area Only | Trend  | 2013         | 2014         | 2015         | 2016         |
|--------------------------------|--|--------------|--------------|--------------|--------------|
| Break & Enter                  |  | 61           | 67           | 63           | 98           |
| Theft of Motor Vehicle         |  | 106          | 162          | 86           | 154          |
| Theft Under \$5,000            |  | 366          | 311          | 316          | 385          |
| Possn Stn Goods                |  | 17           | 22           | 32           | 42           |
| Mischief To Property           |  | 599          | 589          | 634          | 536          |
| <b>TOTAL PROPERTY</b>          |  | <b>1,221</b> | <b>1,213</b> | <b>1,221</b> | <b>1,310</b> |







## Cold Lake Municipal Detachment – Community Engagement

| Select Categories                  | 2013 | 2014 | 2015 | 2016 | % Change<br>2015-2016 |
|------------------------------------|------|------|------|------|-----------------------|
| Mischief To Property               | 599  | 589  | 634  | 536  | ↓ -15%                |
| Disturbing the peace               | 254  | 165  | 313  | 219  | ↓ -30%                |
| Suspicious Person/Vehicle/Property | 80   | 186  | 148  | 390  | 164%                  |







## Cold Lake Municipal Detachment – Prisoners Held







## Recent Significant Arrests

- August 24<sup>th</sup>, 2016 – Search Warrant leads to 24 charges on two adult males for stolen property and weapons offences.
- September 23<sup>rd</sup>, 2016 – 31 property and weapons charges laid on 7 adults and 1 youth.
- October 14<sup>th</sup>, 2016 – Traffic stop leads to charges and the seizure of 7.76 pounds of Cannabis Marihuana and 163 grams of Cannabis Resin.
- October 21<sup>st</sup>, 2016 – 9 property and person crime charges laid against 1 adult male.
- November 25<sup>th</sup>, 2016 – 42 property and driving offences laid on 1 adult male.
- November 28<sup>th</sup>, 2016 – Solved 4 robberies that were committed in Cold Lake during the summer and fall of 2016. 28 charges laid against 2 youths.
- December 3<sup>rd</sup>, 2016 – 21 charges laid against an adult male also wanted on several warrants.
- December 8<sup>th</sup>, 2016 – 12 charges laid against an adult male following a police pursuit.





# RCMP



ROYAL CANADIAN MOUNTED POLICE

## Questions?

## Thank you!

S/Sgt. Jeremie Landry  
Detachment Commander  
Cold Lake RCMP



Royal Canadian Mounted Police  
Gendarmerie royale du Canada

Canada 