



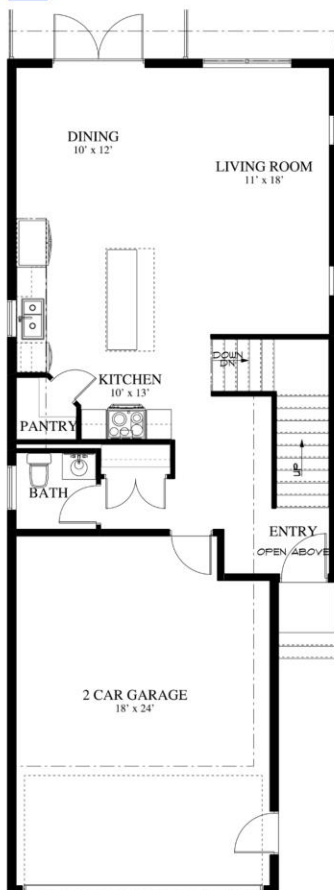
THE TAMMY II

The Tammy II is only 22'-0" wide with a double car attached garage. Upper floor features a sitting area and large master suite with large walk-in closet and ensuite. Open concept design and high ceiling in entry. Large living space in a narrower footprint.

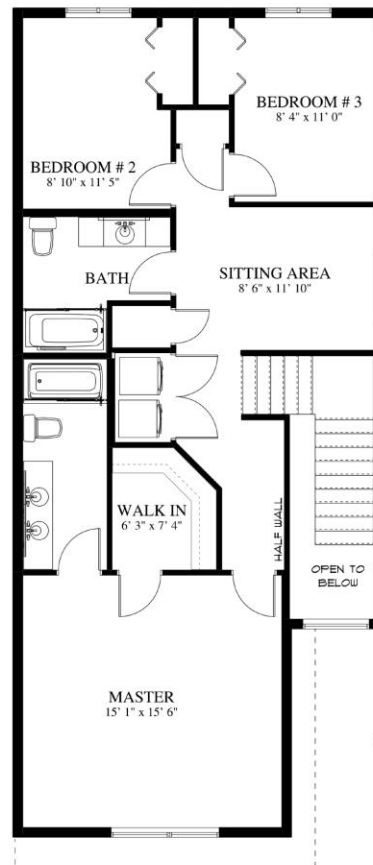
1708 SqFt
22'-0" Wide x 58'-0" Deep



DreamHomeCanada.ca By 
COWAN DESIGN AND DRAFTING



THE TAMMY
 MAIN FLOOR AREA
 728 sq. ft.



THE TAMMY
 UPPER FLOOR AREA
 980 sq. ft.



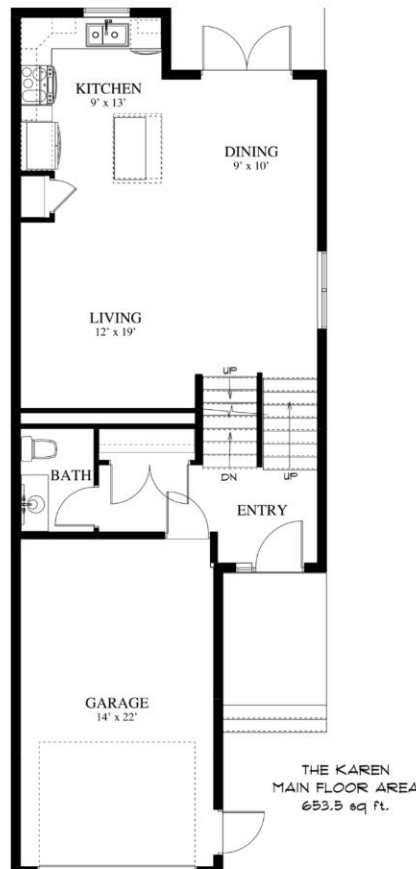
THE KAREN

The Karen is only 20'-0" wide making it ideal for narrow lots. The basement is a bi-level foundation with lots of large windows. The stacking of the house allows for a small footprint with plenty of living space. The Master Bedroom is on its own level providing great privacy and is completed with a walk in closet and ensuite.

1556 SqFt
20'-0" Wide x 56'-0" Deep



DreamHomeCanada.ca By 
COWAN DESIGN AND DRAFTING



913 8th Avenue Cold Lake 780-654-2085 celine@cowandesign.ca



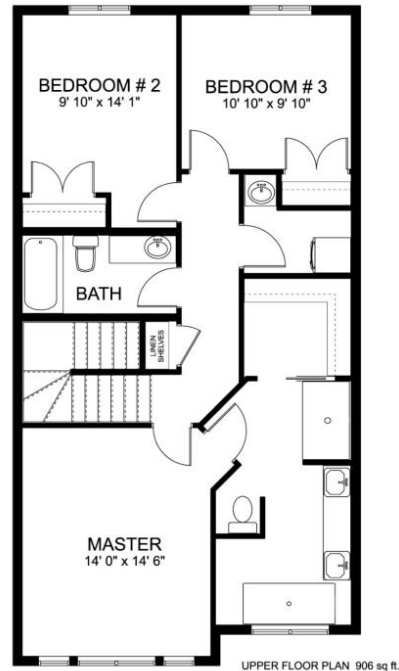
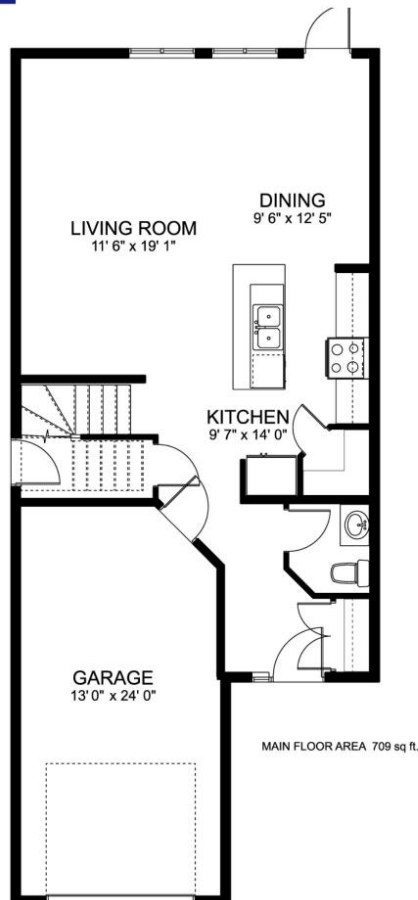
THE KATE

The Kate is a 22'-0" house. It features a large Ensuite with soaker tub and separate shower. Large Walk-in Closet. Laundry on upper floor near bedrooms. Open Concept design. Separate side entry to optional basement suite.

1615 SqFt
22'-0" Wide x 51'-6" Deep



DreamHomeCanada.ca By 
COWAN DESIGN AND DRAFTING



913 8th Avenue Cold Lake 780-654-2085 celine@cowandesign.ca