

COMMERCIAL XPRESS II REQUIREMENTS

GENERAL

1. All deviations from the drawings must be communicated in writing. Changes made after the lift is put into production may incur additional costs.
2. In floor heating will need to be identified and possibly re-routed for tower mounted applications.
3. Any wiring, piping or other items in the walls, stairs or floors that may be damaged at fastening points must be identified and possibly re-routed.
4. Blocking as per the drawings will be required – either a surface mounted 2x6 and 2x4 or blocking within the wall.
5. The lower landing must be reasonably level.

Electrical

- Dedicated 208-240 VAC 20-amp single phase disconnect in place, within view of the lift - **the disconnect must be lockable and fused.**
- GFI receptacle within 3 meters of the upper or lower rail.
- Emergency Lighting, illuminating onto the run of stairs and each landing.
- Adequate lighting above the lift at both landings with a secondary ballast
- Call Stations and conduit will be surface mounted unless rough-ins and conduit are run prior to the lift installation. This is the responsibility of the general contractor/owner.

Please contact us with any questions or concerns

Uppercut Elevators and Lifts
Calgary: 403.519.3186
Edmonton: 587.597.9959

September 3, 2019

Attention: Andrea
Cold Lake Seniors Society
1301 8th ave
Cold Lake, Alberta
T9M 1P3
Email: coldlake@telus.net



We are pleased to present a quotation for the following product

Garaventa Artira inclined platform lift – B355 code Compliant

- 800mm x 1220mm platform
- Custom built to accommodate a 180 degree bending stairway with 90-degree bend at the top
- Tower mounted directly to the stairs
- Side load
- Auto fold platform
- Safety arms
- Folding seat
- Constant pressure controls Smart-Lite Technology
- **660lb capacity**
- Drive box locate at the upper landing
- Overspeed sensor and lock
- In hanger alarm
- 2 keyed call stations
- Emergency manual lowering
- 2 Audio visual alerts
- Bi-directional pressure sensitive ramps with under platform sensor
- AEDARSA registration, and initial inspection
- 2-year warranty
- **1st year preventative maintenance**

The following code required options are included:

- **Handrail incorporated into rail system**
- **Auto-fold**

UpperCut Elevators and Lifts will provide and install this lift for **\$51,560.00.**



Additional Options

- Attendant hand-held pendant control \$375.00

These prices include:

- Installation
- engineered stamped drawings (for the lift)
- Registration of the device with AEDARSA
- Initial inspection by AEDARSA
- All Warranties

Prices do not include any contractual work required.

These products are GST exempt and this quote is valid for 60 days. Please contact me with any questions.

Kindest Regards,

Cathie Dishaw
587.597.9959



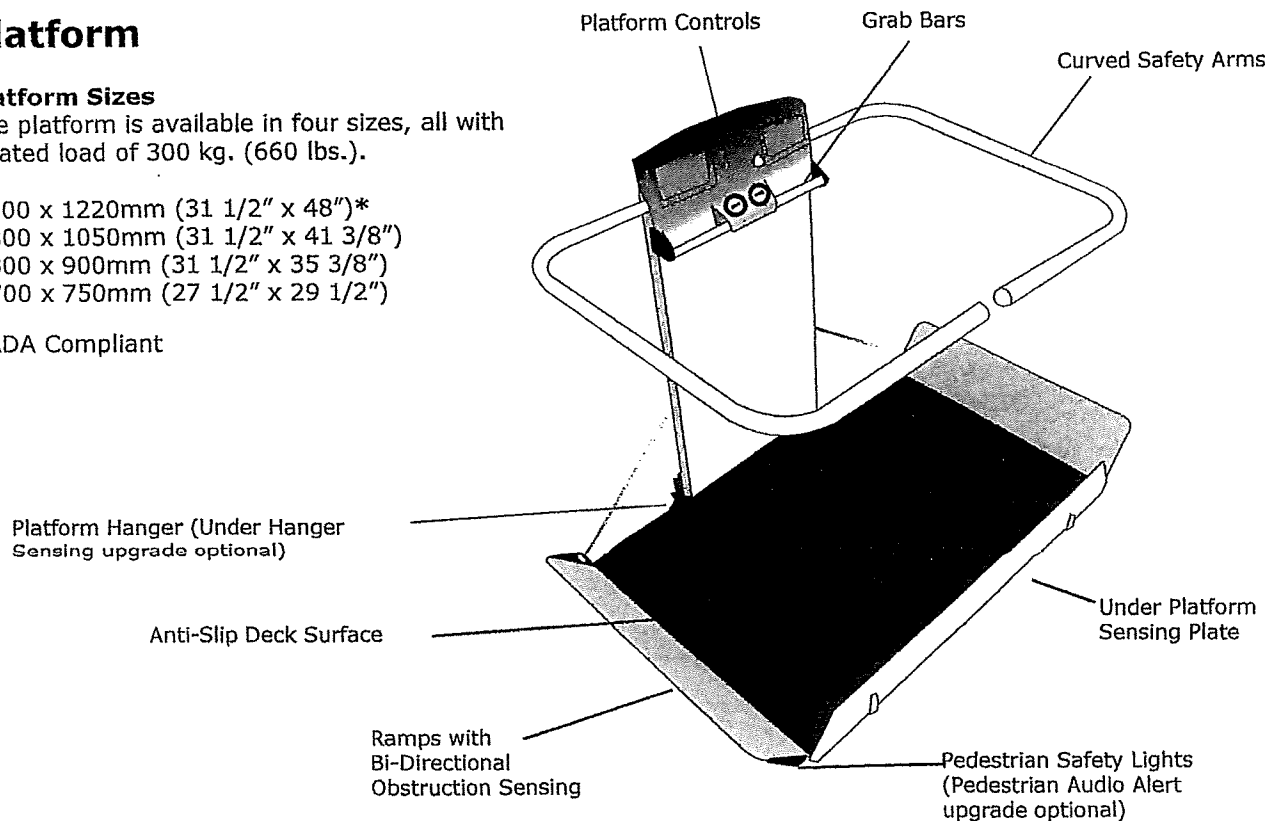
Platform

Platform Sizes

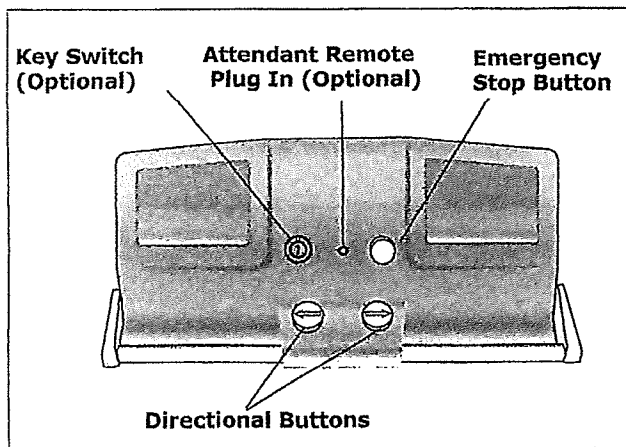
The platform is available in four sizes, all with a rated load of 300 kg. (660 lbs.).

- 800 x 1220mm (31 1/2" x 48")*
- 800 x 1050mm (31 1/2" x 41 3/8")
- 800 x 900mm (31 1/2" x 35 3/8")
- 700 x 750mm (27 1/2" x 29 1/2")

*ADA Compliant

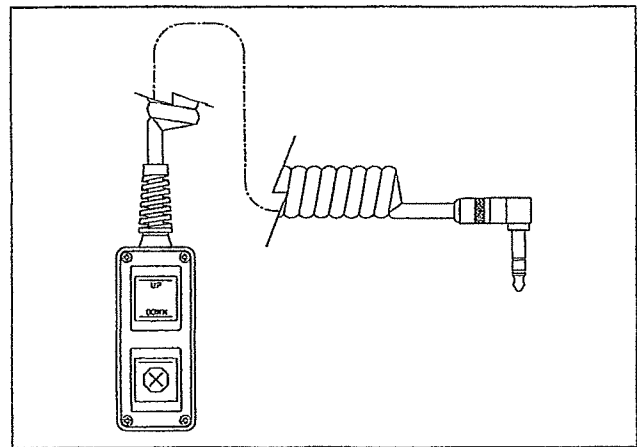


Platform Components



Platform Control Panel

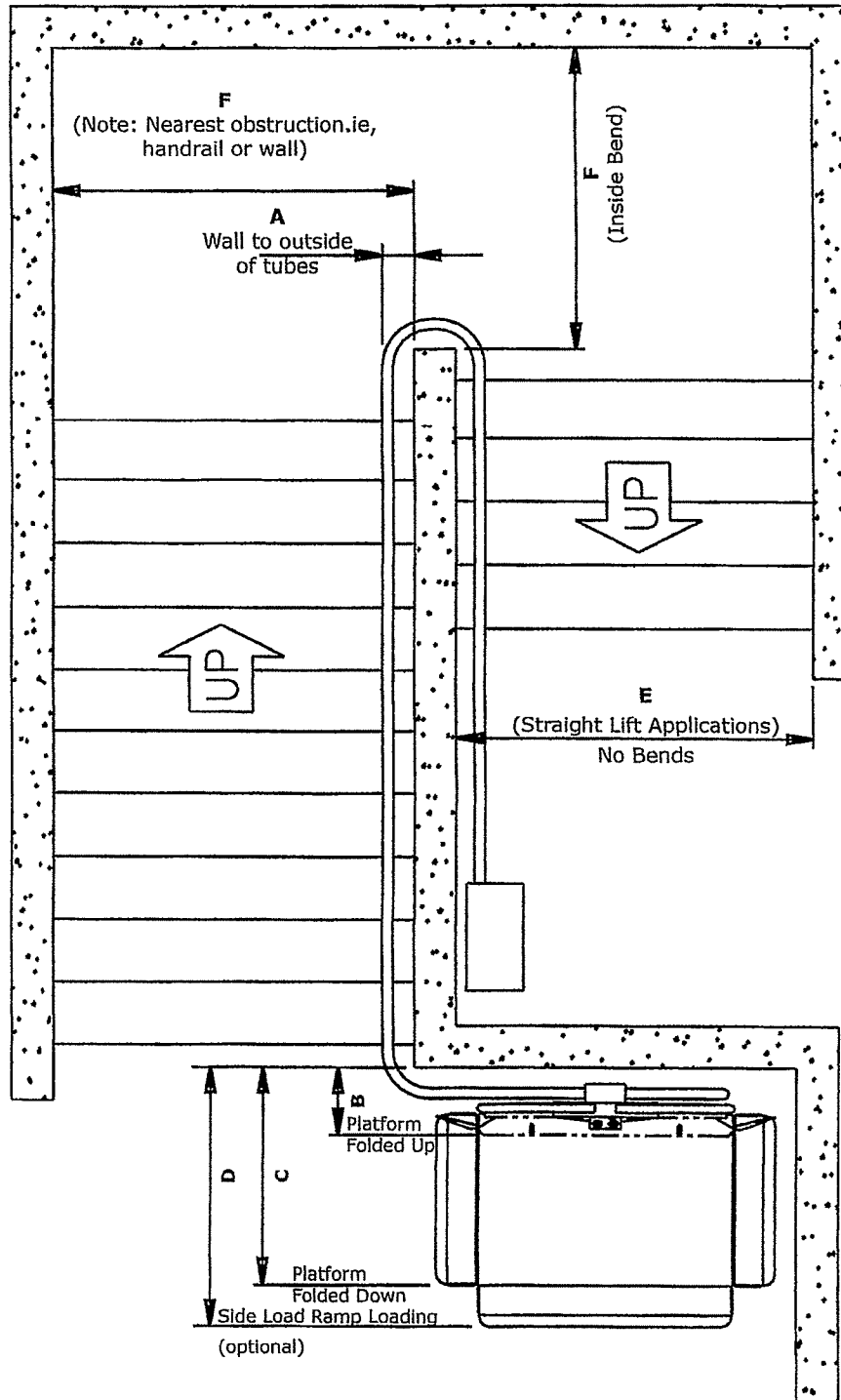
The durable and vandal resistant platform control panel is mounted to the platform hanger. The standard platform controls are permanently mounted and consist of two large illuminated constant pressure **Directional Buttons** for independent operation and an **Emergency Stop Button** (with illumination optional).



Optional Attendant Remote Control Unit

The platform can be equipped with an optional **Attendant Remote Control** that overrides the constant pressure **Directional Buttons** during attendant operation. The remote control unit can be removed when not required.

Required Turning Clearances



Stair Width Clearances and Platform Projection Dimensions





#1, 5611-54 Street
Cold Lake, Alberta
T9M 1R6
Ph (780) 594-4460 fax (780) 594-4480

March 17, 2020

Cold Lake Seniors Society
780-639-0065

Attn: Dusty

Re: Quote - Electrical Work – Lift & Light Installation

We are pleased to provide you with a quote for this project as per request to install power and plug for lift & to supply and install 6 LED lights.

Quoted Price \$2830.00 Plus G.S.T.

JIMCO ELECTRIC LTD.

Jim Urlacher

* Please note this quote is only valid for 30 days.

VENTURE ELEVATOR

Date: Feb 13, 20

Cold Lake Seniors Society
1301 8 Ave, Cold Lake, AB T9M 1J7

Attention: Andrea Geoffroy, Administrative Assistant
Phone: 780-639-0065
Email: coldlake@telus.net

Reference: Budget Price for One Garaventa Artira Stair Lift

Venture Elevator Inc. would like to thank you for the opportunity to submit our quotation for the supply and installation of one Garaventa Artira Handicap Lift. This lift will meet all present mandatory code requirements from the CSA-B355 code - Lifts for Persons with Physical Disabilities.

QUOTATION

We propose to install one (1) 660lb Garaventa Stair-Lift, Model GSL Artira inclined platform lift for straight and turning stairways. Lift consists of a tubular guide rail system, a folding platform that is moved along the guide rails by a rope sprocket drive system, overspeed safety system and call stations at each landing. Platform size to be 760mm by 1050mm. Loading to be from the front, side and rear of the platform. Motor will be a 2 H.P. electric motor with an integrated brake. 208-240 VAC, single phase, 50/60 Hz. on a dedicated 20 amp circuit. Normal operating speed shall be 20 feet per minute (6 m per minute).



Member of CECA



Features:

- Platform Security Lock
- Bi-directional ramp sensing, under platform sensing plate
- Attendant hand control
- Auto fold Platform
- Remote Platform Fold and Call
- Constant pressure Platform fold and Unfold
- Folding seat
- Dek-Lite (requires seat)
- Standard Drive Box
- 1 Audio Visual Alert

Inclusions:

- General Arrangement diagrams stamped by P. Eng
- Adearsa submission for installation permit
- Shipping to site

Times:

General Arrangement diagrams 3 weeks from receipt of signed contract, letter of intent or PO.

The current production lead time (subject to change) for an Artira lift is currently 8 weeks from receipt of approved final drawings.

Venture Elevator Inc. will provide a 1 year warranty on parts due to manufacture defects. The warranty will commence on the day the elevator has passed inspection from the governing authority for the public access.

Venture Elevator Inc. will conduct the installation of the elevator during regular working hours of the elevator trade. Overtime, if needed will be charged out at our normal billing rates.

By Others:

- Any required structural engineering to the walls, stairs or removal of railings.
- Ensure clear access for all elevator related material to enter the building.
- Ensure a clean, dry/moisture free environment, above freezing temperatures, for storage of all elevator equipment.
- 208-240 VAC, single phase, 50/60 Hz. on a dedicated 20 amp circuit to be brought to the stair way where unit is to be installed.



This Budget price is between Sixty-Five Thousand and Eighty thousand Dollars (\$65,000 to \$80,000) Plus applicable Taxes. This quotation is valid for 30 days.

NOTE: A proper site visit by a Venture Elevator representative will have to be conducted to confirm that this product will fit into the location prior to providing you with a firm price.

The lift will be professionally installed and adjusted by Venture Elevator Inc. trained personnel. The price further includes all submissions and inspections from the governing authorities.

Venture Elevator will supply one year (12 months) warranty maintenance.

This quotation, when accepted by initialing all pages and an authorized signature, shall constitute the contract between both parties, and all prior representations or agreements incorporated in this document are superseded.

If this agreement is acceptable, please complete below and initial all pages.
Fax to (250) 596-0449 or return signed copy via mail.

This proposal and contract are hereby signed and accepted.

Dated: Feb 13, 2020

Venture Elevator Inc. _____
Ron Sexton

Purchasers Acceptance:
Accepted by Authorized Representative:

Date: _____

Company Name: _____

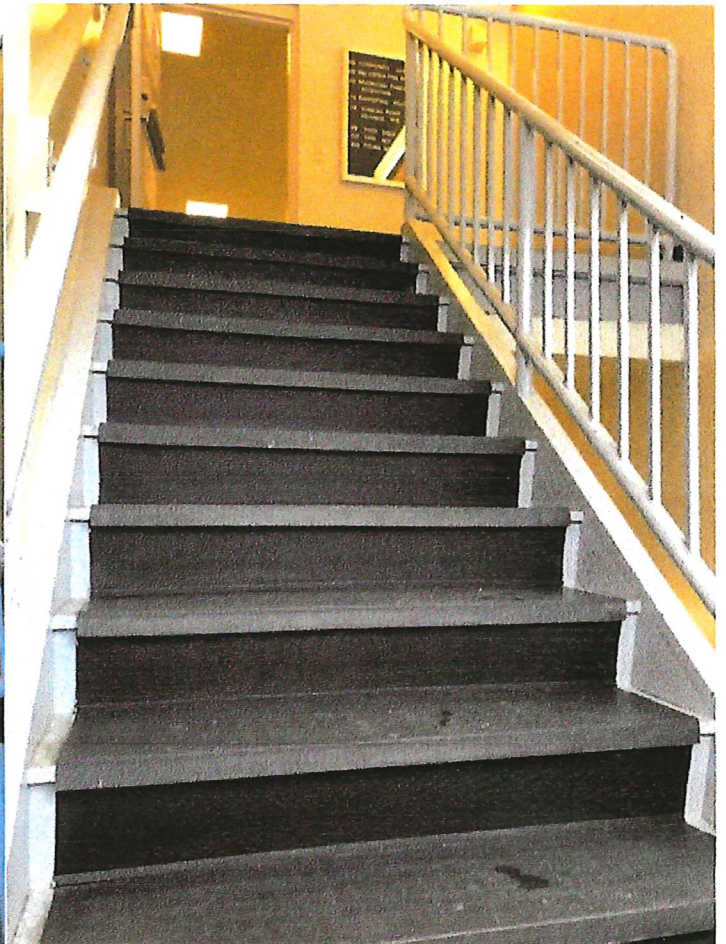
Authorized Signature: _____

Print Name: _____

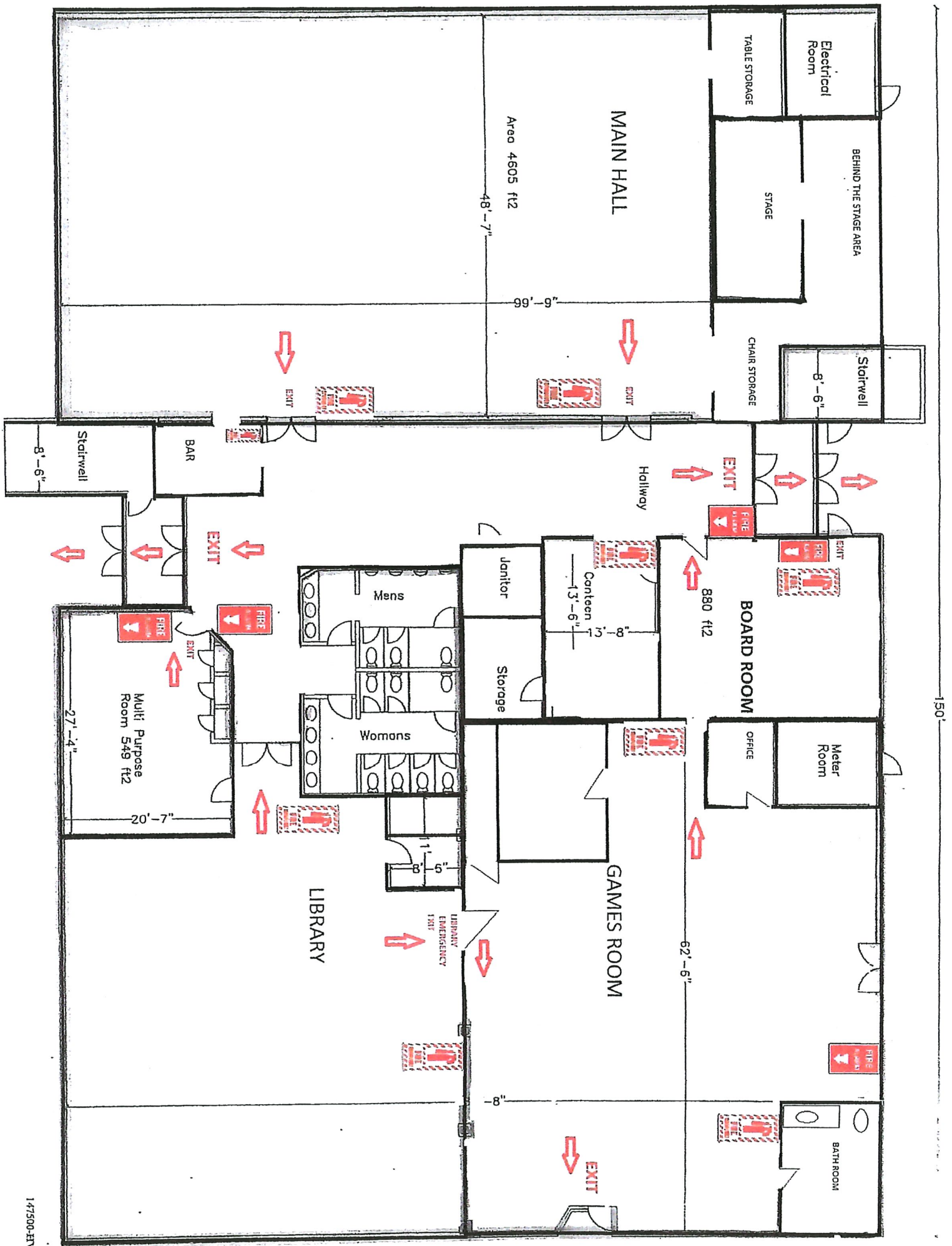


Member of CECA





main floor



2nd Flr.

