

Cold Lake Golf and Winter Club (CLGWC)



City Council Meeting 20 Nov 2012

Colonel J.R.P. Laroche
4 Wing Commander

- Background
- Current decisional environment
- What we have / have not
- Concept



OUTLINE

- Golf operations over the last decade
- The building
- Recent changes to our golf operations
- Wg inability to bridge gap until population grows enough to support



BACKGROUND

- Repayment of the building
- Long term ground repairs
- Ottawa no longer supportive of any losing Special Interest Activities (such as golf) thus pressuring to find a partner or shut down operations
- Thus my options:
 - 1) Find a partnership that can accept the fact that providing a service will cost some money; or
 - 2) Shut down golf operations starting next year



CURRENT DECISIONAL ENVIRONMENT

- WHAT WE HAVE

- A beautiful and challenging 18-hole golf course
- In great shape but will need long term investment
- A beautiful facility
- A profit making curling operations
- Additional space such as conference room
- The only groomed cross-country ski and snowshoe site in the area



WHAT WE HAVE / HAVE NOT

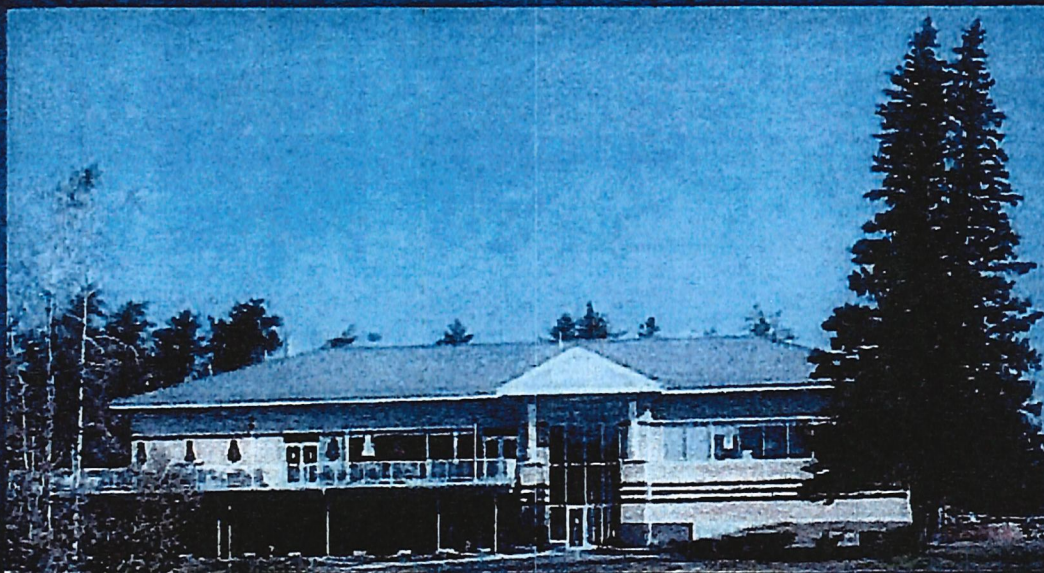
- WHAT WE HAVE NOT

- The financial means (non-public money) to pay for the building, course renovations and golf operations
- The ability to run a service (SIA) in deficit mode
- The ability to sustain golf operations until such a time as it may become more profitable



WHAT WE HAVE NOT

- A all-year long center for leisure:
 - Golf, curling, cross-country skiing, snow-shoeing, conference center
- A unique community service to a young and growing community
- A partnership for the benefit of all wing personnel and Cold Lakers



CONCEPT

QUESTIONS

