

COLD LAKE MUSEUMS 2021

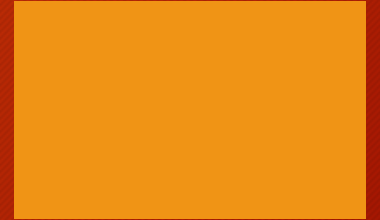
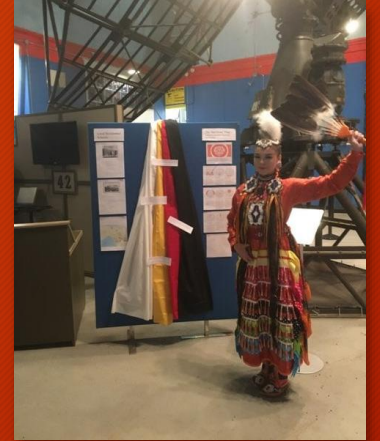
~Air Force ~Oil & Gas
~Heritage ~Aboriginal

OUR YEAR IN VISITOR NUMBERS...

- VISITORS
 - June- 191
 - July- 1224
 - August- 1633 inc open on Sundays
 - September- TRC day- 200
 - October- small group tour- 4
 - TOTAL= 3252
- Our best year saw 4800 people but included several tours of larger groups ie cadets, schools, summer camps, as well as a longer (full) season



Truth and Reconciliation Day September 30



THE COLD LAKE MUSEUMS IS...



Cold Lake Air Force Museum

A fully accredited Air Force museum



Oil & Gas Museum

An award-winning museum built by Grand Centre High School students



Heritage Museum

Telling the story of our brave pioneers.

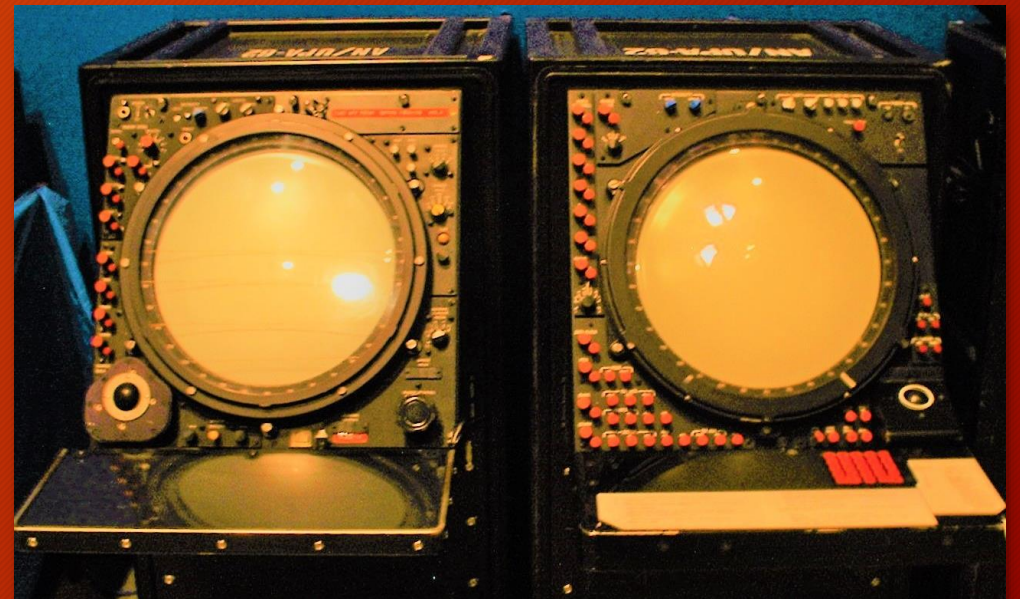


& our Aboriginal Museum

TELLING THE STORIES OF OUR INDIGENOUS PEOPLES.

HERITAGE DESIGNATION NORTHERN DEFENSE RADAR STATION

- The Radar Station was built in 1952, in conjunction with the Air Base to aid in the Cold War.
- The Radar Station provided ground to air radar support to pilots training in the CF-100 “Canuck” jet.
- The station stayed active throughout the Cold War as part of the Pine Tree line of early warning of any enemy forays into our airspace.
- This was a joint Canadian/American activity





In 1988, the Domes were removed and disposed of...

The Radar station became obsolete when the Cold War ended. While 42 Radar Squadron remained active, the Radar equipment went to electronics and a mobile unit was created to run out of the back of a truck.

HISTORIC DESIGNATION & WHAT IT MEANS...

- Historic Designation means we have a listing on the Alberta Historically designated places at Alberta.ca
- Access to funding especially for historic preservation and restoration of the site- have received several grants to paint and clean up the site.
- Limitation as to what we can do up here.
 - Cannot add buildings etc. must leave site as is but can restore it.
 - Can use the buildings for museum but not significantly alter the exterior
- Protection from demolition



WHY WE ONLY OPEN IN SUMMER MONTHS



THE LONG HALL (WAY)



Winter Sports Displays



Photos on display



Artifacts

All of these are susceptible, in varying degrees to humidity, fluctuations in temperature and light. If we can't control the environment, cool, dry and dark are preferable.

We also have ongoing work in Administration, updating galleries, training and other office work.

Can we open when it gets colder? **YES!**

HOWEVER... this is limited by Covid this year

But normally we would be able to do small tours for VIPs, special groups and schools.

We do have some Christmas hours planned with a possibility of opening the CLAFM.



OUR NEXT STEPS...

- We are always changing things up to keep things fresh and to add new information we have learned.
- We do have a project we are ready to start soon.
- The Grounds



LANDSCAPE MAINTENANCE



GROUNDSKEEPING- PRESENT & FUTURE

OBSERVATION TOWER

With people able to see the grounds from the tower we think they should be more kempt.

BIKE PARK

With more people coming up, travelling around the museum site, we want to make things more attractive and inspiring.

ABORIGINAL PROJECT

Looking to utilize the grounds for Aboriginal displays and activities.



TIMELINE...

From Assessment of Grounds to implementing landscaping, setting up outdoor displays, signage and all sundry, 4 years.



Military

g / CFB Cold Lake

Miscellaneous

Cold Lake High School
Cold Lake Off Campus School
United Way Days of Caring

Founding Members

Edward Brown
Saran Ahluwalia
Andy St. Amant
Robert (Jim) Farrell
Hank Hoeven
Joseph Green
Robert Kingsley
Roger Frigault

Volunteers

Jennifer Mate
Svala Dunn
Robert Nicks
Denis Gardiner
Bev St. Amant
Jean Motherwell

Staff

Robert Thompson
Heidi Roberts
Linda Dunn
Keri McCarthy
Heidi Gutterer
Jennifer Ross
Wanda Spence

Members

Captain Jody Morrisette
Major Paul Thobo-Carlson
Richelle Sikes
Steven Power
Paul Gemmeti
Lieutenant (N) Laurie Trepanier
Major Olivier Lefrancois
Dale Harrison
Stephen Purves
Keith Wohlgenuth
Meghan Thomas
Lance Roe
Pat Martell
Dave Michalko
Milad Asdaghi
Sarah McLeod
Sam Hooper
Sheryl Hunter
Major Jason Porteous
Major Kael "Kato" Rennie
Donna Gingras
Christine McWillis
Tim Fedyk
Deborah Miller
Major Jason Hartwig
Major Megan Harding
Major Robert Bowen
Robert Machatis
Captain Andrew Chen
Major Sylvain Fournier

784 (Didar Squadron
A & A G
Agnes G
Air Force
Alberta I
Alberta I
Alberta I
Ashcroft
B & R Eck
Baker-Pe
Canadian
City of Co
Cold Lake
Cold Lake
Cold Lake
Communi
Enbridge I
Flint Energ
Galaxy Oil
Grand Cen
Grizzly We
Husky Oil C

AND ESPECIALLY TO THE CITY OF COLD LAKE...

- Above and beyond the support in Operational Funds
 - Work on our grounds and road up to the museum
 - Work on our parking lots
- Support in taking care of our buildings and facilities
 - Plumbing
 - Roof repairs
 - Incidentals



ASK and you shall...

Ask #1: Continued Operational Support as per the proposed budget which includes a 2% inflation factor.

Ask #2: We are asking that the city take an active part in maintaining the grounds, until such time as we have implemented our landscaping plan.

Ask #3: Consideration of repaving the main parking lot.

Ask #4: Consideration to funding the Capital Items - next slide.

CAPITAL FUNDING

- Asking: \$50,000 per year
- Sometimes things come up:
 - Roofs need repairing
 - soffit/ fascia/ siding need repairs
 - Doors need repairing or replacing
- GROUNDSKEEPING project



Budget Diagram

SUMMING UP...

- The Cold Lake Museums is actively working to keep the history of the area alive.
- We are asking the City of Cold Lake to continue to support us through funding and in-kind support.

