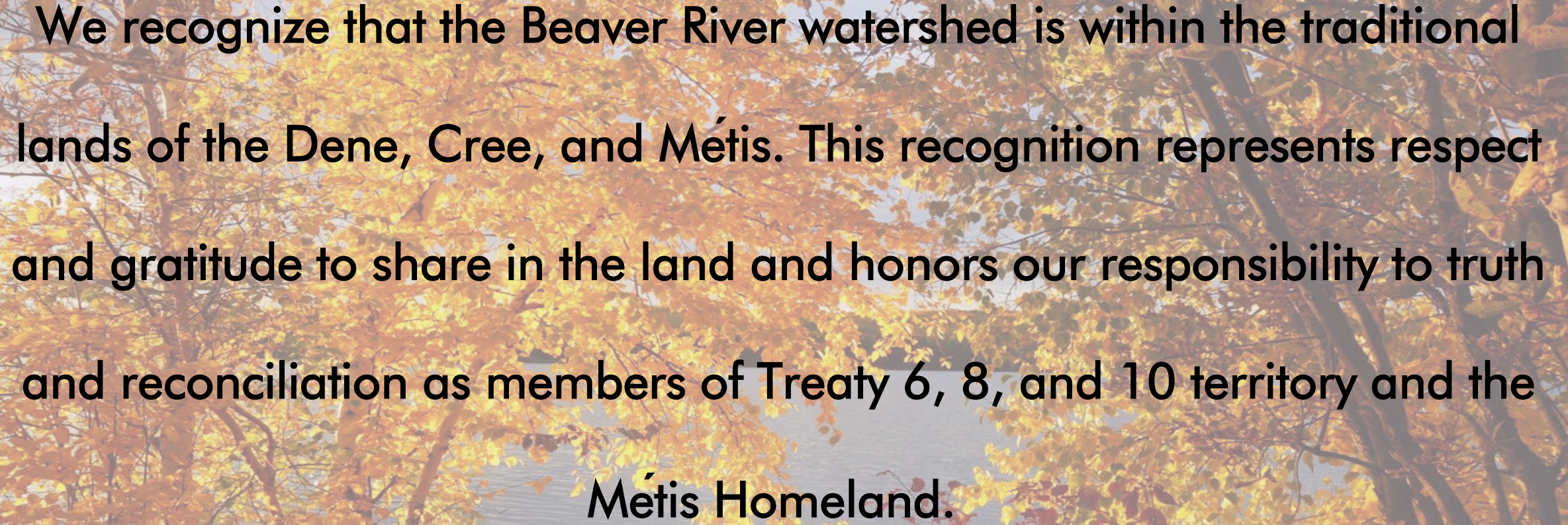


A silhouette of a person in a kayak, viewed from behind, holding a paddle. The person is on a body of water, and the background is a dramatic sunset with a sky filled with orange and yellow clouds. The sun is low on the horizon, creating a strong reflection on the water. The overall mood is peaceful and serene.

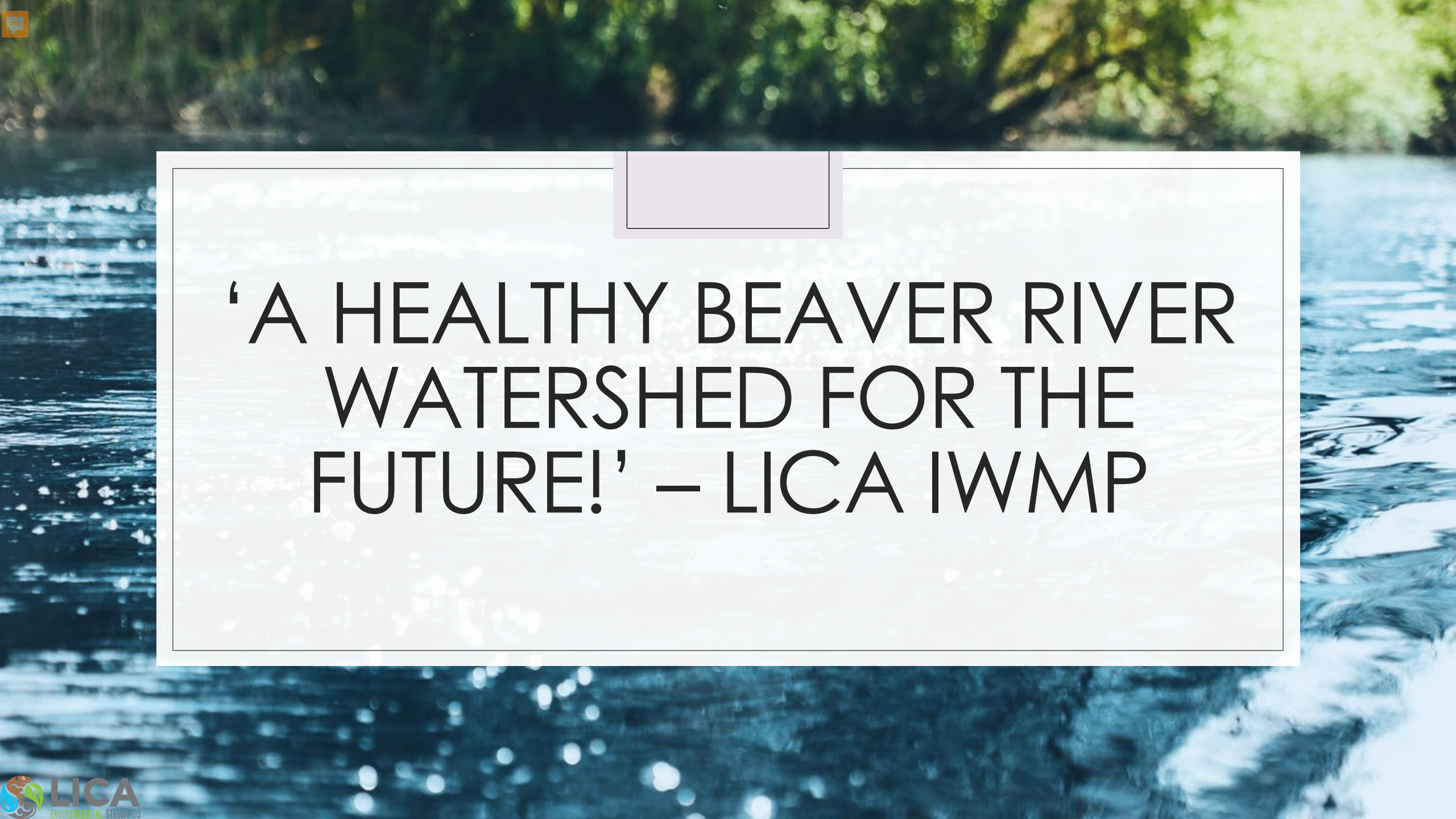
Lakeland Industry & Community Association (LICA)

Environmental Coordinator: Kayla Hellum

August 22, 2023



We recognize that the Beaver River watershed is within the traditional lands of the Dene, Cree, and Métis. This recognition represents respect and gratitude to share in the land and honors our responsibility to truth and reconciliation as members of Treaty 6, 8, and 10 territory and the Métis Homeland.



‘A HEALTHY BEAVER RIVER
WATERSHED FOR THE
FUTURE!’ – LICA IWMP

5 Implementation Priorities of the IWMP

1. Develop and implement a long-term surface water quality monitoring program in collaboration with all stakeholders to leverage resources and achieve mutual goals.
2. Collaborate to implement BMPs and land use strategies to protect water quality and riparian health, particularly where riparian intactness scores are below the target and threshold and water quality is a concern.
3. Seek opportunities to support riparian restoration where assessments indicated health condition does not achieve targets and/or thresholds.
4. Collaborate with stakeholders to prioritize and develop a fishery monitoring program, including key habitats. Update fisheries management objectives prior to tourism and recreation planning (proposed in the Cold Lake Sub-Regional Plan).
5. Prioritize the completion of floodplain maps for watercourses and high-water marks for lakes to support implementation and enforcement of urban development setbacks through policy and planning.

All IWMP resources can be found on the [LICA Website](#)!

Initial IWMP Implementation Projects

Riparian Health Campaign

LICA's Little Environmental Stewards
Program

Fisheries Workshop

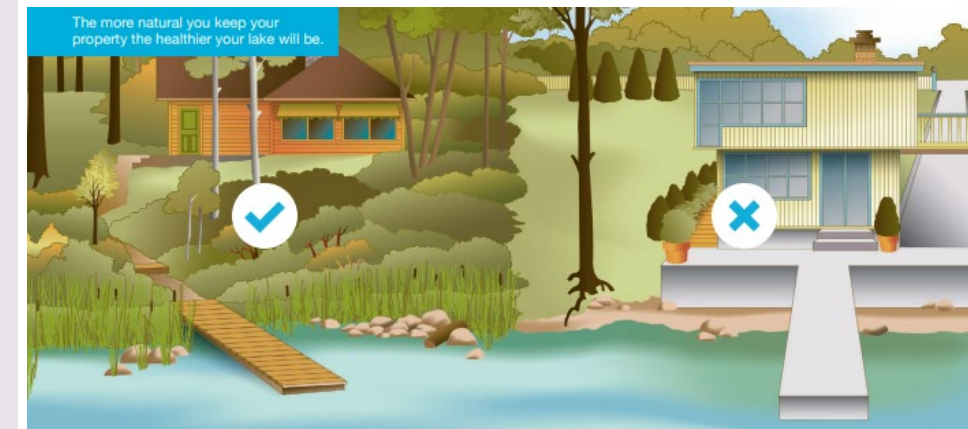
Aquatic Invasive Species Fund

Species at Risk Flipbook

Ongoing Water Quality Programs:
CreekWatch & LakeWatch

Riparian Health Campaign

- LICA is currently developing a Riparian Health Campaign!
- This campaign will raise awareness about riparian areas and the role it plays in watershed health!
- Waterfront owners and those who have wetlands on their property that sign up to participate in this campaign, will receive educational resources to support riparian area knowledge. They will be provided with a bundle of tree seedlings to kick-start their healthy riparian area and a small sign stating their commitment to riparian health!
- We are excited to implement this campaign next year throughout the region!



LICA's Little Environmental Stewards Program

LICA is currently developing a new program named: LICA's Little Environmental Stewards.

This program will be aimed at youth (grades 4-5) but will be offered in the summer to families! This program will provide hands-on education at three different workshop stations:

1. Water Quality, Water Quality Indicators & Fish Habitat
2. Learning about Plants and Animals in our Region
3. Air Quality Monitoring in the LICA Region!

This program will be offered as a 'field day' to teach youth about the environment that they live in! A variety of activities will accompany each workshop station to support well-rounded education on various aspects of the environment!

We are looking forward to offering this program throughout the region starting next spring!



Fisheries Workshop



- LICA invites you to a two-day fisheries workshop on September 16th (1 – 4:30 pm), and September 17th (9 am – 3 pm).
- Location: The LICA Office, and Moose Lake Bonnyville Beach.
- Workshop Layout:
 - On Saturday, preserved fish and photos will be used to teach participants, at the LICA office, key morphological features to help identify the fishes.
 - Sunday will be a field day at Moose Lake to solidify the identification techniques learnt by giving participants the opportunity to handle live fish while discussing appropriate fish habitats (Nets will be set on Saturday by organizers to catch live fish).
- Only 15 spots are available! There is no cost to attend.
- If you are interested in participating in this workshop, please RSVP to Kayla @ watershed@lica.ca

CLEAN + DRAIN + DRY YOUR BOAT



Props, boats and natural ecosystems can be ruined by zebra mussels and other aquatic invasive species. Take a few simple steps to preserve our lakes and fisheries: **CLEAN** off the plants and debris, **DRAIN** bilges and ballast, and **DRY** any wet areas of your boat.



ZEBA MUSSELS



QUAGGA MUSSELS



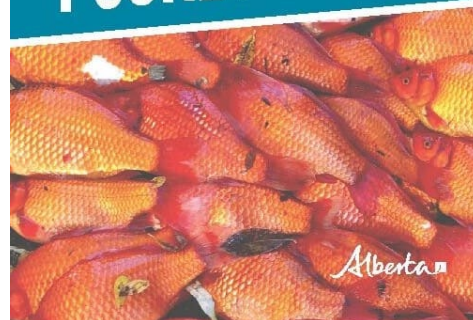
EURASIAN WATERMILFOIL

DON'T LET THEM CATCH A RIDE
STOP AQUATIC HITCHHIKERS

TO REPORT INVASIVE SPECIES:
1-855-336-BOAT (2628)
esrd.alberta.ca



AQUATIC INVASIVE SPECIES POCKET GUIDE



Aquatic Invasive Species Fund

LICA is applying for the Federal *Aquatic Invasive Species Fund*, for the Beaver River watershed.

We feel strongly that the following project components will bring immense value to the Beaver River watershed.

1. Implement an Aquatic Invasive Species (AIS) monitoring program at a variety of lakes in the watershed. Testing will be completed for a variety of invasive species.
2. Offer a voluntary public boat cleaning station at different locations during high-traffic weekends for lake users.
3. Increase dispersal of AIS educational resources.
4. Installation of AIS educational signage at priority lakes.
5. Implement AIS control measures where necessary.

LICA hopes to be a successful recipient of this funding! If successful, the project will commence in April 2024.

Species at Risk Flipbook

- LICA is currently developing an identification flipbook to raise awareness of Species at Risk in the LICA region.
- There are currently, 1 amphibian, 4 mammals, 16 birds, and 1 fish, listed as Species at Risk in Alberta that inhabit the LICA Region for all or part of their life.
- This flipbook includes identification tips, habitat information, and the current threats for each species.
- This resource will be dispersed throughout the region to support education and awareness of Species at Risk.



Short-eared Owl



Canadian Toad



Loggerhead Shrike



Cape May Warbler



Woodland Caribou



CreekWatch

- In partnership with the RiverWatch Institute of Alberta, LICA offers the CreekWatch program in the area!
- CreekWatch is a community-based environmental monitoring program that teaches volunteers the management of their local waterways. Volunteers use portable lab kits to sample creeks of interest to them to infer the health of the system!
- LICA has offered this program over the summer to different communities and organizations!
- Field days this summer were spent with Kikino Métis Settlement and Buffalo Lake Métis Settlement!

Thank you to our CreekWatch volunteers & participants!

Alberta Lake Management Society: LakeWatch

- LICA funds the LakeWatch program, through its Industry partners.
- Up to 10 lakes annually, are monitored for water chemistry, invasive Species, metals and water clarity.
- All LakeWatch reports can be found on the LICA Website under the resource tab.
- This year: Amisk, Crane, Laurier, Minnie, Moose, Muriel, Pinehurst, Skeleton North, Skeleton South and Touchwood Lakes are included in the monitoring program.
- Volunteers utilize their boats to assist the LakeWatch technician in sampling.

Thank you to our LakeWatch volunteers!



Cold Lake Priorities

- Where does the City of Cold Lake see itself fitting within IWMP Implementation?
- Does the City of Cold Lake have any projects that they would like to collaborate with LICA on?
- Does the city of Cold Lake have any questions for LICA?