



# Hope's Cradle

## Construction Requirements

**A GEMS FOR GEMS INITIATIVE TO SUPPORT  
THE SAFE SURRENDER OF INFANTS**

# ***Table of Contents***



- 3) Exterior of Hope's Cradle**
- 4) Hope's Cradle Cabinet & Electrical Panel**
- 5) Electrical Panel Specifics**
- 6) Interior of Hope's Cradle Cabinet**
- 7) Exterior Hope's Cradle Door Plan**
- 8) Interior of Hope's Cradle Cabinet**
- 9) What we need from you**
- 10) Questions we need answered**
- 11) We need your help**

# *Exterior of Hope's Cradle*



The exterior of the door is set into a brick wall that was cut to accommodate the cradle door. It is finished with aluminum cladding to be maintenance free.

When the cradle is set, the door can be opened to place the baby inside the cradle once the door is closed the door locks to the outside world.

The exterior door automatically locks and stays locked. In the instance of a total power loss, the door remains locked, so the building remains secure from unwanted entry.

# *Hope's Cradle Cabinet and Electrical Panel*



Photo on the left:

This is the cabinet that would be installed inside where the hole will be cut for the exterior cradle door.

Photo on the right:

The electrical panel interior houses all the electrical components for the cradle. The “Door Locked” will light up as shown, once the door has been opened/closed to indicate it has been opened. This happens when the exterior doors electric strike lock goes into the locked position. The “System On” tells you that power is present to the whole unit.

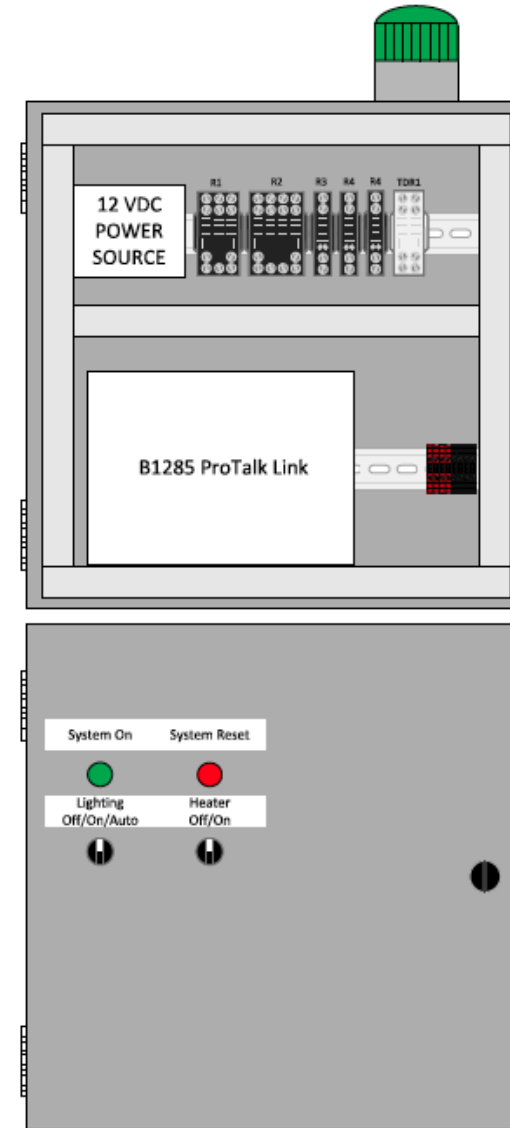
The “Door Reset” button must be pressed to release the exterior door once it has been locked and will reset the lock to remain unlocked until used again.

The “Lights” and “Heater” knobs are as expected and turn on the lights or heater.



# *Electrical Panel Specifics*

- The cost on the panel is fixed if the main power panel is within 50 feet of the location of the cradle. If its is past that range, significant price increases could be incurred which would have to be covered by the host location.
- “The ProTalk Link provides a flexible, effective solution to a wide variety of alarm monitoring situations. Alarm notifications can be sent via phone, text, email, radio or PA system. Remote alarm acknowledgement, system interrogation and relay control is possible via phone and text.”
- The ProTalk Link is an add-on option for an additional \$2000 as this would be a self-sufficient monitoring system and there would be no additional monthly costs. Another added benefit to this add-on is it also means that when your teams are testing the cradle, doing tours of the station or showing the cradle, your team is in control of who can shut it on and off; which is a help as sometimes the third-party alarm companies will mess up and still put out an emergency call even when they are notified that testing is happening. If your location chooses not to go this route with the ProTalk; then the monthly costs of monitoring will be ongoing and cost around \$30 to have this alarm set up to your stations existing system.





# *Interior of Hope's Cradle Cabinet*



Photo on the left:

This is the interior of the Hope's Cradle cabinet. The top portion of the cabinet stores some of the electrical components. The middle cabinet houses Hope's Cradle, lit, heated, monitored and secured. The bottom of the cabinet is empty. The interior part of the cabinet may be modified if needed.

Photo on the right:

The interior Hope's Cradle door does have a lock on it to secure access to the fire station/building from the exterior door.



# Exterior Hope's Cradle Door Plan



Door Machining Sheet	
Nominal Width: 28"	
Hinge Gap: 1/8"	
Strike Gap: 1/8"	
Actual Door Width: 27 3/4"	
Nominal Height: 28"	
Top Gap: 1/8"	
Undercut: 1/8"	
Actual Door Height: 27 3/4"	
Thickness: 1 3/4"	
Catalog: Vision	Core: POLYS
Series: LS	Seam: LS
Matl: 18 ga. A40	Edge:
Finish:	Top:
Label: <None>	Bottom:
Qty	Hardware Details
2	Stanley BB1409NRP (4.5" x 4") C26D Prep: Hinge, Regular Weight - 4 1/2"
1	Schlage ALX80 P6 -SAT-626 - RHR Prep: Lock, 161 Lever
1	LCN 1461 RWPA 689 1 3/4" Prep: Closer, Surface - PA Mount
Prep for "Baron, Pre-2015 (Imperial)" locations.	

Type: F

1 Opening LHR 1	F16 5 3/4 28" x 28" (32" x 32" OUTSIDE) x EMA 2 PER SIDE
	LS20 - 2'4" x 6'8" x RP * CUT TO 27 3/4"

These are the plans for the exterior door for Hope's Cradle.

The exterior door measurements are 28" x 28". Clearance around the door of 2-3 feet would be ideal!

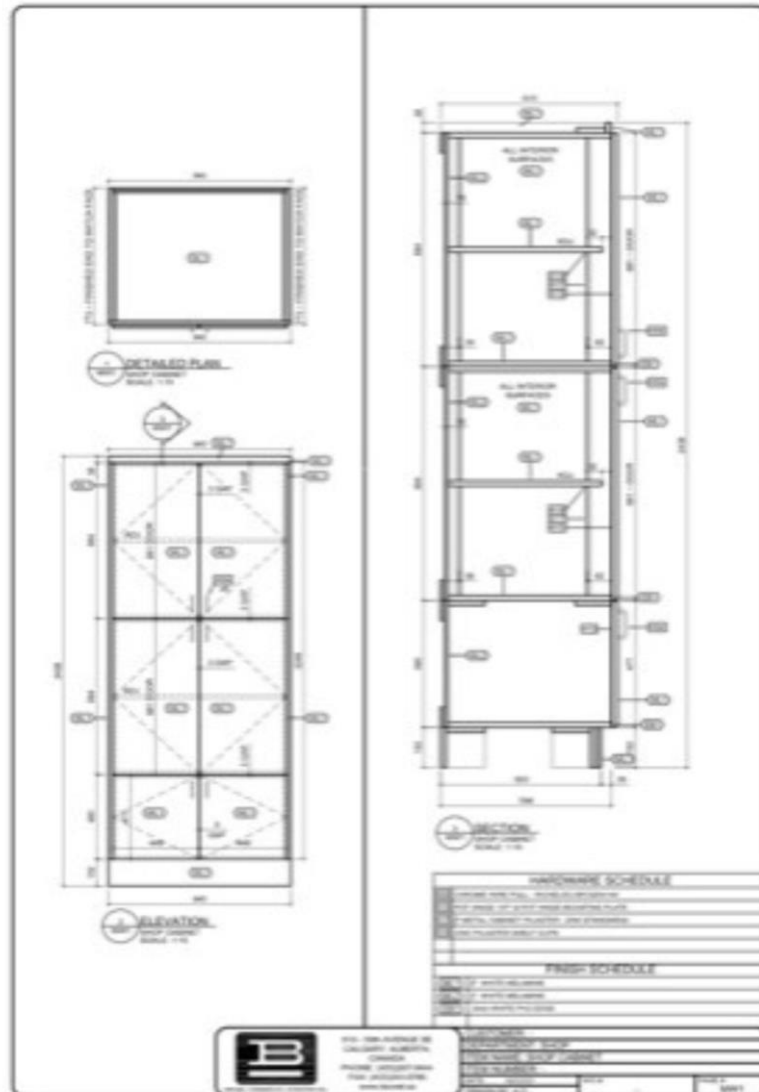
## Questions:

1) Which way would you like the exterior door to open, left to right or right to left?

2) Where on the building would you like the door installed?

(We will require photos of the location that placement is preferred.)

# *Hope's Cradle Cabinet Plans*



This is the standard Hope's Cradle cabinet.

This cabinet is 36" wide by 8' tall.  
Clearance of 2-3 feet on either side of the cabinet would be ideal!

## **Questions:**

- 1) Where will we be installing the interior cabinet?  
(We will need photos of the interior location.)**
- 2) What is the distance from the cradle to the electrical panel?**
- 3) Which way would you like the interior cradle door to open.  
Left to right or right to left?**





***What we need  
from you!***

# ***What we need from you***



## ***Questions we need answered:***

- 1) Which way would you like the door to open, left to right or right to left?
- 2) Where on the building would you like the door installed? (We will require photos of the exterior location)
- 3) Where will we be installing the interior cabinet? (We will require photos of the interior location)
- 4) What is the distance from the interior of the cradle to the electrical panel in the building ?
- 5) Which way would you like the interior cradle door to open. Left to right or right to left?
- 6) In the event of power loss does the building have a back up power supply?
- 7) Does the building currently have a monitored alarm system?

# ***We need your help!***



- We have successfully launched '**HOPE'S CRADLE**' in collaboration with a fire station just outside the Calgary city limits, and in Landmark, MB as locations like these, have been among the most utilized in the United States by all women due to a perception of increased anonymity.
- The Strathmore Fire Department is committed to us. Captain Eric Alexander will be continuing with Gems for Gems as we continue to scale this resource across Canada. We are not limited to only fire stations to house a cradle.

***\*Gems for Gems is a well connected, highly visible, public organization with an ambassador team of over 150 people across Canada as well as celebrity support. We are all here for you and your team, to save the lives of babies in your community!***