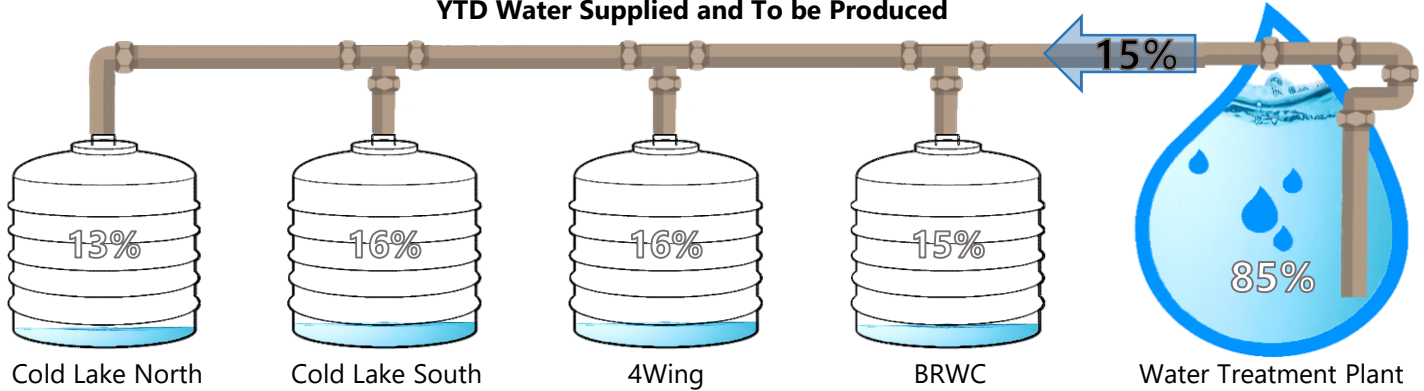


YTD Water Supplied and To be Produced

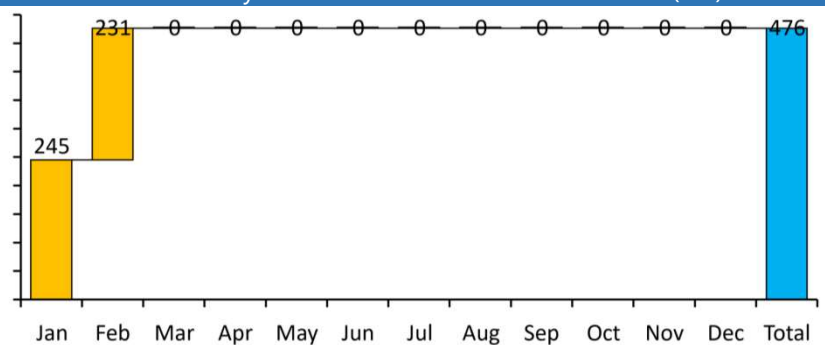


Supplied	Feb	YTD
CL North	53 ML ▲ 10% PY	111 ML ▲ 6% PY
CL South	63 ML ▼ -3% PY	133 ML ▲ 2% PY
4Wing	42 ML ▼ -2% PY	86 ML ▲ 2% PY
BRWC	72 ML ▼ -1% PY	146 ML ▲ 4% PY

Production	Feb	YTD
North	125 ML ▲ 4% PY	255 ML ▲ 3% PY
South	106 ML ▲ 13% PY	221 ML ▲ 0% PY

Total **231 ML ▲ 8% PY** **476 ML ▲ 2% PY**

WTP Monthly and YTD Cumm. Production Trend (ML)

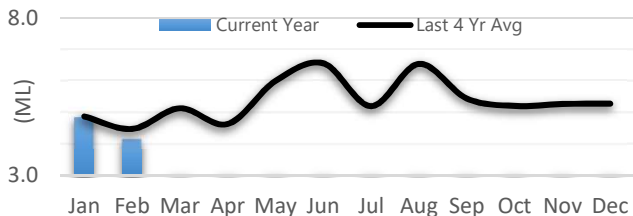


Truck Fill Station (ML)



Feb 4 ML ▲ 12% PY

YTD 9 ML ▲ 10% PY

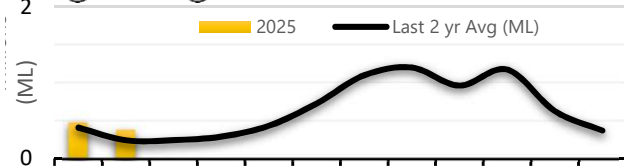


Septic Station aka Muffin Monster



Feb 381,790 L ▼ -27% PY

YTD 0.86 ML ▼ -30% PY

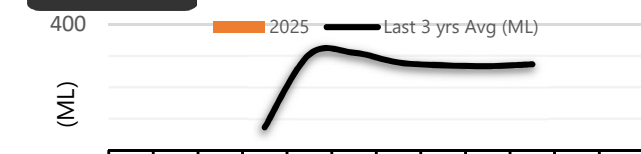


Lagoon Discharge (ML)

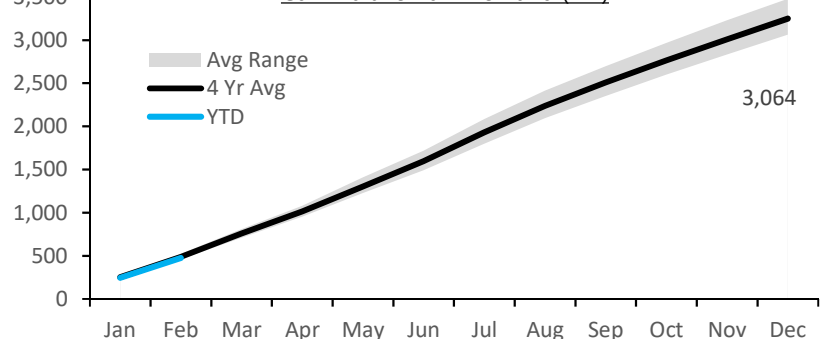


Feb ML 0%

YTD 000 ML 0%

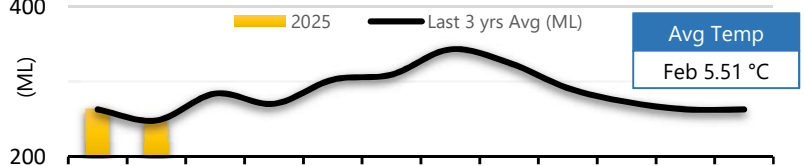


Cummulative Bulk Demand (ML)



Raw Water Diversion

	Feb	YTD
Totals (ML)	248 ML ▼ -1% PY	513 ML ▲ 1% PY
Avg Rate (ML/day)	8.87 ML/d ▲ 2% PY	8.70 ML/d ▼ -6% PY



Avg Temp
Feb 5.51 °C

Building # 9 Outflow (ML)

Feb 134 ML ▼ -3% PY

YTD 291 ML ▲ 2% PY

