



City of
Cold Lake



CL MEDICAL
CLINIC

Presented by:

Kevin Nagoya, Chief Administrative Officer

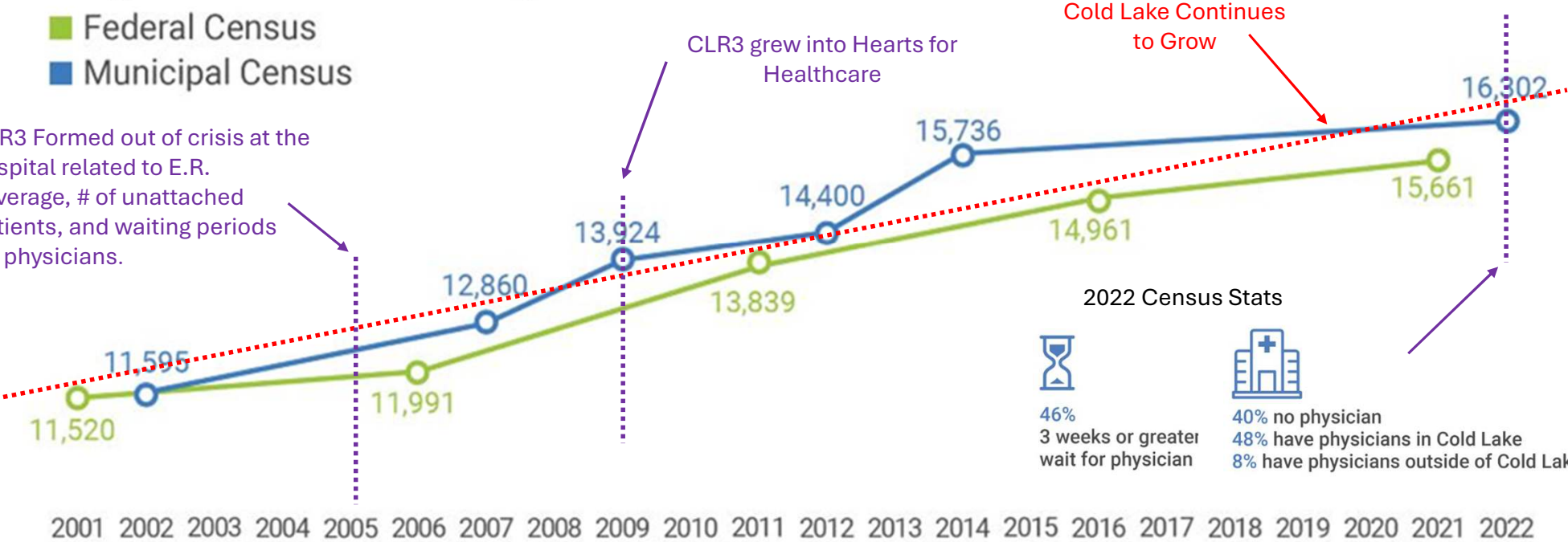
City of Cold Lake Population

■ Federal Census
■ Municipal Census

CLR3 Formed out of crisis at the hospital related to E.R. coverage, # of unattached patients, and waiting periods for physicians.

CLR3 grew into Hearts for Healthcare

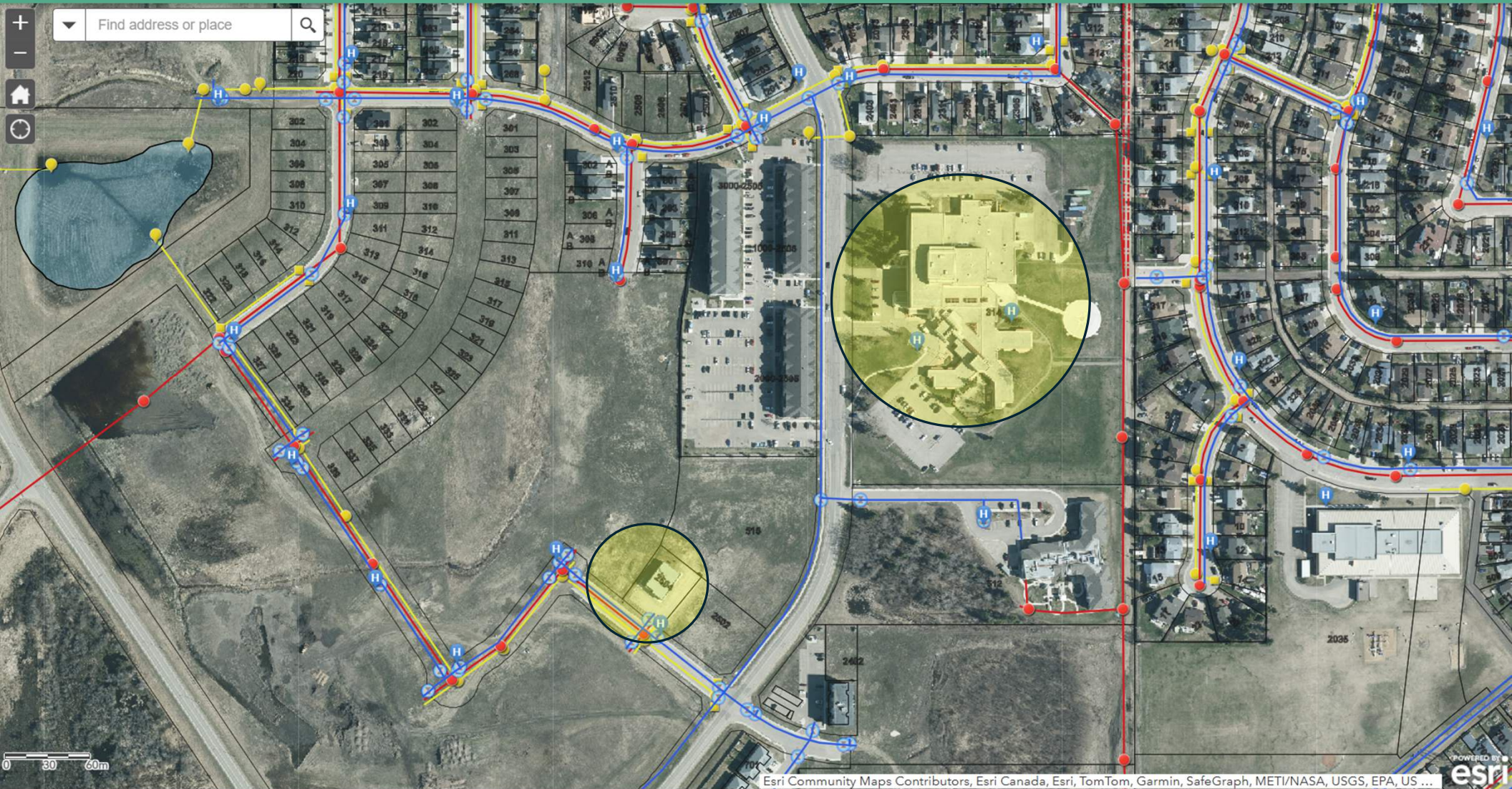
Cold Lake Continues to Grow

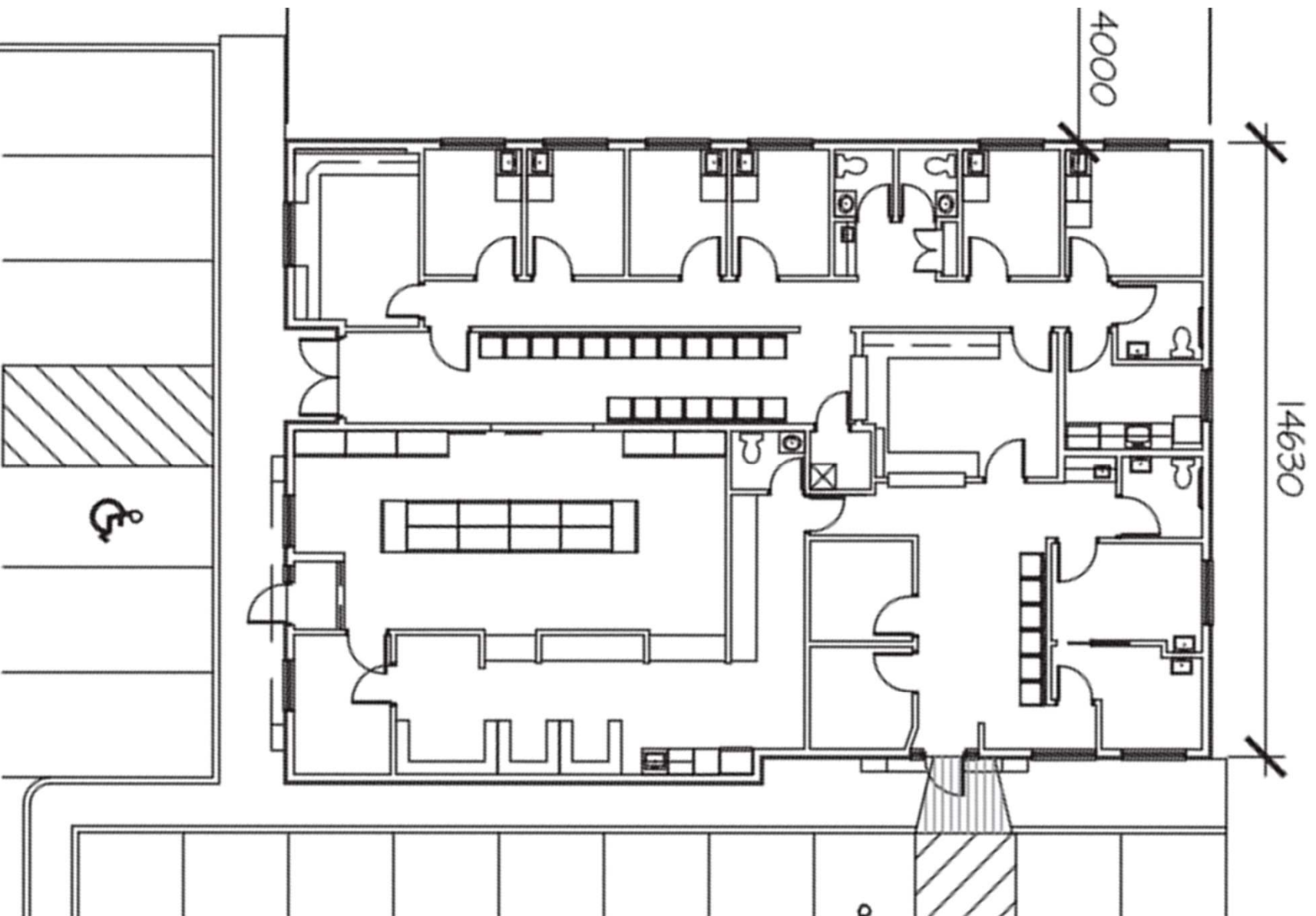




COLD LAKE PRIMARY CARE MEDICAL CLINIC LTD.

City of Cold Lake Infrastructure Map

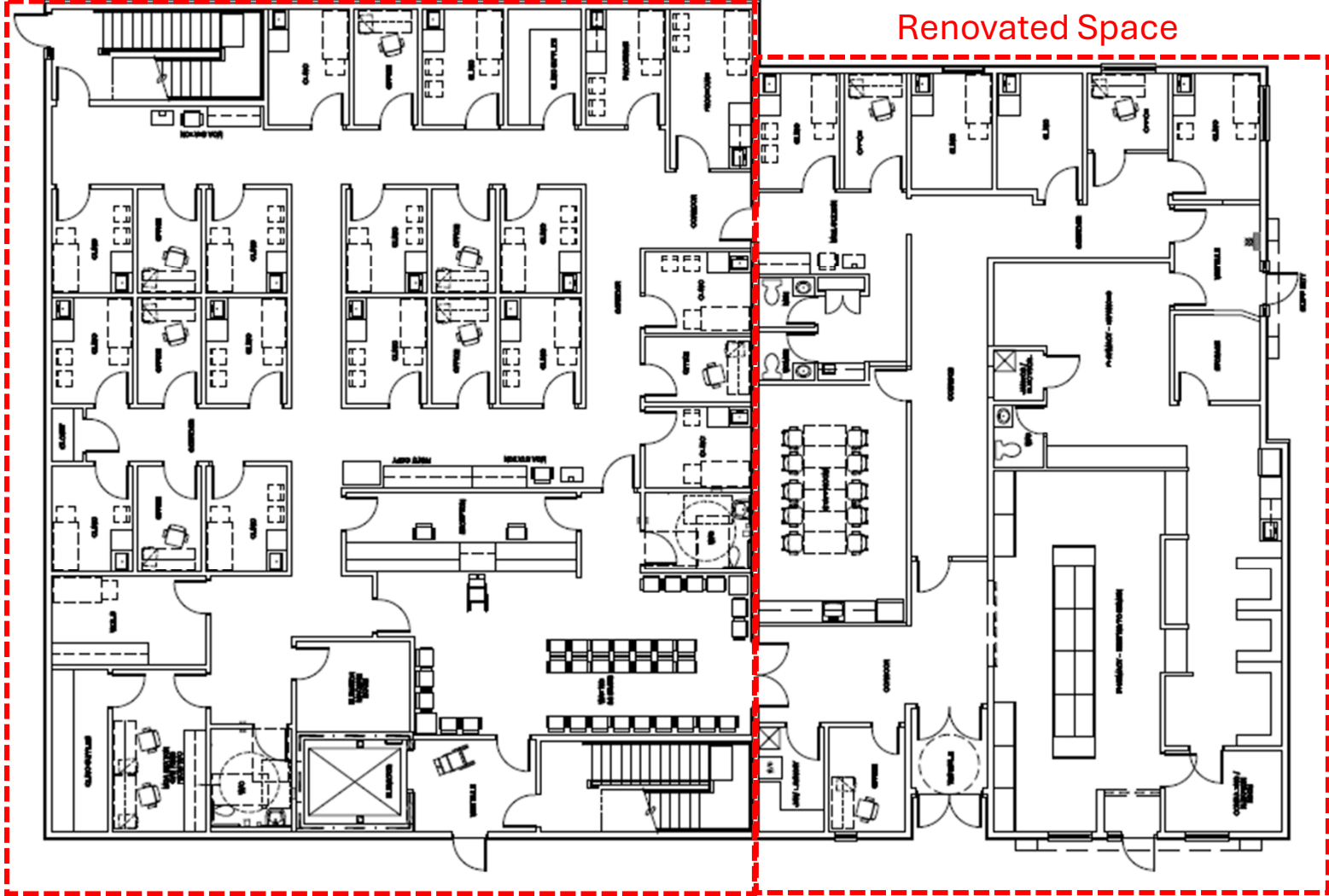






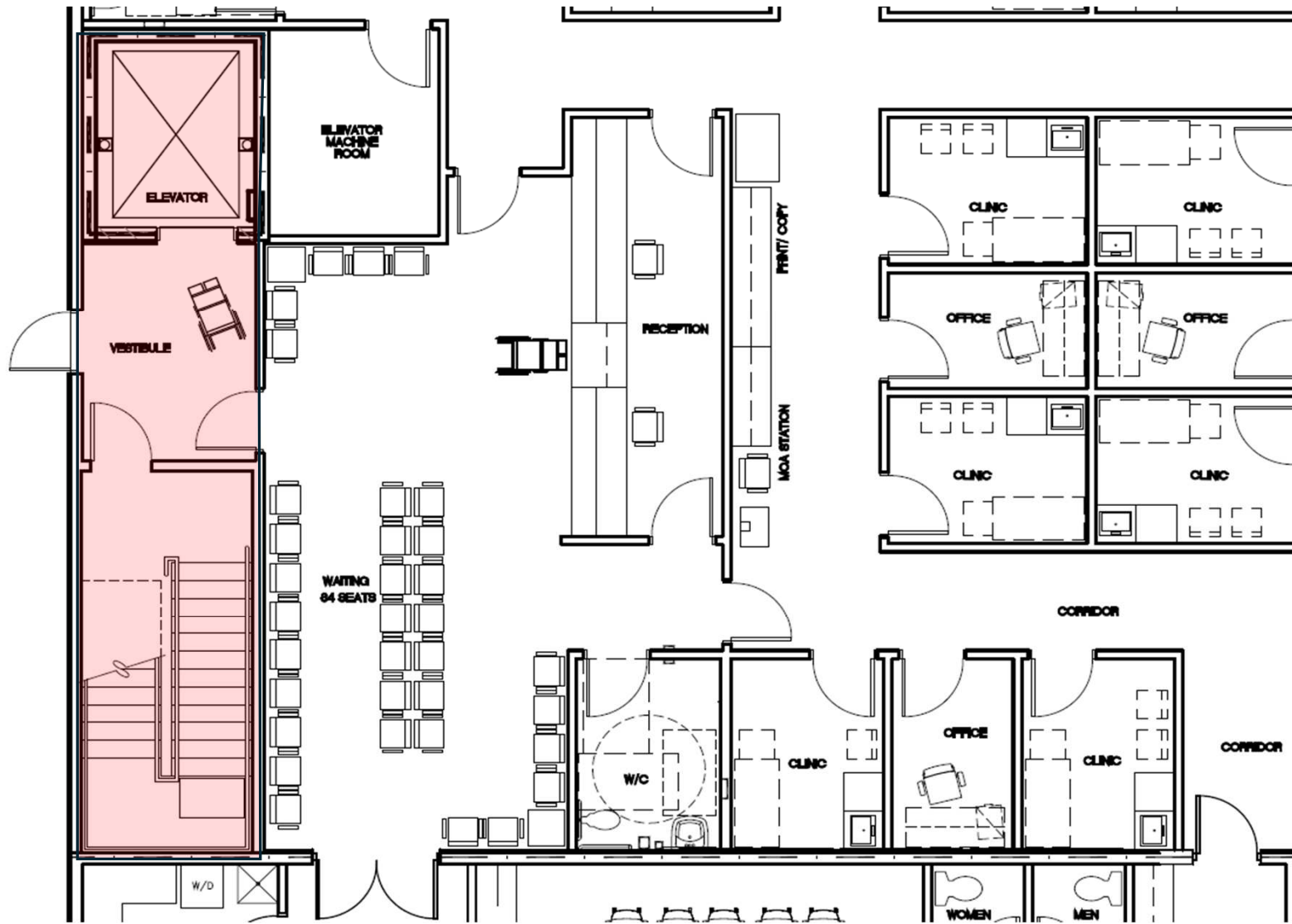


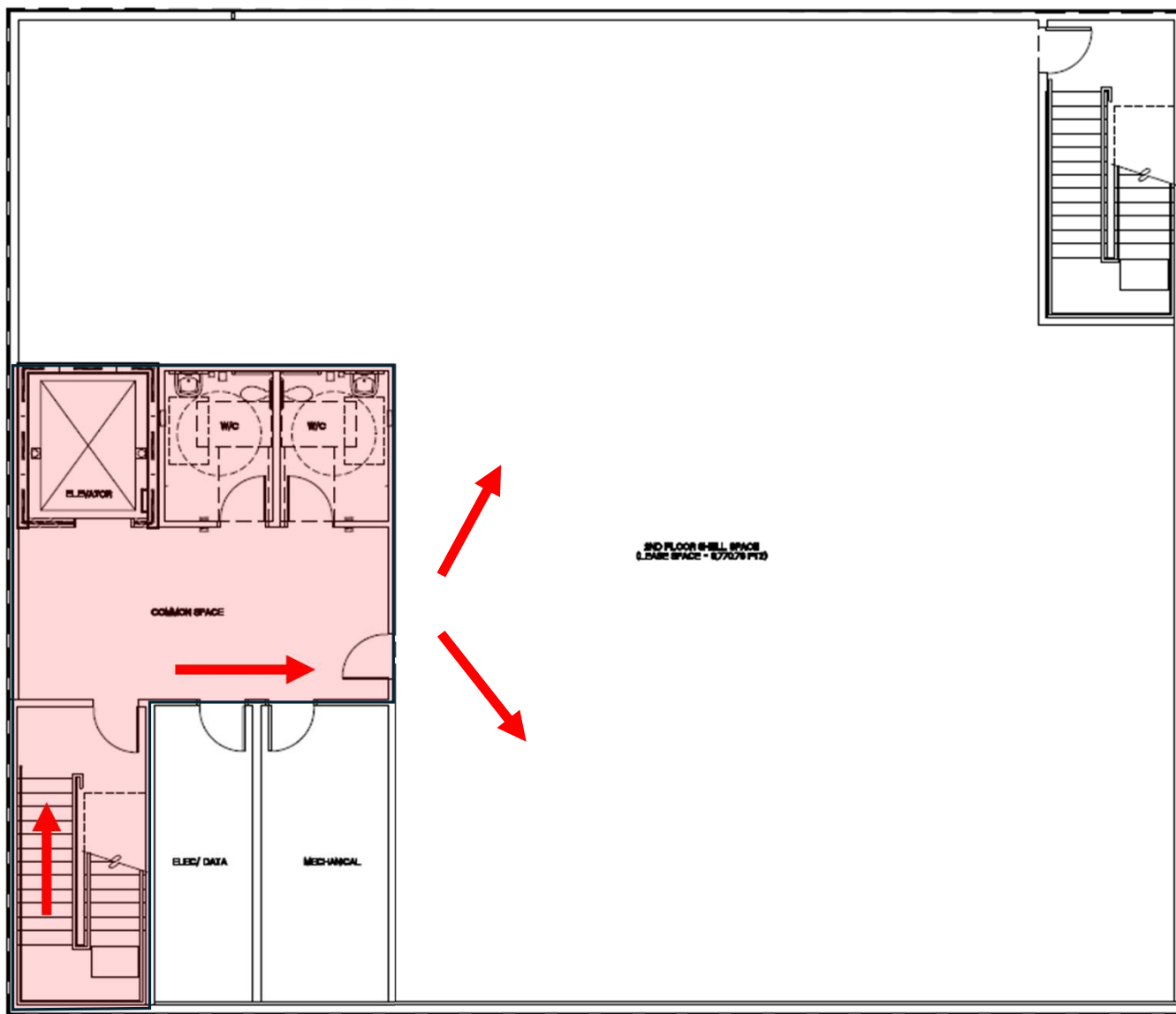
Expansion Area



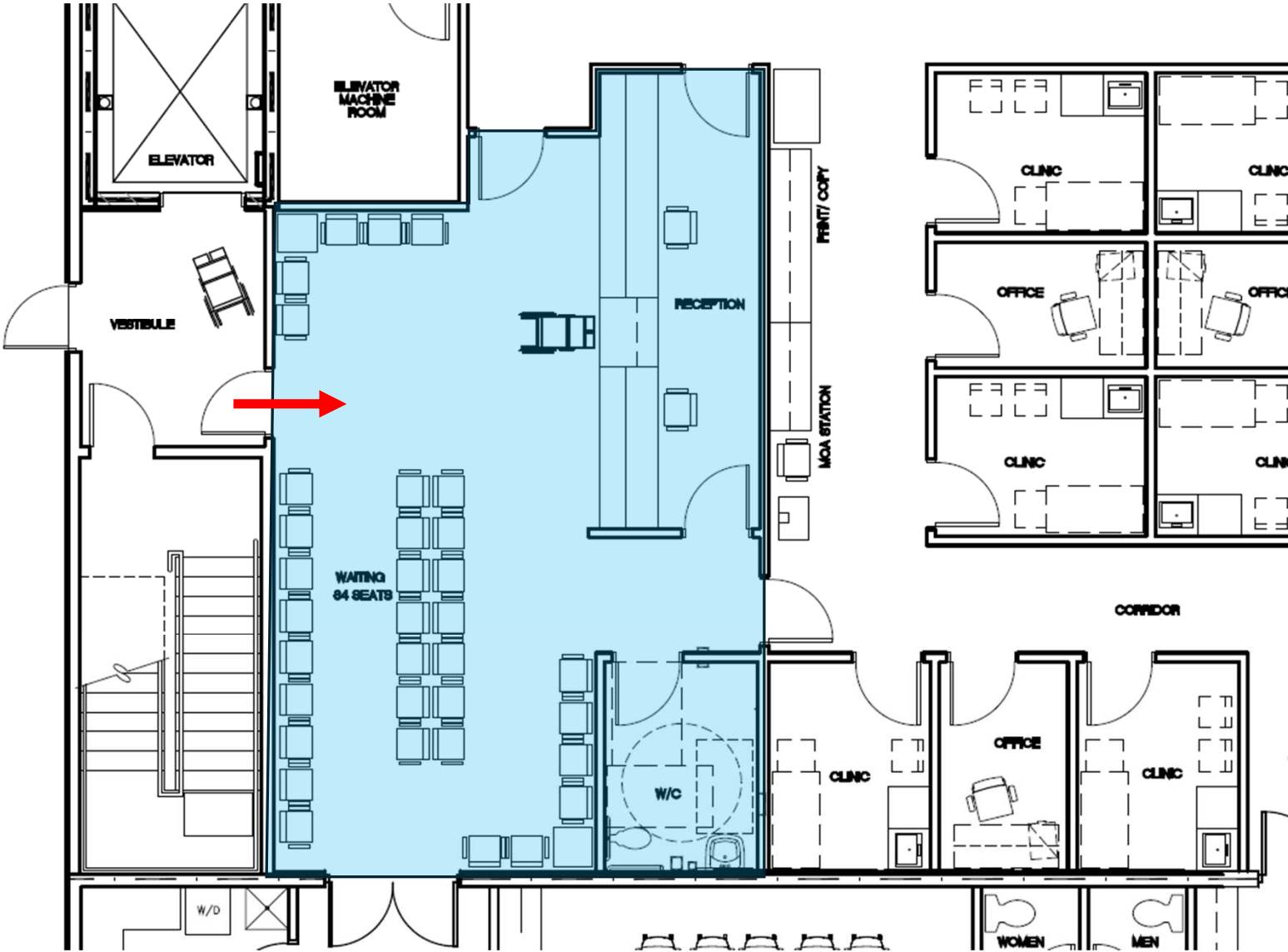
Renovated Space

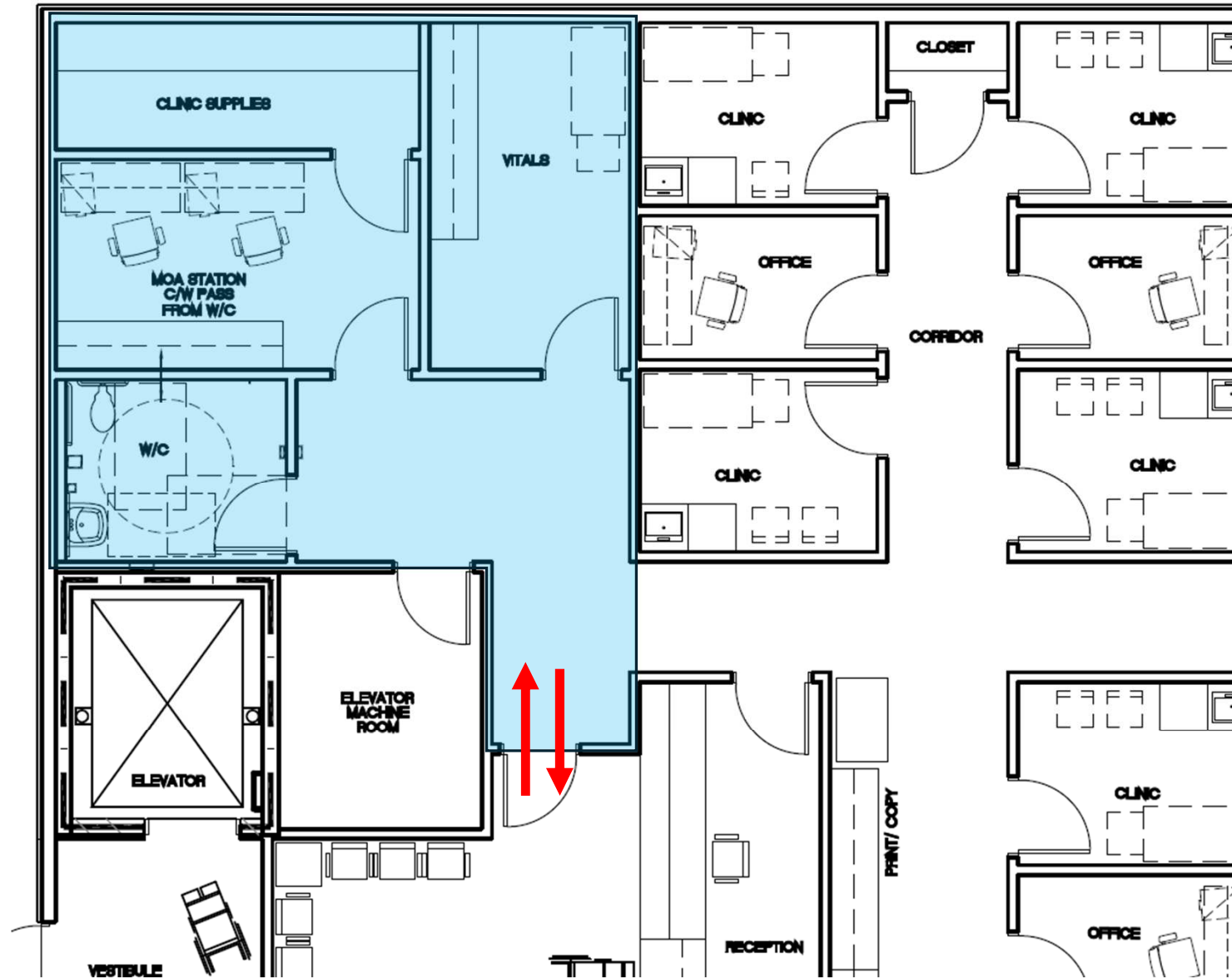
New Main
Entrance

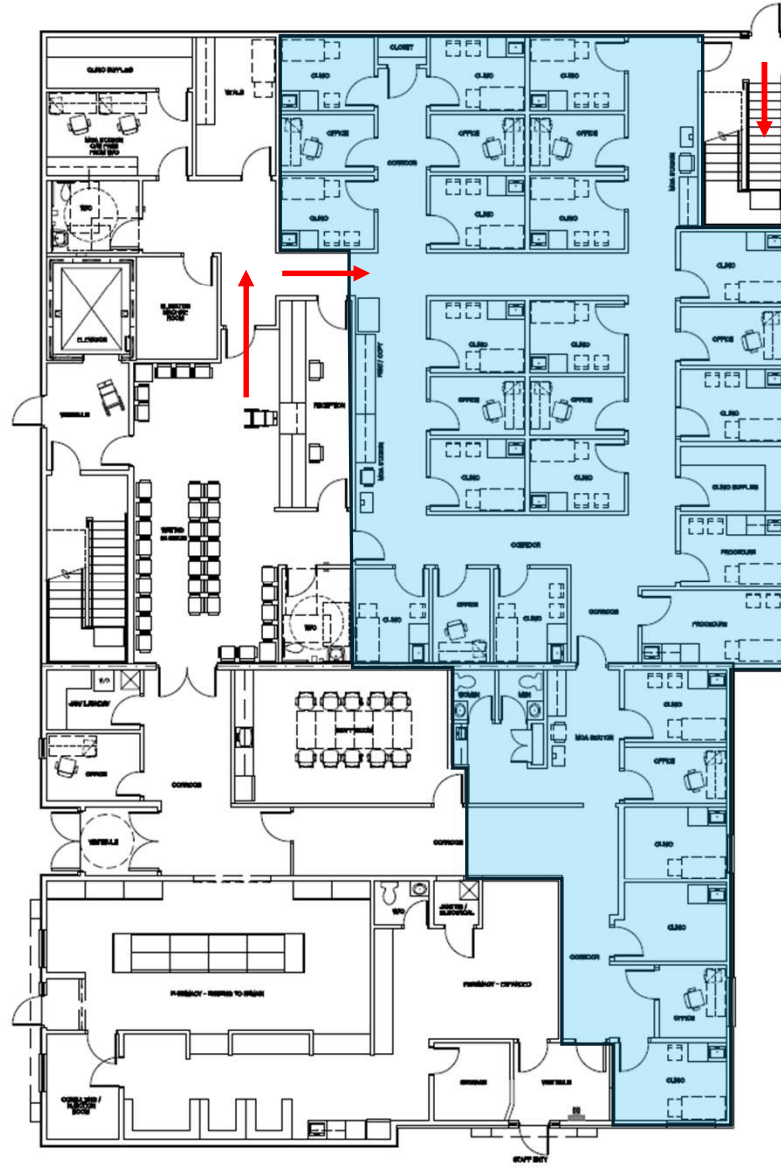




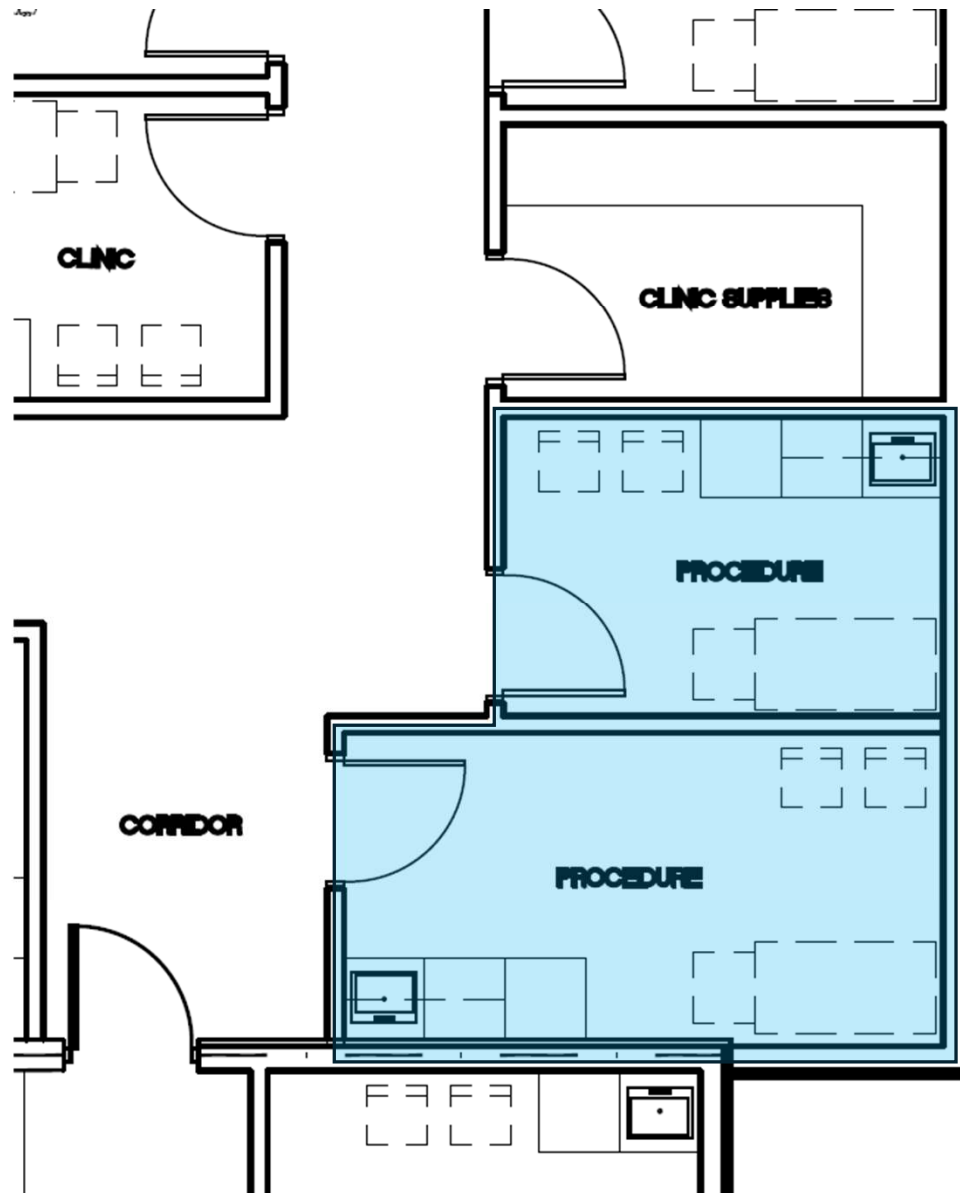
New
Main
Entrance



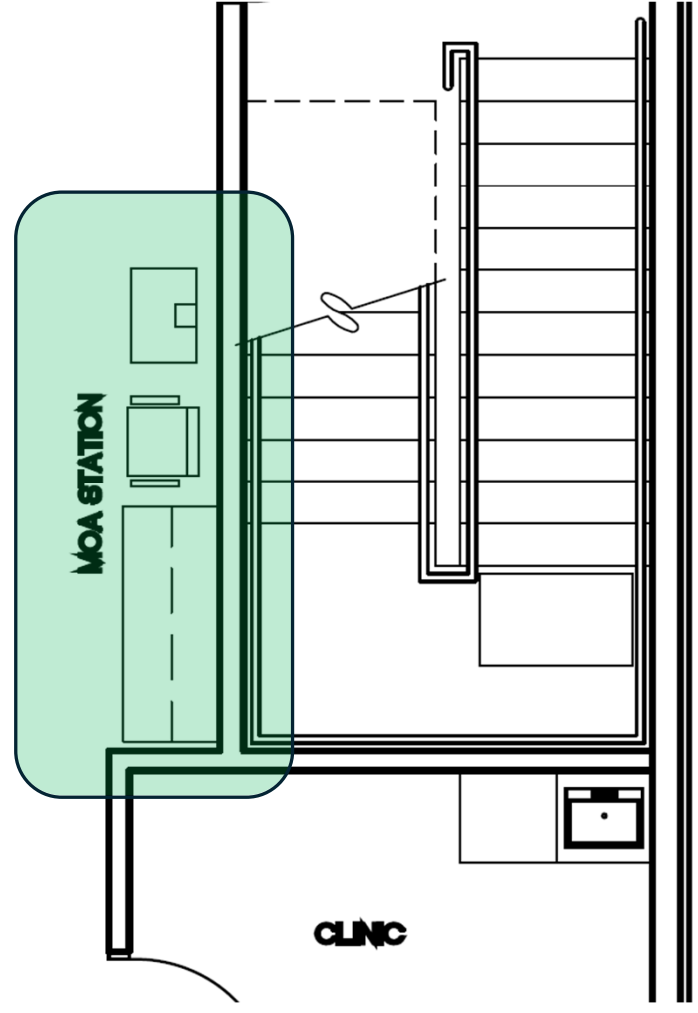
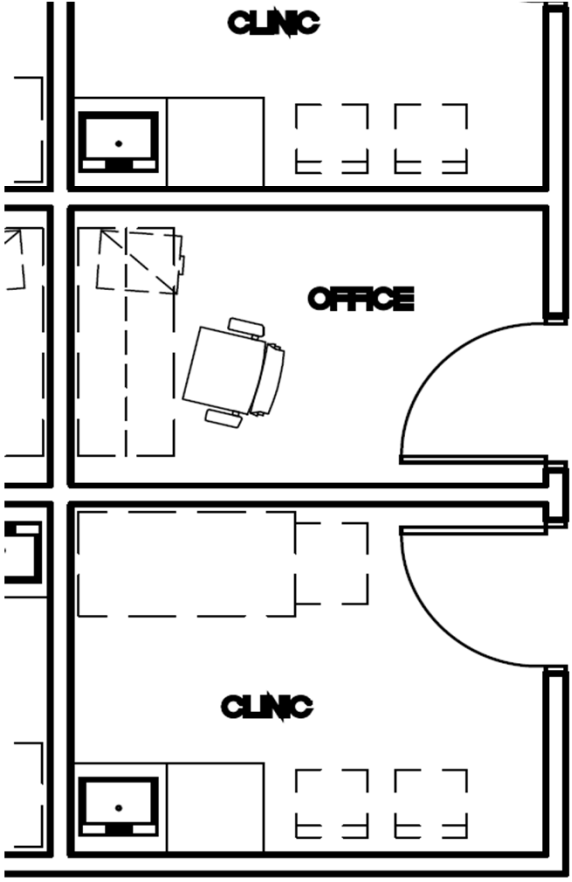


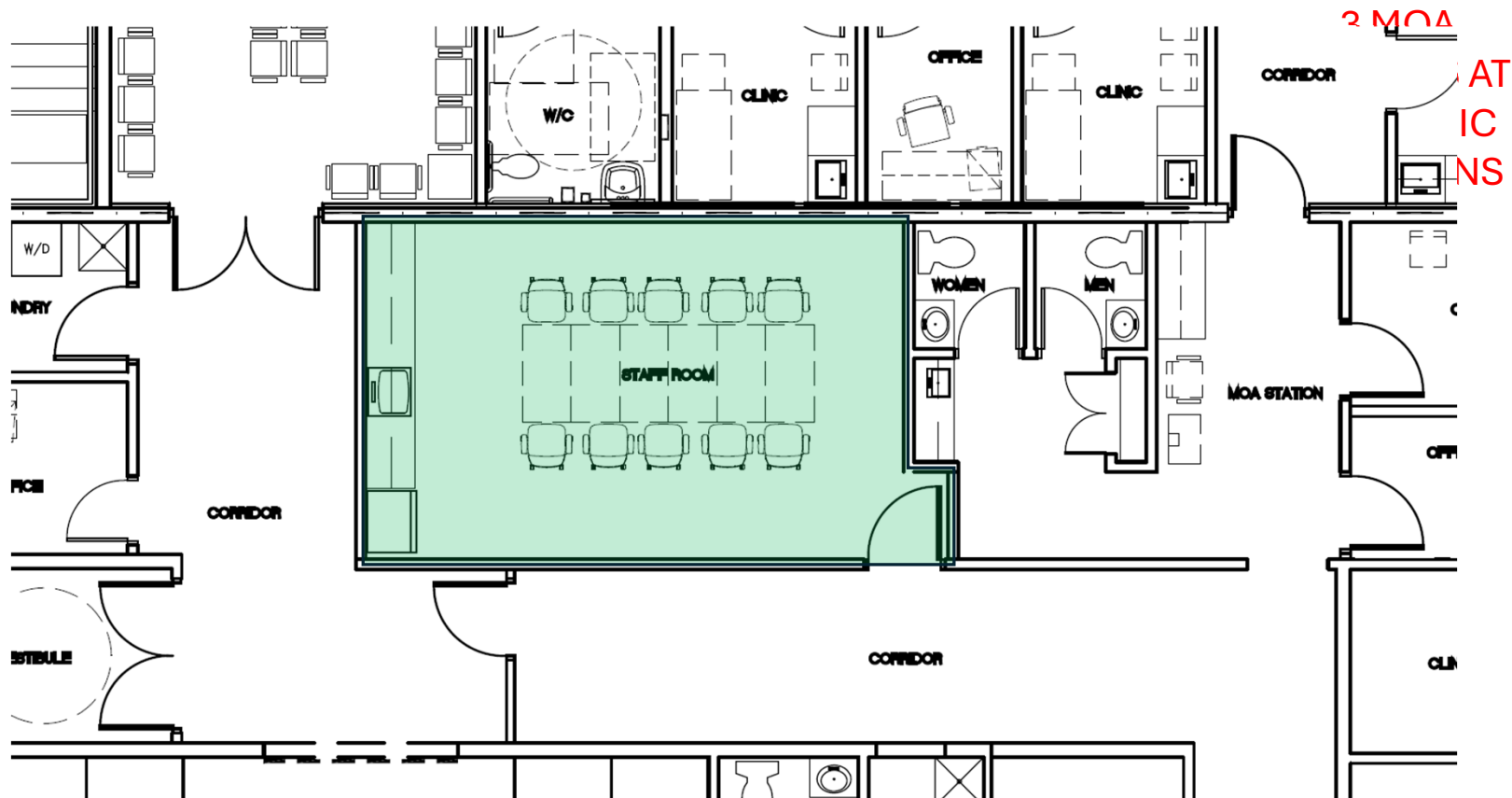


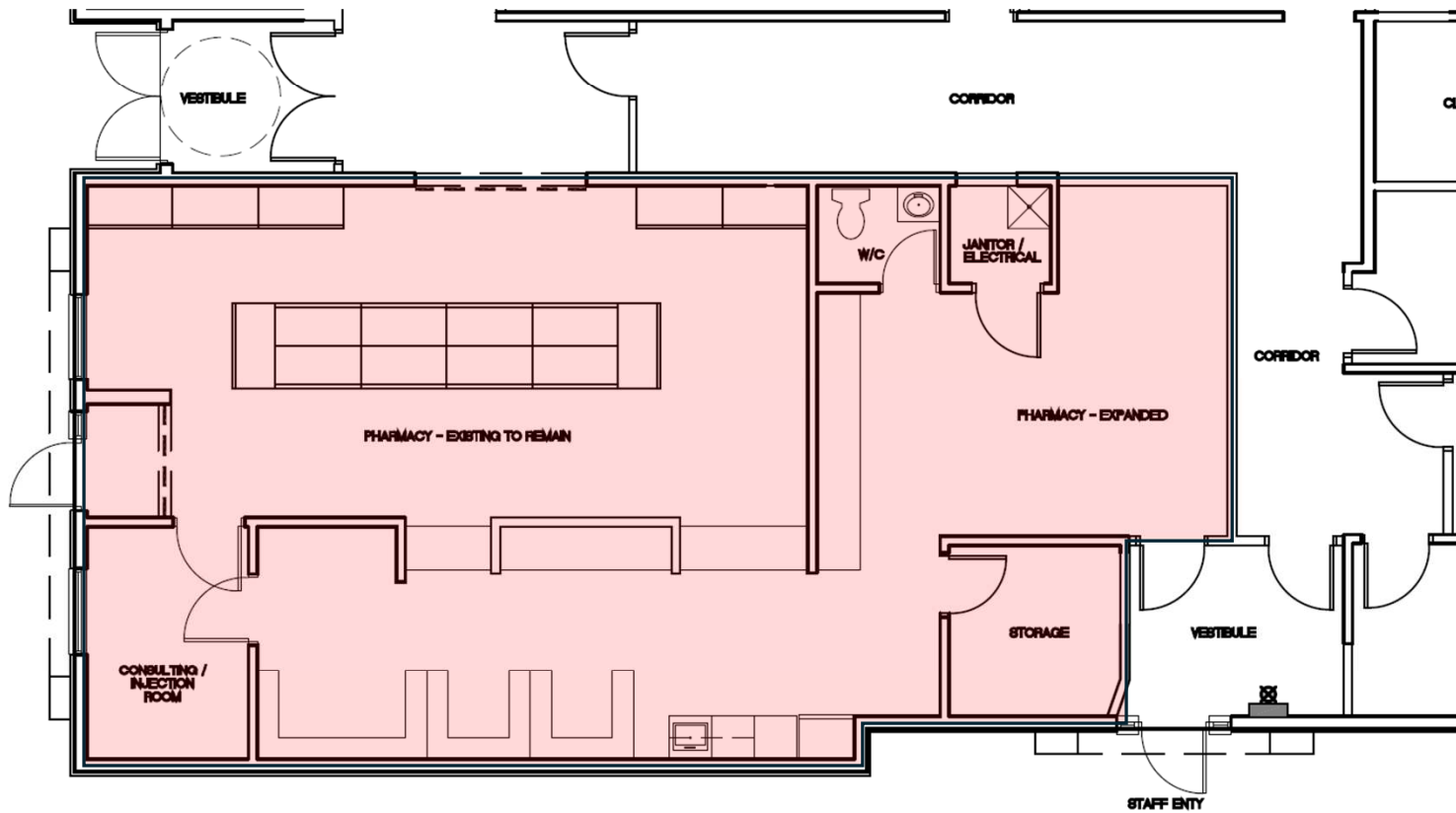


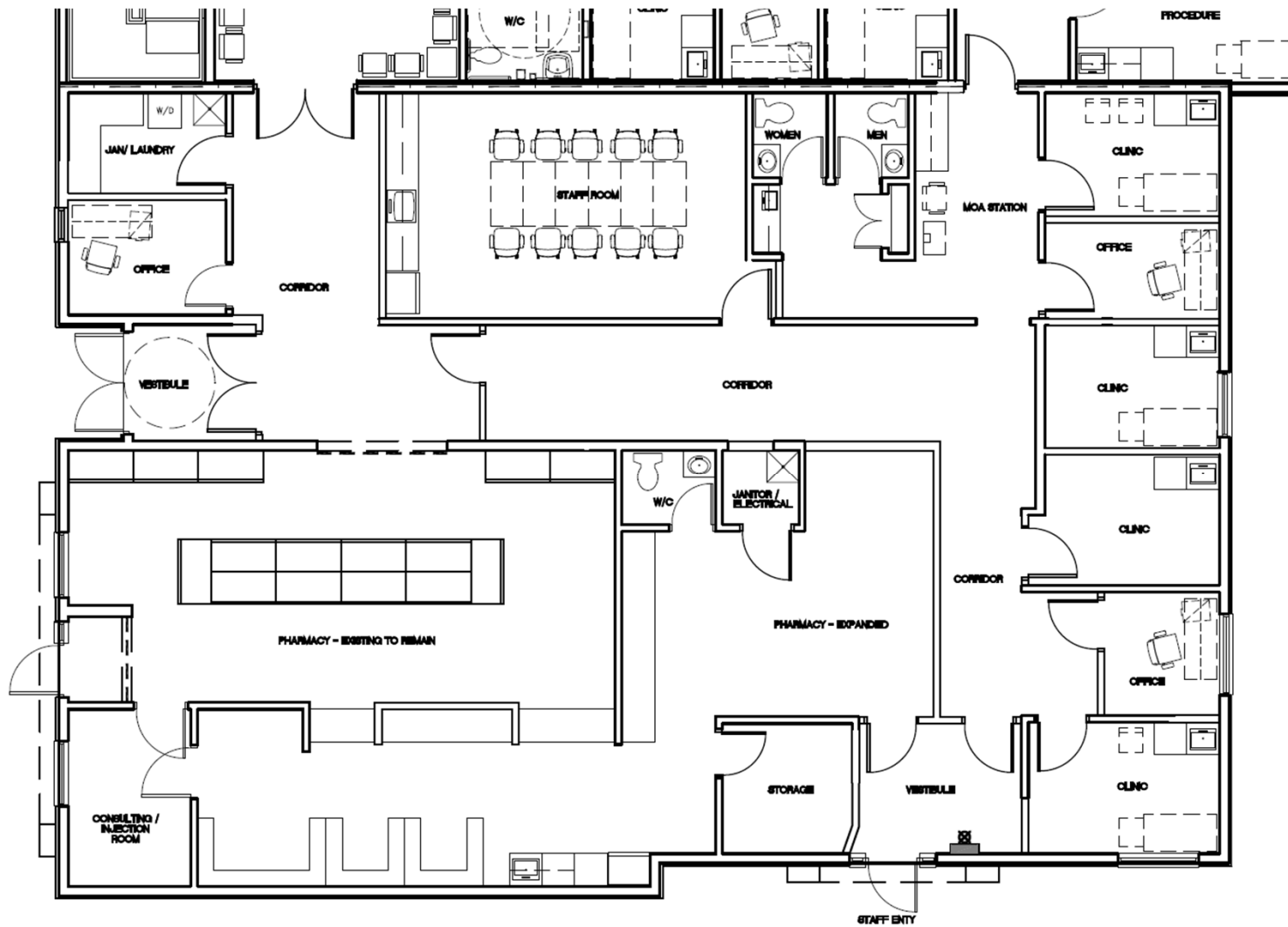






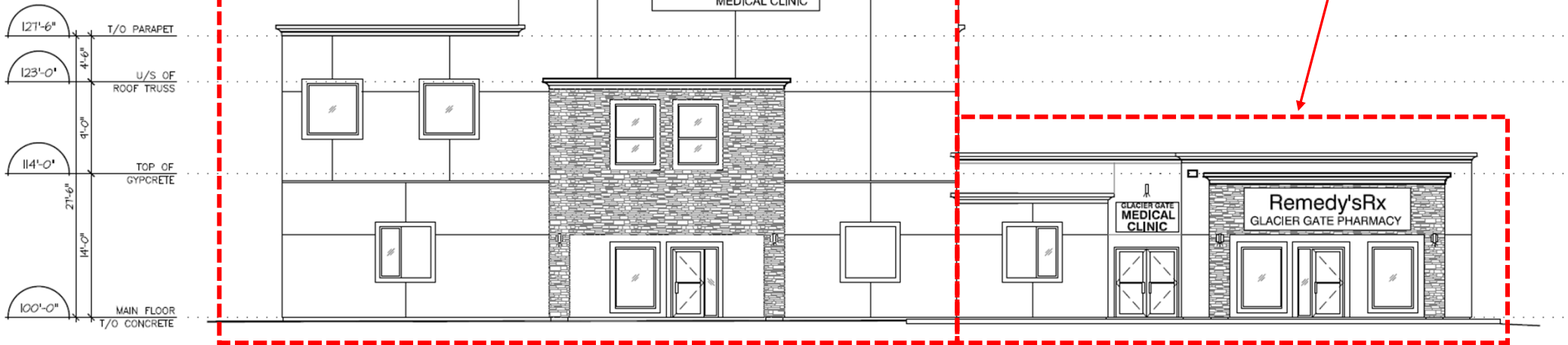


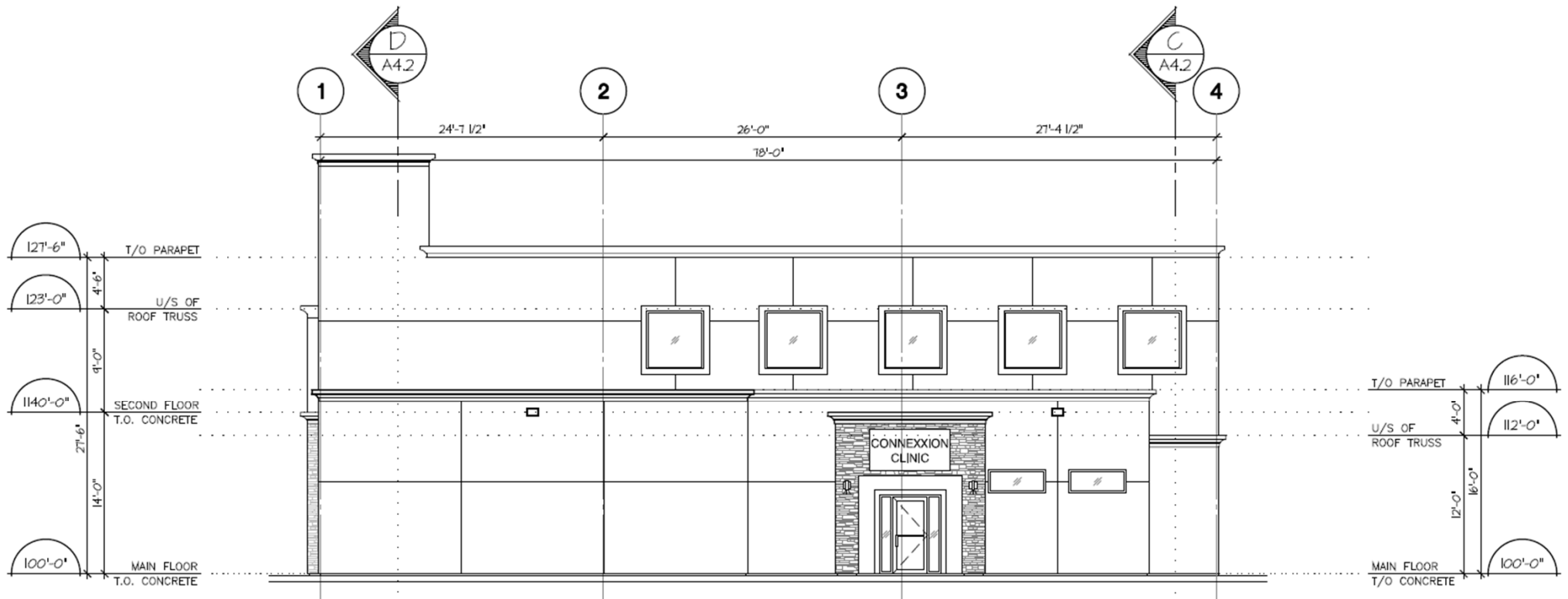


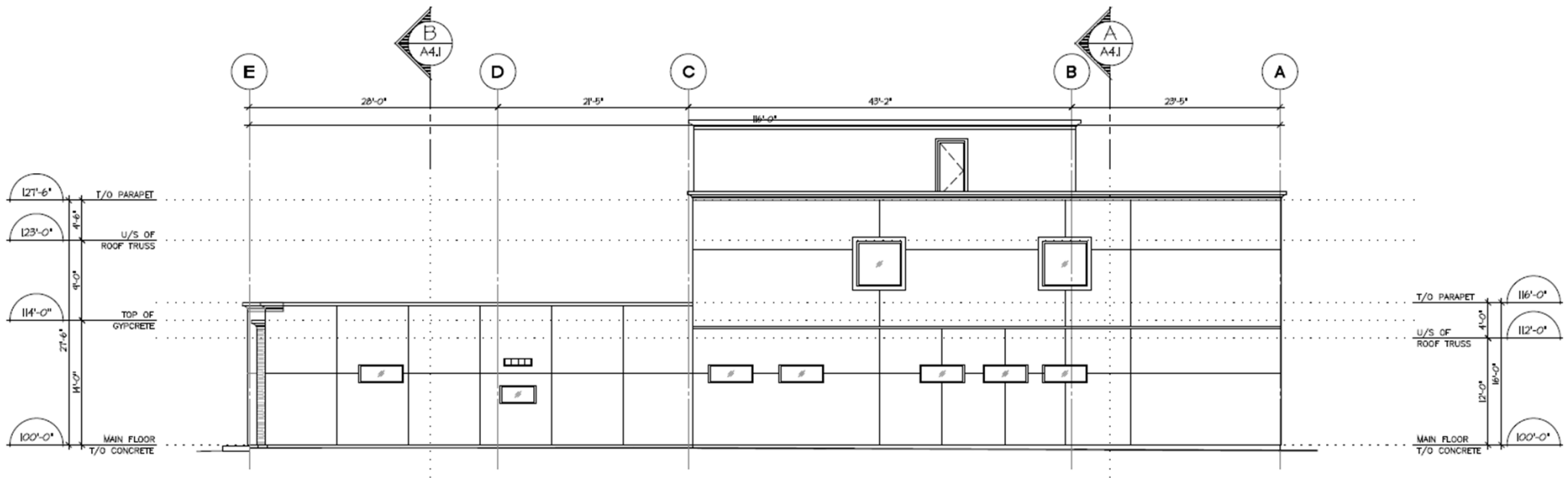


Expansion Area

Renovation Area







COLD LAKE PRIMARY CARE MEDICAL CLINIC LTD.

OPINION OF PROBABLE COSTS

PHASE 1

EXPANSION AREA = $5,000 \text{ ft}^2 @ \$400/\text{ft}^2 = \$2,000,000$

SECOND FLOOR SHELL SPACE INVESTMENT = $5,000 \text{ ft}^2 @ \$280/\text{ft}^2 = \$1,400,000$

TOTAL INVESTMENT – \$3,400,000+

PHASE 2

EXISTING CLINIC RENOVATION – $2,400 \text{ ft}^2 @ \$250/\text{ft}^2 = \$600,000$

PHASE 3

SECOND FLOOR FINISHING OPTION – $5,000 \text{ ft}^2 @ \$250/\text{ft}^2 = \$1,250,000$

TOTAL INVESTMENT – =/- \$5.25 MILLION